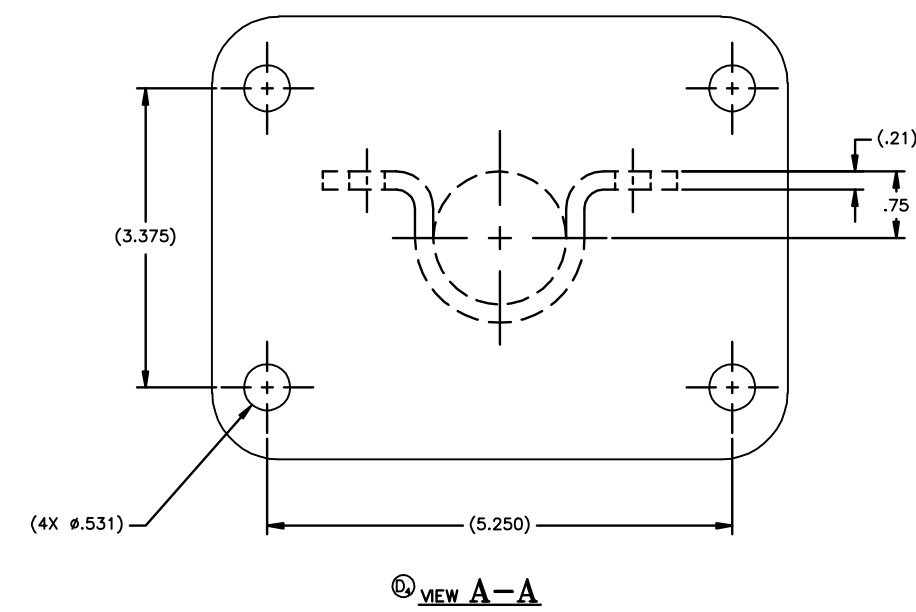
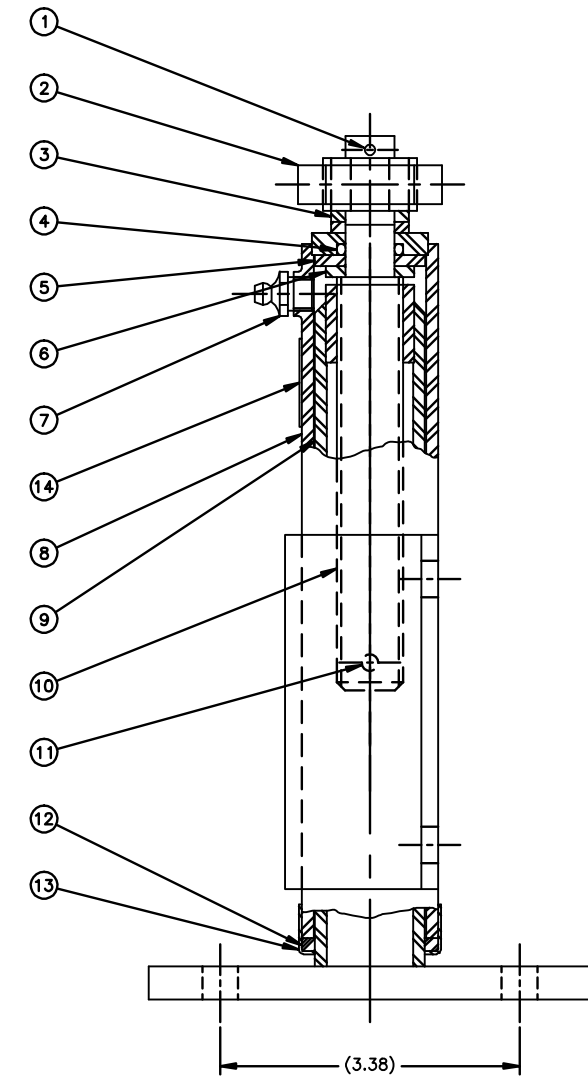
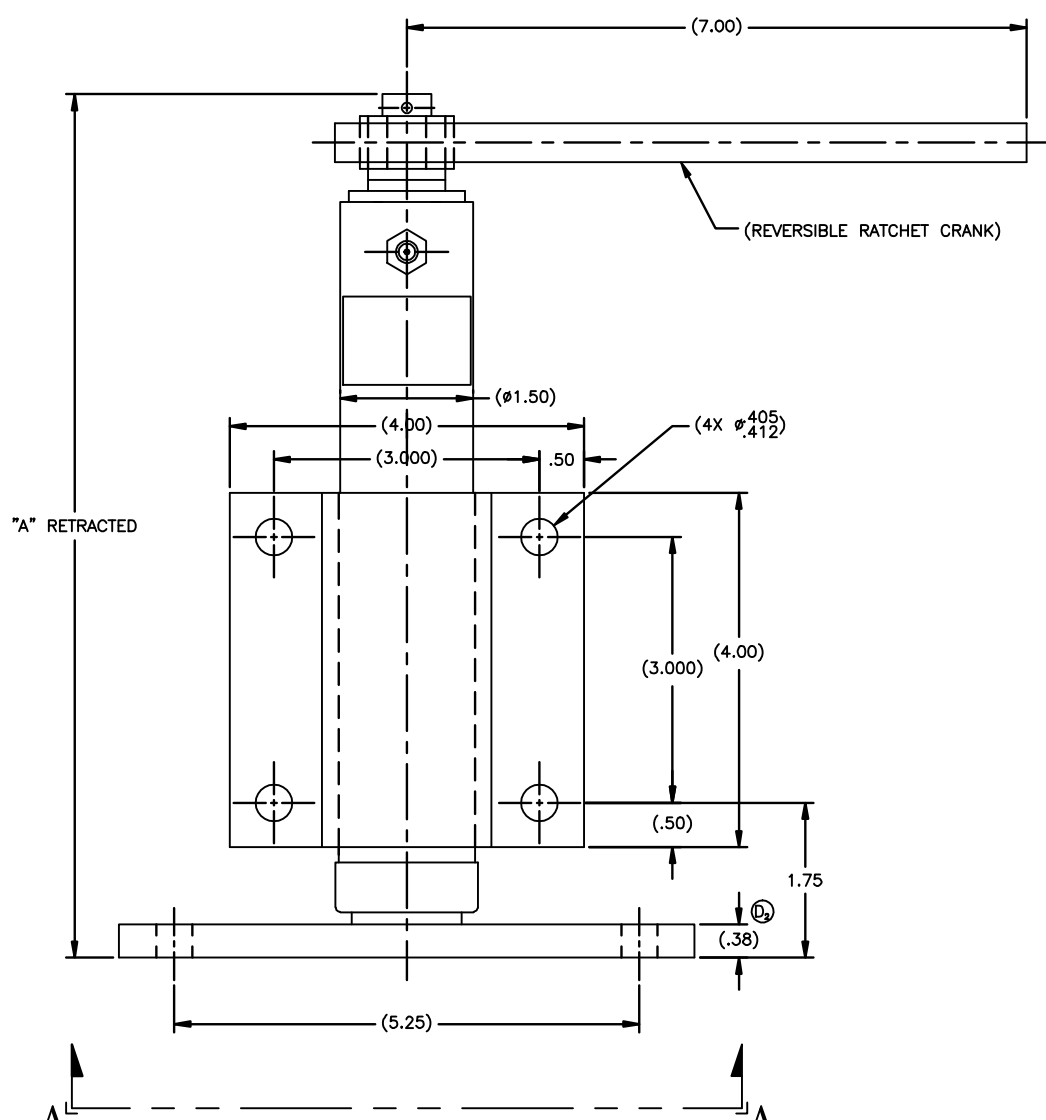


PART NO.	STROKE	"A" RETRACTED	OUTER TUBE ITEM # (F2)	INNER TUBE ITEM # (F3)	ACME SCREW ITEM 10 (F4)	SIDE LOAD	WEIGHT
07-031068-3	3	9 3/4	C-31061-1	07-053843-1	B-13825-2	700	5
07-031068-6	6	12 3/4	C-31061-2	07-053843-2	B-13825-3	550	7
07-031068-9	9	15 3/4	C-31061-3	07-053843-3	B-13825-4	350	9
07-031068-18	18	24 3/4	C-31061-7	07-053843-4	B-13825-9	250	14
07-031068-12	12	18 3/4	C-31061-4	07-053843-5	B-13825-10	300	11

SYM	REVISIONS	DATE	BY	APP.
D	D ₁ REVISED & REDRAWN ONTO AUTOCAD; D ₂ WAS (.50); D ₃ ADDED P/N 07-031068-18; D ₄ ADDED VIEW A-A.	01/07/04	KLK	MRS
E	QTY WAS 1.	02/09/04	KLK	MRS
F	F ₁ ADDED -12; (ENG UPDATE); F ₂ WAS 6; F ₃ WAS 7; F ₄ WAS 8; (F ₂ , F ₃ , F ₄ : ENG ERROR)	4/19/04	DJH	
G	G ₁ UPDATED NOTES; G ₂ ADDED JACK DATA	8/15/06	RWN	MRS
H	CORRECTED JACK DATA	12/1/06	RWN	MRS



- NOTES:
1. FINISH:
- 1.1 PRIMER: 1-COAT PER TT-P-636 (RED OXIDE), UNLESS OTHERWISE SPECIFIED ON SALES ORDER.
 - 1.2 FINISH PER SALES ORDER.
 - 1.3 PRIMER AND PAINT UNIT IN RETRACTED POSITION.
2. GREASE PER CIGNYS LUBE SPEC DOC 413-23. PACK BEARINGS, AND COAT SCREW & NUT. SPRAY CONTACT PORTION OF INNER TUBE WITH LUBRIBOND 220 PRIOR TO ASSY.
3. PLATING: ALL EXTERIOR HARDWARE ITEMS ZINC PLATE PER ASTM B-633-85, CLASS FE/ZN (.0002 THK.) TYPE III (CLEAR)
4. SEE D-34752 FOR JACK ASSEMBLY WITH NO RATCHET CRANK.

- (H)(G) JACK DATA:
- 1. 6 REVS. INPUT FOR 1 INCH OF STROKE
 - 2. 1,500 LB MAXIMUM STATIC COMPRESSION TO YIELD
 - 3. APPROX. 240 INCH LB. TORQUE INPUT AT MAXIMUM OPERATING LOAD

ITEM NO.	PART NO.	QTY.	DESCRIPTION	MATERIAL OR NOTE	CODE IDENT	SPECIFICATION
14	14468	1	NAMEPLATE	-	-	-
13	07-038414	1	CAP. SEAL	-	-	-
12	TS 33-218	1	RING, SQ. SECTION	1-1/4 I.D. X 1-1/2 O.D. X 1/8 THK.	91265	218 O-RING
11	LL 3/16 X 3/4	1	GROOVE PIN	Ø3/16 X 3/4 LG.	-	-
10	SEE CHART	1	SCREW, ACME	3/4-6 THD	-	-
9	SEE CHART	1	INNER TUBE WELDMENT	-	-	-
8	SEE CHART	1	OUTER TUBE WELDMENT	-	-	-
7	1641-B	1	FITTING, LUBE	1/4-28 UNF THD	-	-
6	07-037517	1	WASHER, THRUST	-	-	-
5	07-037518	1	BEARING, THRUST	-	-	-
4	MI-568-113	1	O-RING	.549 I.D. X .652 O.D.	-	-
3	13823	2	WASHER	-	-	-
2	UX 11	1	WRENCH, REVERSIBLE RATCHET	(LOWELL #101)	37078	-
1	LL 1/8 X 3/4 GP	1	GROOVE PIN	Ø1/8 X 3/4 LG.	-	-

MATERIAL: SEE DETAILS

FINISH: SEE NOTES

DRAWN BY: R. KAISER

CHECKED BY: GMS

DATE DRAWN: 2-13-73

CUSTOMER: -

CIGNYS LEVELING JACKS

LEVELING JACK - CASTER
500 LB. OPERATING

FILE NAME: 31068.DWG

CODE IDENT NO. 52793 D 07-031068

SCALE FULL DO NOT SCALE DRAWING SHEET 1 OF 1

THIS DRAWING AND THE SUBJECT MATTER ILLUSTRATED IS THE PROPERTY OF CIGNYS. THE DRAWING IS NOT TO BE COPIED IN PART OR WHOLE, DUPLICATED, REPRODUCED, USED BY PARTIES OTHER THAN CIGNYS TO MANUFACTURE THE SUBJECT MATTER ILLUSTRATED, OR SUBMITTED TO OTHER PARTIES WITHOUT THE EXPRESS WRITTEN AUTHORIZATION OF CIGNYS.

DIMENSIONS ARE IN INCHES UNLESS OTHERWISE SPECIFIED		
TOLERANCES UNLESS OTHERWISE SPECIFIED		
FRACTION	DECIMALS	ANGULAR
± 1/16	± .005	± .5°
	± .002	± .25°
	± .001	± .1°

07-031068

REFERENCE DWG: -