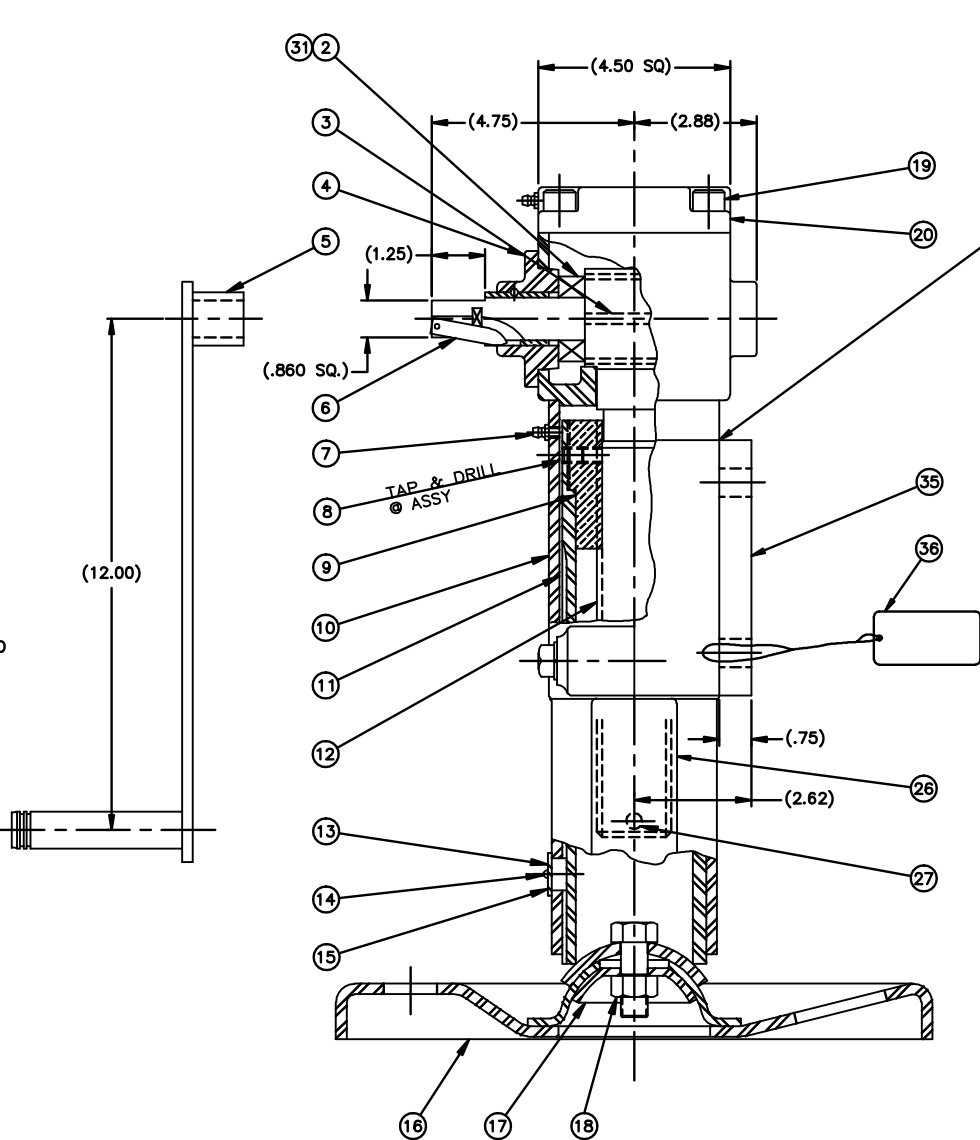
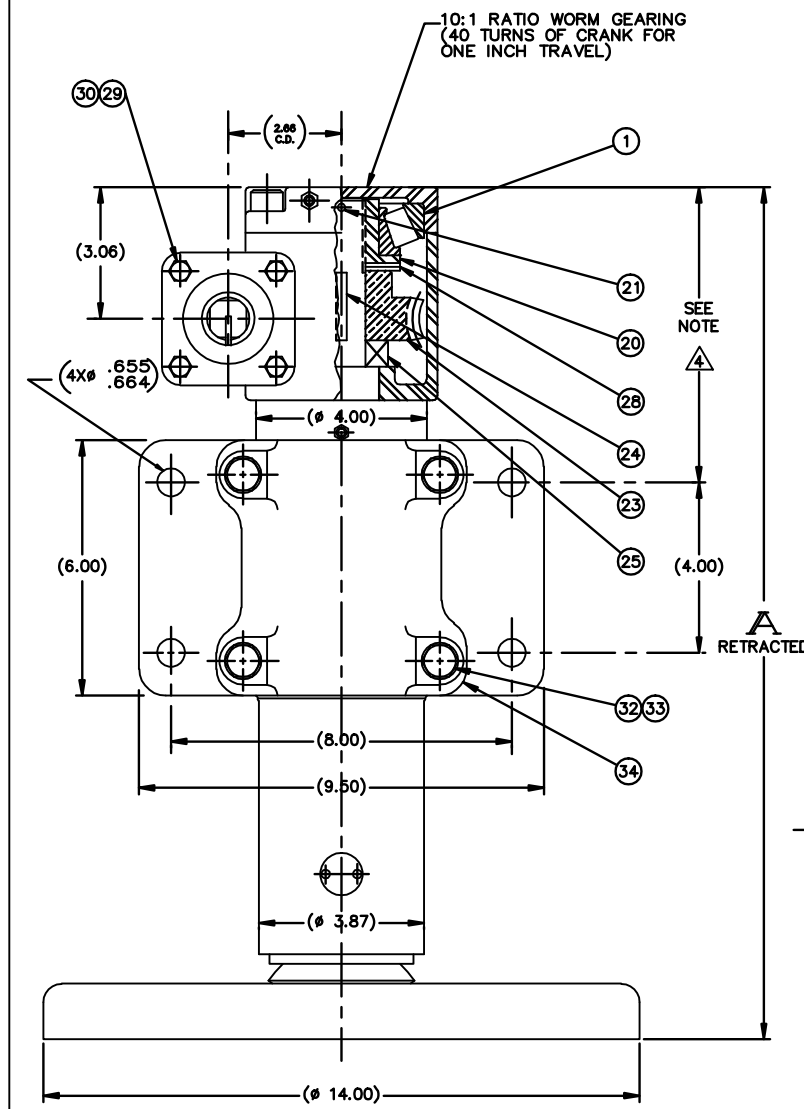


PART NO.	STROKE	RETRACTED	OUTER TUBE ITEM 10	INNER TUBE ITEM 11	SCREW ITEM 12	SIDE LOAD	EST WT
D-07-043650-6	6	20	D-07-043626-1	D-07-043911-1	C-07-043690-1	4500	92
D-07-043650-12	12	26	D-07-043626-2	D-07-043911-2	C-07-043690-2	2900	104
D-07-043650-18	18	32	D-07-043626-3	D-07-043911-3	C-07-043690-3	1800	116
D-07-043650-36	36	50	D-07-043626-6	D-07-043911-4	C-07-043690-5	360	152

REV.	DESCRIPTION	DATE	BY	APP
E	REDRAWN/REVISED & PUT ON AUTOCAD	10/8/97	CRG	RCW
F	ADDED PART No. D-07-043650-36	6/23/03	CRG	RCW
G	G WAS DOD-P-16232-B. G WAS COM1: (ENG UPDATE)	5/16/05	DJH	MRS
H	H <sub>1</sub> REVISED NOTES; H <sub>2</sub> ADDED JACK DATA	8/15/06	RWN	MRS



1/4"  $\nabla$  4 WELDS 1 1/4" LG OFF CENTER-LINE AT 45° (BY CUSTOMER)

ITEM #	PART NUMBER	QTY	DESCRIPTION	MATERIAL OR NOTE	SPECIFICATION
36	38290	1	TAG, WARNING	(WIRE TO BRACKET HOLE)	
35	31014	1	BRACKET CLAMP		
34	14235-1	1	CAP		
33	1/2-13 X 2-3/4 GR8	4	SCREW, CAP, HEX. HD.	1/2-13 X 2 3/4 LG	GRADE 8 HEAT TREATED
32	GG 1/2 ML	4	LOCKWASHER		1/2 MED.
31	30193-3	2	WASHER, SHIM		USE AS REQD
30	GG 5/16 ML	4	LOCKWASHER		5/16 MED.
29	5/16-18 X 7/8	4	SCREW, CAP, HEX. HD.	5/16-18 X 7/8 LG	
28	13153-5	AS REQD	SHIM PACK		
27	LL 3/8 X 1 3/4 GP	1	GROOVE PIN	3/8 DIA. X 1 3/4" LG	TYPE 3
26	14468	1	NAMEPLATE		
25	T-113	1	THRUST BEARING		TIMKEN OR EQ
24	KEY 1/4 X 1-1/2	1	KEY	1/4 SQ X 1-1/2 LG	
23	19395-10	1	WORM & GEAR SET		10:1 RATIO RH
22	18735	1	LOCKNUT		
21	LL 3/16 X 1 3/4 GP	1	GROOVE PIN	3/16 DIA. X 1 3/4" LG	TYPE 3
20	10725	1	CAP ASSY		
19	1/2-13 X 1-1/4	4	SCREW, CAP, SOC. HD.	1/2-13 X 1 1/4 LG.	
18	34050	1	LOCK NUT, REG. HEX.	5/8-18 UNF	
17	07-009836	1	PAD, INNER FOOT		
16	9779	1	FLOAT ASSY		
15	14460	1	KEY COVER PLATE		
14	#6-32 X 3/16 PH	2	SCREW, MACH, PAN. HD.	#6-32 X 3/16" LG	
13	31015	1	KEY		
12	SEE CHART	1	SCREW, ACME	1 3/4-4 ACME	
11	SEE CHART	1	INNER TUBE ASSY		
10	SEE CHART	1	OUTER TUBE ASSY		
9	43909	1	ACME NUT	1 3/4-4 ACME	
8	3/8-16 X 1/2 HSSS	1	SOCKET HEAD SET SCREW	3/8-16 X 1/2 LG	
7	1792-B	1	FITTING, LUBE	(1/4-28 THD)	ALEMITE
6	37064	1	SHAFT ASSY		
5	10582-M	1	CRANK HANDLE 12"		
4	33668	1	WORM SHAFT CAP ASSY		
3	13060	1	WORM KEY		
2	T-101	2	THRUST BEARING		TIMKEN OR EQ
1	53177	1	CONE, BEARING		TIMKEN OR EQ.

**AGNYS** Multifaceted & Multifunctional Manufacturing [www.cignys.com](http://www.cignys.com)

DESCRIPTION: LEVELING JACK RIGID MOUNT 20,000 LB. OPERATING COMPRESSION

DATE DRAWN: 7/31/80

CODE IDENT NO. 52793

PART NUMBER / FILE NAME: 43650

SCALE: 1/2" = 1"

DO NOT SCALE DRAWING

SHEET: 1 of 1

REFERENCE: 43671 / 44703 / 43651 / 43650

- NOTES:
- 1. FINISH:
    - 1.1 PRIMER: 1-COAT PER TT-P-636 (RED OXIDE), UNLESS OTHERWISE SPECIFIED ON SALES ORDER.
    - 1.2 FINISH PER SALES ORDER.
    - 1.3 PRIMER AND PAINT UNIT IN RETRACTED POSITION.
  - 2. GREASE PER CIGNYS LUBE SPEC DOC 413-23. PACK BEARINGS, AND COAT SCREW & NUT. SPRAY CONTACT PORTION OF INNER TUBE WITH LUBRIBOND 220 PRIOR TO ASSY.
  - 3. PLATING: ALL EXTERIOR HARDWARE ITEMS ZINC PLATE PER ASTM B-633-85, CLASS FE/ZN (.0002 THK.) TYPE III (CLEAR)
  - 4. ADJUSTABLE CLAMP BRACKET MAY BE ADJUSTED ALONG ENTIRE LENGTH OF TUBE TOWARD GEAR HEAD ON -12 AND -18 MODELS.

- JACK DATA:
- 1. 40 REVS. INPUT FOR 1 INCH OF STROKE
  - 2. 35,000 LB MAXIMUM STATIC COMPRESSION TO YIELD
  - 3. APPROX. 330 INCH LB. TORQUE INPUT AT MAXIMUM OPERATING LOAD

FRACTION	DECIMALS	ANGULAR	FRACTION	DECIMALS	ANGULAR
1/16	.0625	± .01	1/8	.125	± .01
1/8	.125	± .01	3/16	.1875	± .01
3/16	.1875	± .01	1/4	.25	± .01
1/4	.25	± .01	5/16	.3125	± .01
5/16	.3125	± .01	3/8	.375	± .01
3/8	.375	± .01	7/16	.4375	± .01
7/16	.4375	± .01	1/2	.5	± .01
1/2	.5	± .01	9/16	.5625	± .01
9/16	.5625	± .01	5/8	.625	± .01
5/8	.625	± .01	11/16	.6875	± .01
11/16	.6875	± .01	3/4	.75	± .01
3/4	.75	± .01	7/8	.875	± .01
7/8	.875	± .01	1	1.0	± .01

43650