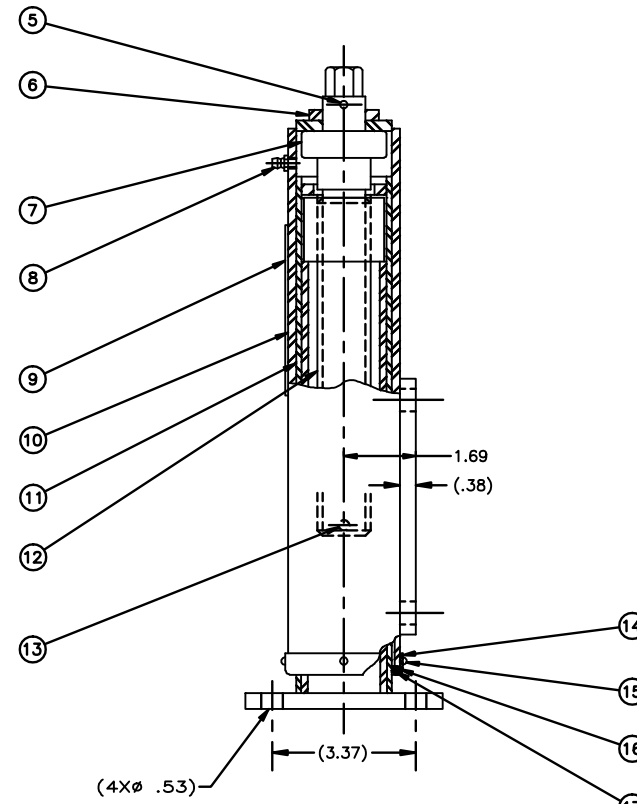
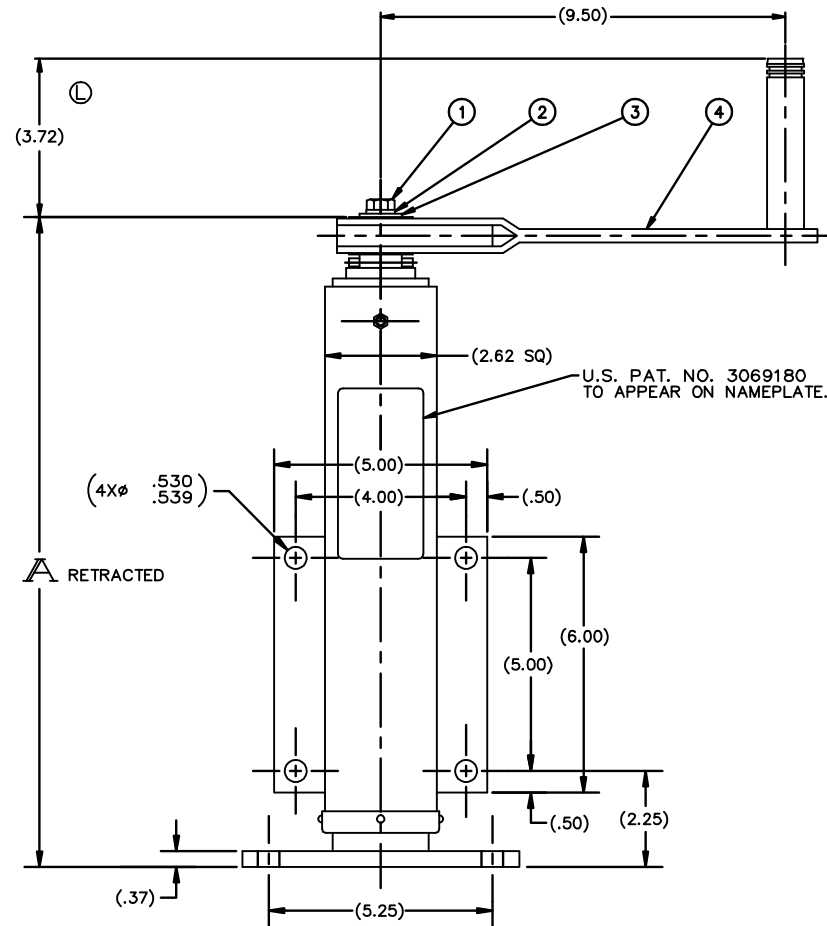


PART NO.	STROKE	RETRACTED	OUTER TUBE ITEM 10	INNER TUBE ITEM 11	SCREW ITEM 12	SIDE LOAD	WT.
31058-3	3	12	C-07-031052-16	C-07-042377-1	C-07-017486-15A	725	11
31058-6	6	15	C-07-031052-17	C-07-042377-2	C-07-017486-5A	600	18
31058-12	12	21	C-07-031052-18	C-07-042377-3	C-07-017486-6A	450	25.5
31058-18	18	27	C-07-031052-19	C-07-042377-4	C-07-017486-7	350	33
31058-24	24	33	C-07-031052-20	C-07-042377-9	C-07-017486-18		41

REV.	DESCRIPTION	DATE	BY	APP
K	REDRAWN, PUT ON AUTOCAD; (ENG UPDATE)	2/10/96	DJH	RCW
L	PICTORIAL & DIMENSION UPDATE	2/7/03	KLK	RCW
M	M ₁ C-07-017486-15A WAS C-07-017486-15; M ₂ C-07-017486-5A WAS C-07-017486-5; M ₃ C-07-017486-6A WAS C-07-017486-6	5/14/03	KLK	RCW
N	N ₁ REMOVED CAD PLATE; N ₂ REMOVED TT-P-636, RED OXIDE; N ₃ REMOVED PHOS COAT, MIL-P-16232; (ENG UPDATE)	10/29/04	DJH	MRS
P	P ₁ ADDED LUBE 413-23; P ₂ WAS TYPE II, YELLOW; P ₃ ADDED I P ₄ ADDED NOTE; (ENG UPDATE)	12/5/05	DJH	MRS
Q	REMOVED MS NUMBERS	12/23/05	DJH	MRS
R	ADDED JACK DATA	8/14/06	RWN	MRS



ITEM #	PART NUMBER	QTY	DESCRIPTION	MATERIAL OR NOTE	SPECIFICATION
17	07-013398	2	RING, SPACER		
16	07-13397	1	SEAL, JACK		
15	6-32 X 3/16 PH	4	SCREW, MACH. PAN. HD.	#6-32NC X 3/16 LG	
14	07-013396	1	RETAINER, SEAL		
13	LL 1/4 X 1-1/4	1	PING, GROOVE	1/4 DIA. X 1 1/4 LG	
12	SEE CHART	1	SCREW, ACME	1 1/4-4 THD	
11	SEE CHART	1	INNER TUBE ASSY		
10	SEE CHART	1	OUTER TUBE ASSY		
9	07-014468	1	NAMEPLATE		
8	1641-B	1	FITTING, LUBE	(1/4-28 THD)	
7	T-101	1	BEARING, THRUST	TIMKEN OR EQ.	
6	07-014491	1	WASHER, THRUST		
5	LL 3/16 X 1/2	1	PIN, SPRING	3/16 DIA. X 1 1/2 LG	
4	07-042581-1	1	HANDLE, CRANK	OPT. C-31051	
3	GG 3/8 PL	1	WASHER, FLAT	3/8 MED.	
2	GG 3/8 ML	1	WASHER, LOCK	3/8 MED.	
1	3/8-24 X 3/4	1	SCREW, HEX. HD. CAP	3/8-24 X 3/4 LG	

MATERIAL: _____ FINISH: _____		DRAWN BY: R. KAISER CHECKED BY: DJH ENGINEERING APPROVAL: MRS DATE DRAWN: 2/13/73 CUSTOMER: _____		GEOMETRY CREATED IN AutoCAD AGNYS Multifaceted & Multifunctional Manufacturing www.agnys.com DESCRIPTION: LEVELING JACK-CASTER 1,800 LB. CAPACITY	
DIMENSIONS ARE IN INCHES UNLESS OTHERWISE SPECIFIED TOLERANCES UNLESS OTHERWISE SPECIFIED		CODE IDENT NO. 52793 SIZE D PART NUMBER / FILE NAME: 31058		SCALE: 1/2 DO NOT SCALE DRAWING SHEET: 1 of 1 REFERENCE: 43884, 44234, 44233, 44275	

- NOTES:
- (P₄) 1. FINISH; USE SPECIFICATIONS BELOW UNLESS OTHERWISE INDICATED ON SALES ORDER.
 - (P₃) 1.1. PHOS COAT PER TT-C-490. TYPE I OR III.
 - (M₂) 1.2. PRIMER: 1-COAT PER TT-P-636 (RED OXIDE).
 - (P₂) 1.3. ENAMEL: ONLY WHEN SPECIFIED ON ORDER
 - (P₄) 1.4. PRIME AND PAINT UNIT IN RETRACTED POSITION, THEN EXTEND UNIT AND SPRAY CONTACT PORTION OF INNER TUBE WITH LUBRIBOND 220.
 - (P₁) 2. LUBRICATION: GREASE PER CIGNYS LUBE SPEC. DOC. 413-23. PACK BEARINGS AND COAT SCREW & NUT.
 - (P₂) 3. PLATING: ALL EXTERIOR HARDWARE ITEMS ZINC PLATE PER ASTM B-633-B5-CLASS FE/ZN 5 (.0002 IN THICK), TYPE III (CLEAR).

- (R) JACK DATA:
- 4 REVS. INPUT FOR 1 INCH OF STROKE
 - 4,000 LB MAXIMUM STATIC COMPRESSION TO YIELD
 - APPROX. 240 INCH LB. TORQUE INPUT AT MAXIMUM OPERATING LOAD

D-07-041050-6# WHEEL	D-07-044199-6# WHEEL
D-07-042390-8# WHEEL	D-07-042690-3.50# PNEUMATIC
D-07-042791-10# WHEEL	D-07-042795-8# WHEEL
D-07-040797-8# WHEEL	D-07-043885-6# WHEEL
D-07-030649-6# WHEEL	D-07-044111-8# WHEEL
D-07-035015-6# WHEEL	D-07-042090-5# WHEEL

THIS DRAWING AND THE SUBJECT MATTER ILLUSTRATED IS THE PROPERTY OF CIGNYS. THIS DRAWING IS NOT TO BE COPIED IN PART OR WHOLLY, DUPLICATED, REPRODUCED, USED BY PARTIES OTHER THAN CIGNYS TO MANUFACTURE THE SUBJECT MATTER ILLUSTRATED, OR SUBMITTED TO OTHER PARTIES WITHOUT THE EXPRESS WRITTEN AUTHORIZATION OF CIGNYS.

31058