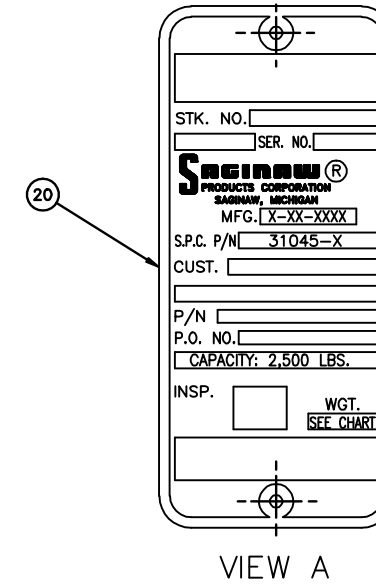
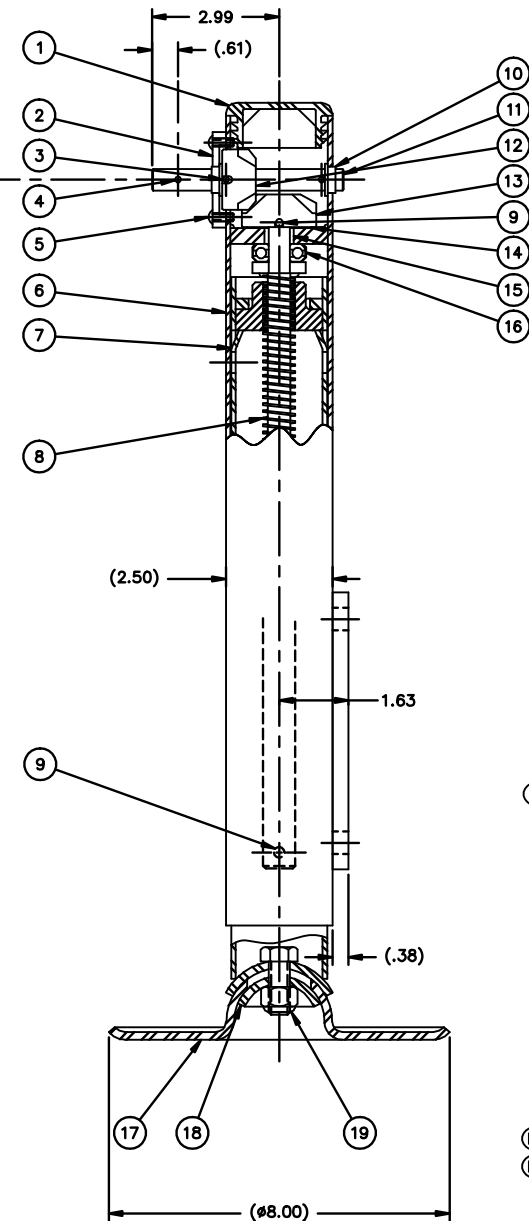
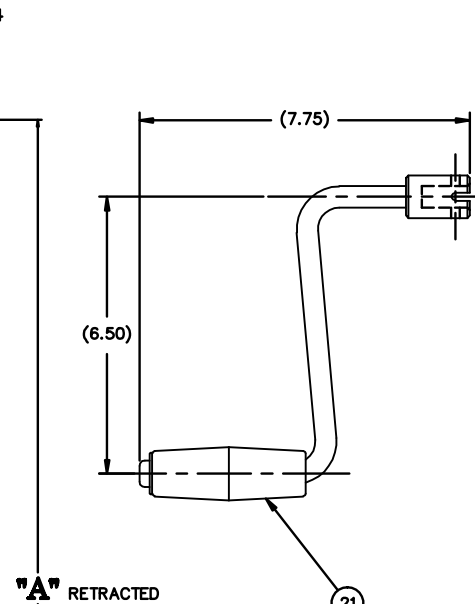
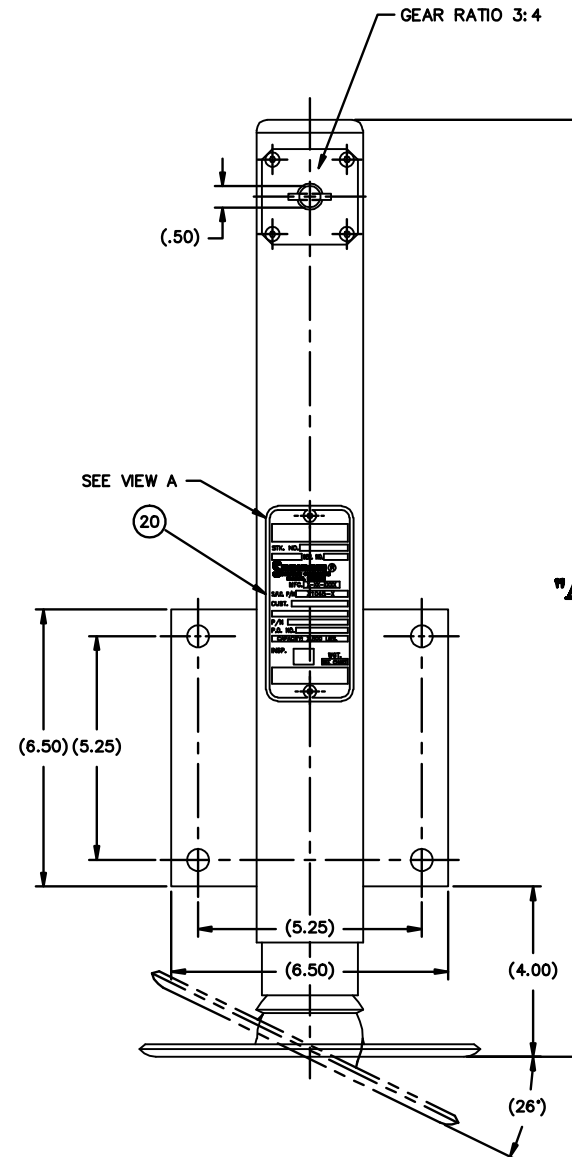


PART NO.	STROKE	"A" RETRACTED	OUTER TUBE ITEM 6	INNER TUBE ITEM 7	SCREW ITEM 8	SIDE LOAD	WT.
31045-3	3.00	13.00	07-053365-3	07-053368-3	07-053370-3	1200	15
31045-6	6.00	16.00	07-053365-6	07-053368-6	07-053370-6	1200	18
31045-12	12.00	22.00	07-053365-12	07-053368-12	07-053370-12	700	25
31045-18	18.00	28.00	07-053365-18	07-053368-18	07-053370-18	500	32

REV.	DESCRIPTION	DATE	BY	APP
A	ITEM #17 P/N WAS 07-051434; (ENG UPDATE)	3/26/01	VP	RCW
B	-ITEM 3 WAS SPRING PIN, LL 5/32 X 1-1/4 -ITEM 4 WAS SPRING PIN, LL5/32 X 1	11/9/04	TPC	MRS
C	C RE_PVED DPD-P-16232; C ADDED NOTES; C ADDED 413-23	3/28/05	DJH	MRS
D	ADDED JACK DATA	8/16/06	RWN	MRS



ITEM #	PART NUMBER	QTY	DESCRIPTION	MATERIAL OR NOTE	SPECIFICATION
21	50056	1	JACK CRANK ASSEMBLY		
20	14468	1	NAME PLATE		
19	34050-12	1	NUT, SELF LOCKING		
18	7523-23A	1	INSIDE PAD CUP		
17	7672-8	1	PAD		
16	32T32	1	BEARING		LUTCO
15	AA-650-04	1	BUSHING		
14	49823		SHIM		
13	16T	1	GEAR, 16 TEETH		(12:16 KM SERIES) ⚠
12	12T	1	GEAR, 12 TEETH		(12:16 KM SERIES) ⚠
11	50819	1	PINION SHAFT		
10	017-011	2	BUSHING		HAMMERBLOW
9	LL 3/16 X 1-1/4	2	SPRING PIN		
8	SEE CHART	1	ACME SCREW WELDMENT		3/4-6 LEFT HAND
7	SEE CHART	1	INNER TUBE ASSEMBLY		
6	SEE CHART	1	PIPER TUBE WELDMENT		
5	#10-32 X 1/2	4	BUTTON HD. SOCKET CAP SCREW		FASTENAL 24040
4	LL 5/32 X 1 SPP	1	SHEAR PROOF GROOVE PIN		#5/32 X 1" LG -4140 R/C 43-48 DRIV-LOK
3	LL5/32X1-1/4SPP	2	SHEAR PROOF GROOVE PIN		#5/32X1 1/4"LG-4140 R/C 43-48 DRIV-LOK
2	49758	1	GEAR COVER		
1	SQE-25-1014	1	EMD CAP		ALLIANCE

- NOTES:
- FINISH
 - 1.1. PHOS. COAT PER TT-C-490, TYPE 1 OR 3.
 - 1.2. PRIMER: 1-COAT PER TT-P-636 (RED OXIDE).
 - 1.3. SPRAY CONTACT PORTION OF INNER TUBE WITH LUBRIBOND 220 PRIOR TO ASSY.
 - 1.4. FINISH: PER SALES ORDER.
 - LUBRICATION: PER LUBE SPEC DOC 413-23, PACK BEARING AND COAT SCREW & NUT.
 - GEARS ARE PURCHASED AS A SET, 12:16 KM SERIES.

- Ⓧ JACK DATA:
- 8 REVS. INPUT FOR 1 INCH OF STROKE
 - 4,500 LB MAXIMUM STATIC COMPRESSION TO YIELD
 - APPROX. 250 INCH LB. TORQUE INPUT AT MAXIMUM OPERATING LOAD

DIMENSIONS ARE IN INCHES UNLESS OTHERWISE SPECIFIED

TOLERANCES UNLESS OTHERWISE SPECIFIED

MACHINING & STAMPING OPERATIONS	WELDMENTS & SHEET METAL FABRICATIONS
FRACTION: 24/16	FRACTION: 25/8
DECIMALS: .XX ± .03	DECIMALS: .XX ± .06
ANGULAR: 2.5	ANGULAR: .XX ± .03
XXX ± .005	

CODE IDENT NO. 52793 D PART NUMBER / FILE NAME: 31045

SCALE: 1/2 DO NOT SCALE DRAWING SHEET: 1 of 1 REFERENCE:

31045