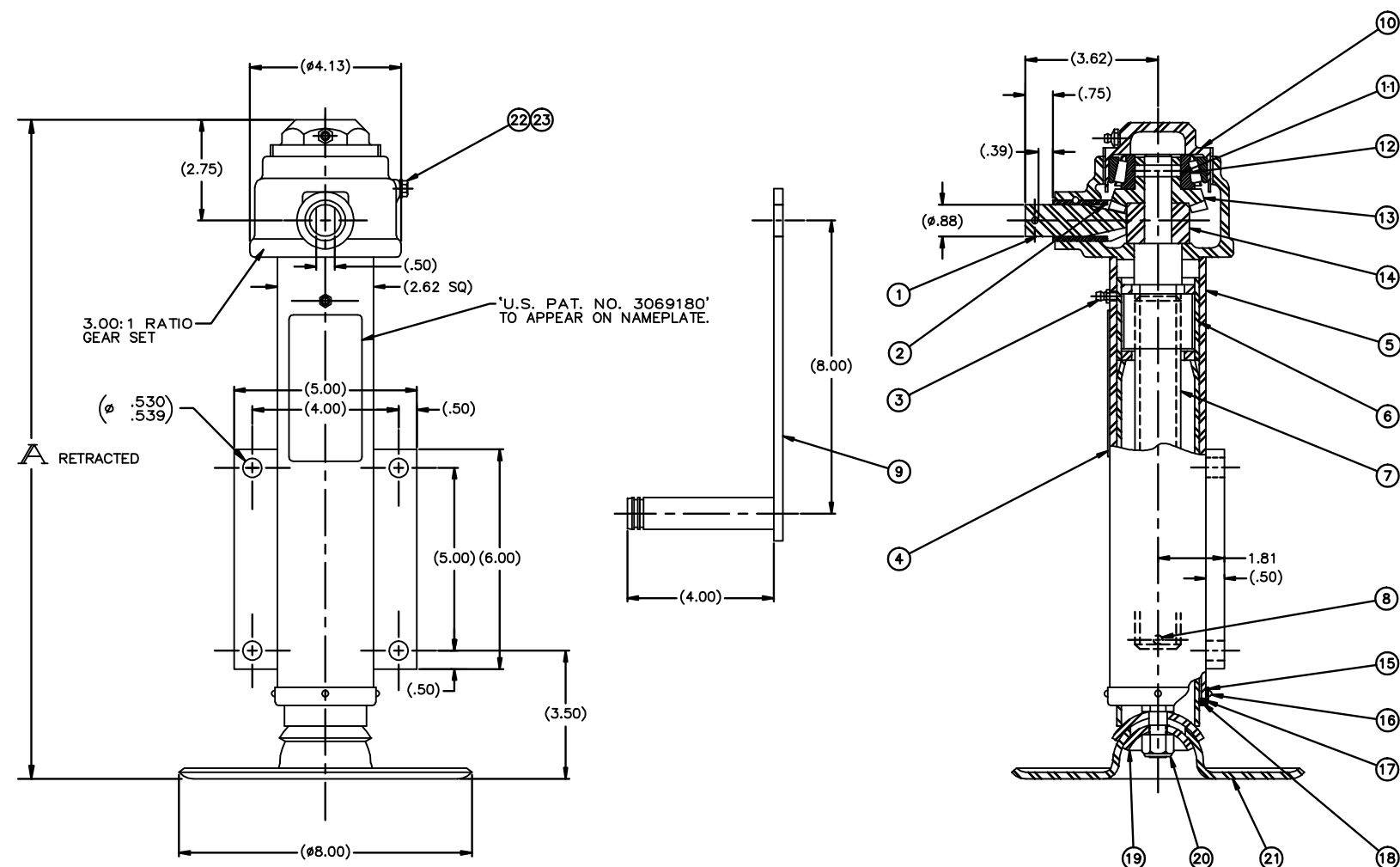


| PART NO. | STROKE | RETRACTED | OUTER TUBE ITEM 5 | INNER TUBE ITEM 6 | SCREW ITEM 7 | SIDE LOAD | WT. |
|----------|--------|-----------|-------------------|-------------------|----------------|-----------|-----|
| 31040-6 | 6 | 18 | D-07-031603-1 | D-07-014085-17 | C-07-014313-11 | 1100 | 30 |
| 31040-12 | 12 | 24 | D-07-031603-2 | D-07-014085-18 | C-07-014313-12 | 600 | 36 |
| 31040-18 | 18 | 30 | D-07-031603-3 | D-07-014085-19 | C-07-014313-13 | 400 | 42 |
| 31040-24 | 24 | 36 | D-07-031603-11 | D-07-014085-28 | C-07-014313-17 | 100 | 48 |
| 31040-30 | 30 | 42 | D-07-031603-23 | D-07-014085-35 | C-07-014313-38 | 40 | 52 |

| REV. | DESCRIPTION | DATE | BY | APP |
|------|--|----------|-----|-----|
| H | REDRAWN AND PUT ON AUTOCAD; (ENG UPDATE) | 10/7/96 | DJH | RCW |
| J | REMOVED "DOD-P-16232-B TYPE Z, CLASS 1 OR" FROM NOTE | 8/21/03 | KLK | RCW |
| K | "TYPE I OR II" WAS "TYPE I OR II" | 9/9/03 | KLK | RCW |
| L | L ₁ REMOVED PHOS COAT, 77-C-490; L ₂ ADDED PER SALES ORDER L ₃ REMOVED THE WORD 'ENAMEL'; L ₄ REMOVED OIL PHOSPHATE SURFACES WITH OIL PER MIL-L-3150; L ₅ UPDATED LUBE NOTE; L ₆ REMOVED HARDWARE NOTE; (ENG UPDATE) | 12/17/14 | DJH | MRS |
| M | M ₁ TYPE III (CKEAR) WAS TYPE II (YELLOW); M ₂ ADDED JACK DATA | 8/14/06 | RWN | MRS |



- NOTES:
- (L) 1. FINISH:
 - (K) (J)
 - (L) 1.2. PRIMER: 1-COAT PER TT-P-636 (RED OXIDE), UNLESS OTHERWISE SPECIFIED ON SALES ORDER.
 - (L) 1.3. FINISH; PER SALES ORDER.
 - (L) 1.4. PRIMER AND PAINT UNIT IN RETRACTED POSITION.
 - (L) 2. GREASE PER CIGNYS LUBE SPEC DOC 413-23. PACK BEARINGS, AND COAT SCREW & NUT. SPRAY CONTACT PORTION OF INNER TUBE WITH LUBRIBOND 220 PRIOR TO ASS'Y.
 - (M) 3. PLATING: ALL EXTERIOR HARDWARE ITEMS ZINC PLATE PER ASTM B-633-85, CLASS FE/ZN (.0002 THICK) TYPE III (CLEAR)
 - (L) 4.

- (M) JACK DATA:
1. 12 REVS. INPUT FOR 1 INCH OF STROKE
 2. 15,000 LB MAXIMUM STATIC COMPRESSION TO YIELD
 3. APPROX. 235 INCH LB. TORQUE INPUT AT MAXIMUM OPERATING LOAD

| ITEM # | PART NUMBER | QTY | DESCRIPTION | MATERIAL OR NOTE | SPECIFICATION |
|--------|-----------------|-----|-------------------------|----------------------|---------------|
| 23 | 1/4-20 X 3/4 | 1 | SCREW, HEX. HD. CAP | 1/4-20 X 3/4 LG | MS35291-6 |
| 22 | GG 1/4 ML | 1 | WASHER, LOCK | 1/4 MED. | MS35338-25 |
| 21 | 07-007672-8 | 1 | PAD, FOOT | | |
| 20 | 91-034050-12 | 1 | NUT, SELF LOCKING | 1/2-20 UNF | |
| 19 | 07-007523-23A | 1 | PAD, CUP INSIDE | | |
| 18 | 07-013398 | 2 | RING, SPACER | | |
| 17 | 07-013397 | 1 | SEAL, JACK | | |
| 16 | #6-32 X 3/16 | 4 | SCREW, MACH. PAN. HD. | #6-32UNC X 3/16 LG | MS35225-25 |
| 15 | 07-013396 | 1 | RETAINER, SEAL | | |
| 14 | 07-009829 | 1 | SPACER | | |
| 13 | 07-009830-1 | 1 | GEAR, BEVEL | | |
| 12 | 02475 | 1 | CONE, BEARING | TIMKEN OR EQ. | |
| 11 | LL 5/16 X 1-1/8 | 1 | PIN, SPRING | 5/16 DIA. X 1 1/8 LG | MS09047-264 |
| 10 | 07-009834 | 1 | CAP, GEAR HOUSING, ASSY | | |
| 9 | 07-014168-4 | 1 | HANDLE, CRANK | | |
| 8 | LL 1/4 X 1-1/4 | 1 | PIN, GROOVE | 1/4 DIA. X 1 1/4 LG | MS35674-41 |
| 7 | SEE CHART | 1 | SCREW, ASSY | 1 1/4-4 THD | |
| 6 | SEE CHART | 1 | INNER TUBE ASSY | | |
| 5 | SEE CHART | 1 | OUTER TUBE ASSY | | |
| 4 | 07-014468 | 1 | NAME PLATE | | |
| 3 | 1641-B | 1 | FITTING, LUBE | (1/4-28 THD) | MS15001-1 |
| 2 | 07-007552-7 | 1 | WASHER, THRUST | | |
| 1 | 07-009831 | 1 | GEAR, PINION | | |

| | | | | | |
|--|-------------|--------------------------------------|----------|---|---------|
| MATERIAL: SEE DETAILS | | DRAWN BY: RC GRESH | | GEOMETRY CREATED IN AutoCAD | |
| FINISH: | | CHECKED BY: DJH | | DESCRIPTION: LEVELING JACK-RIGID MOUNT 5,000 LBS OPERATING | |
| | | ENGINEERING APPROVAL: MRS | | CODE IDENT NO. 52793 | |
| | | DATE DRAWN: 9/27/63 | | SIZE: D | |
| | | CUSTOMER: | | PART NUMBER / FILE NAME: 31040 | |
| DIMENSIONS ARE IN INCHES UNLESS OTHERWISE SPECIFIED | | | | | |
| TOLERANCES UNLESS OTHERWISE SPECIFIED | | | | | |
| MACHINING & STAMPING OPERATIONS | | WELDMENTS & SHEET METAL FABRICATIONS | | SCALE: 1/2 | |
| FRACTION | DECIMALS | ANGULAR | FRACTION | DECIMALS | ANGULAR |
| 31/16 | .XX ± .03 | ±.5 | 31/8 | .XX ± .06 | ±.5 |
| | .XX ± .01 | | | .XXX ± .03 | |
| | .XXX ± .005 | | | | |
| DO NOT SCALE DRAWING | | | | | |
| REFERENCE: 42087 / 42082 / 36645 / 36832 / 42040 / 36630 PISTON LOCK | | | | | |

31040