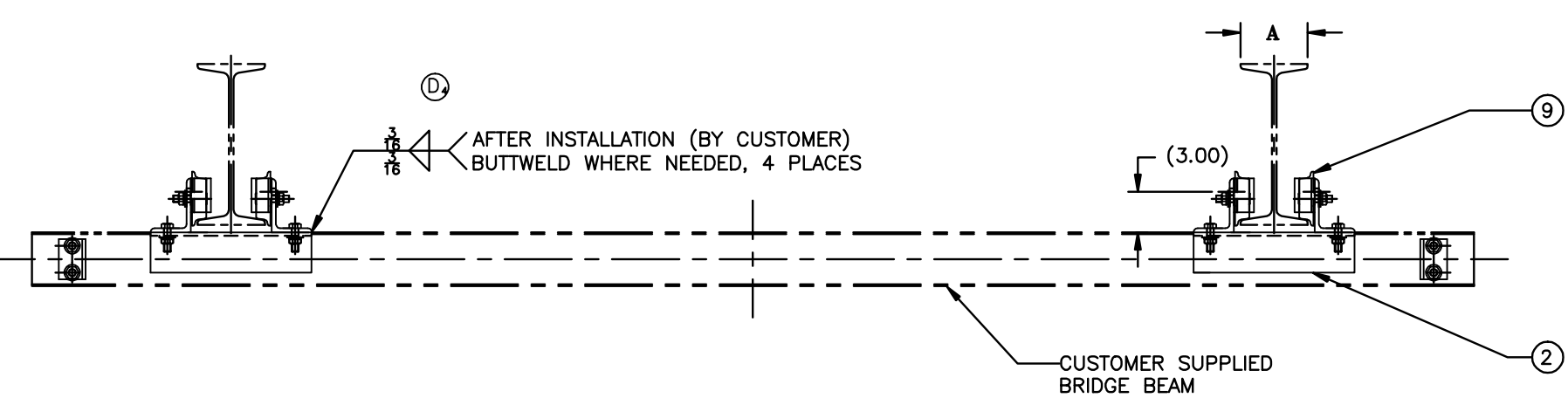
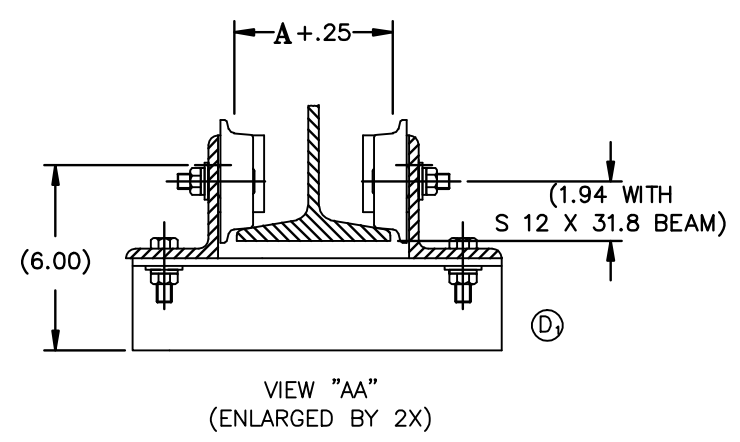
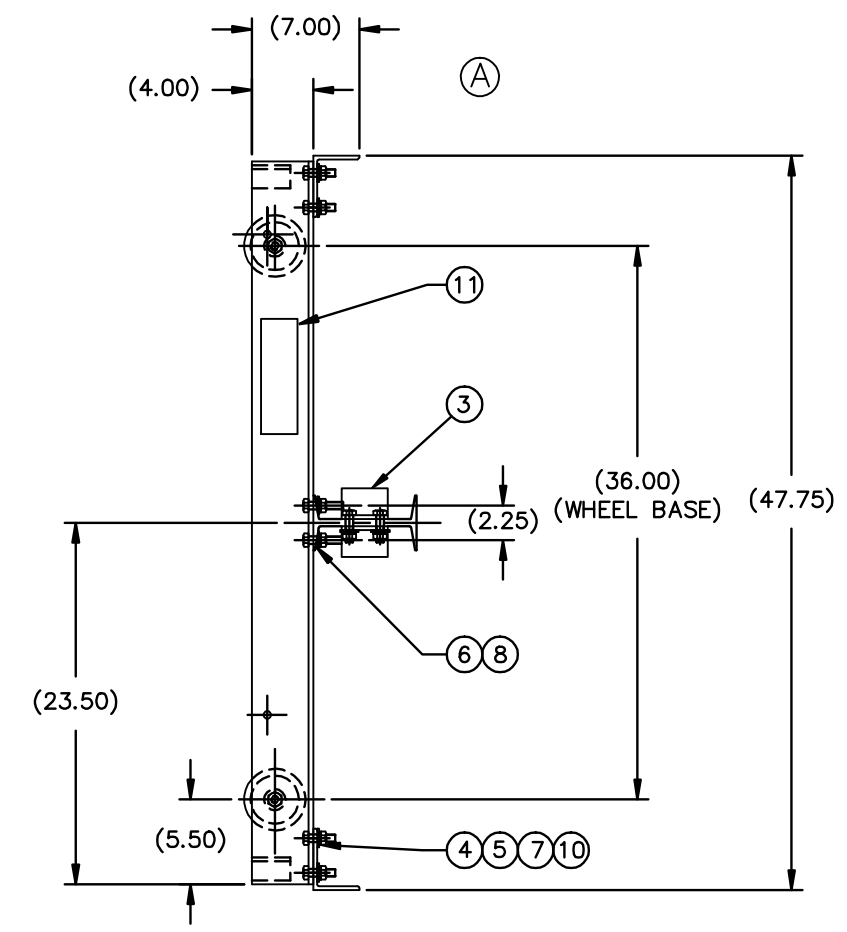
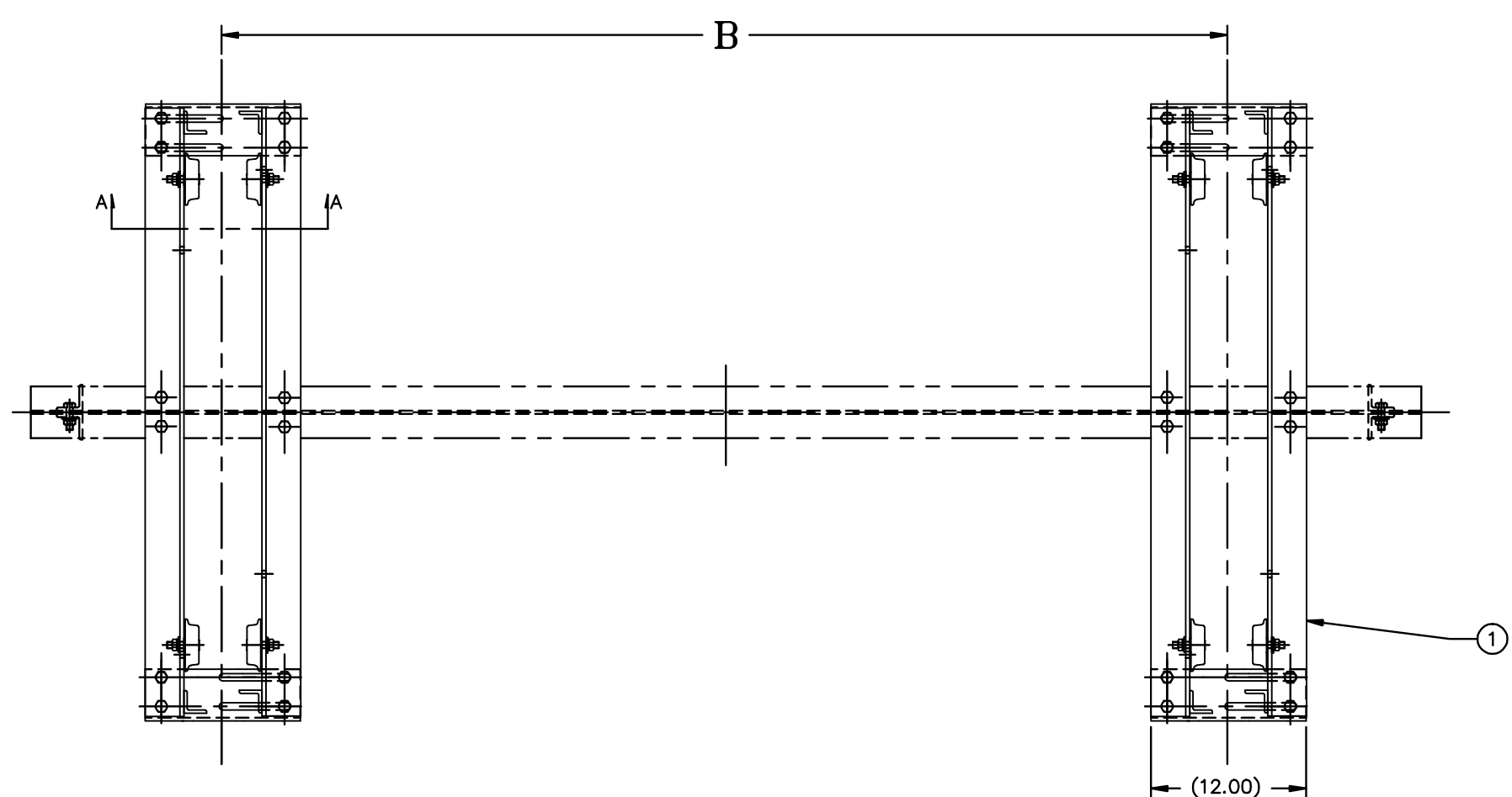


BEAM CHART (S-BEAMS)										A	"I" BEAM
B SPAN	10.0'	12.5'	15.0'	17.5'	20.0'	22.5'	25.0'	27.5'	30.0'	5.08	S 12.0 X 35
LOAD	500#	6 I X 12.5#	6 I X 12.5#	6 I X 12.5#	6 I X 12.5#	6 I X 12.5#	7 I X 15.3#	7 I X 15.3#	7 I X 20.0#	5.00	S 12.0 X 31.8
	1000#	6 I X 12.5#	7 I X 15.3#	7 I X 15.3#	7 I X 15.3#	7 I X 20.0#	8 I X 18.4#	8 I X 23.0#	10 I X 25.4#	3.33	S 6.0 X 12.5

REV.	DESCRIPTION	DATE	BY	APP
A	ADDED DIMENSIONS TO SIDE VIEW; (ENG UPDATE).	3/24/98	CRG	RCW
B	CONVERTED E SIZE TO D; INSERTED NOTES 2, 3 AND SUBBOLDS.	4/24/02	BJA	RCW
C	ITEM #9 WAS 50399	9/13/02	DDR	RCW
D	D ₁ ADDED VIEW; D ₂ ADDED NOTE; D ₃ ADDED CHART; D ₄ ADDED WELD NOTES	8/24/06	RWN	MRS



ITEM #	PART NUMBER	QTY	DESCRIPTION	MATERIAL OR NOTE	SPECIFICATION
11	50547	2	1/2 TON MAXIMUM CAPACITY DECAL		
10	1/2-13 X 1-3/4	20	HEX HEAD BOLT	1/2-13 X 1-3/4	GRADE 5, PLATED
9	51342	8	TROLLEY WHEEL ASSEMBLY		
8	GG 1/2 BEVEL	8	TAPERED WASHER	1/2 BOLT SIZE	
7	GG 1/2 ML	36	LOCK WASHER	1/2 MED	
6	1/2-13 X 2-1/4	8	HEX HEAD BOLT	1/2-13 X 2-1/4	GRADE 5, PLATED
5	6620-11	36	FLAT WASHER	.546 ID X 1.203 OD X 1GA THK	PLATED
4	DD 1/2-13 HFN	36	HEX. NUT	1/2-13	
3	50393	4	SPAN BEAM CLIP		
2	50394	4	BOTTOM ANGLE		
1	50397	4	SIDE ANGLE WELDMENT		

NOTE:
 1. OPTIONAL RUBBER BUMPER KIT PART NUMBER 44601 (8 44601-1 RUBBER BUMPERS.)
 2. SUPPLIED IN HARDWARE KIT 02-054478.
 3. 28 OF THE 36 REQUIRED ARE SUPPLIED IN HARDWARE KIT B-02-054478.
 4. BRIDGE CRANES CAN ALSO BE RUN ON W-BEAM SHAPES AND RAILS.

NEXT ASSEMBLY		USED ON:	
<small>THIS DRAWING AND THE SUBJECT MATTER ILLUSTRATED IS THE PROPERTY OF CIGNYS. THE DRAWING IS NOT TO BE COPIED IN PART OR WHOLE, DUPLICATED, REPRODUCED, USED BY PARTIES OTHER THAN CIGNYS TO MANUFACTURE THE SUBJECT MATTER ILLUSTRATED, OR SUBMITTED TO OTHER PARTIES WITHOUT THE EXPRESS WRITTEN AUTHORIZATION OF CIGNYS.</small>			
MACHINING & STAMPING OPERATIONS		WELDMENTS & SHEET METAL FABRICATIONS	
FRACTION	DECIMALS	ANGULAR	FRACTION
1/16	.03	±5°	1/8
	.XX ± .01		.XX ± .06
	.XXX ± .005		.XXX ± .03

DESCRIPTION:	BRIDGE CRANE ASSEMBLY RAIL TO 5.08 FLANGE BEAM (1/2 TON CAPACITY)		
CODE IDENT NO.	52793	SIZE	D
PART NUMBER / FILE NAME:	50386		
SCALE:	1/8	DO NOT SCALE DRAWING	SHEET: 1 of 1

REFERENCE: 50387, 52039 CHARTED

50386