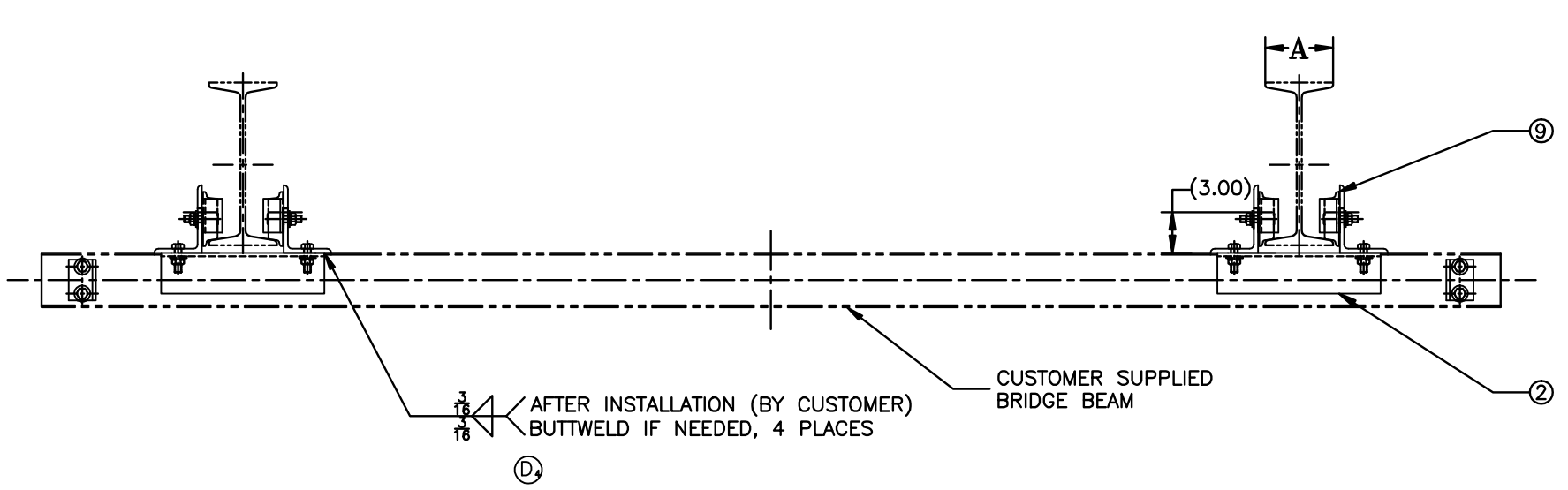
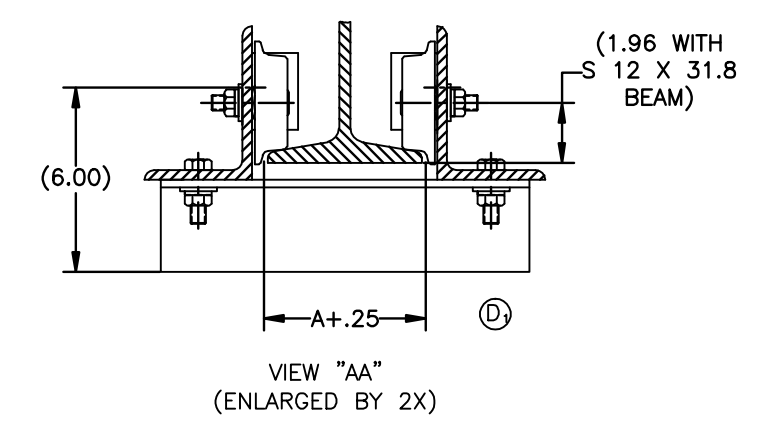
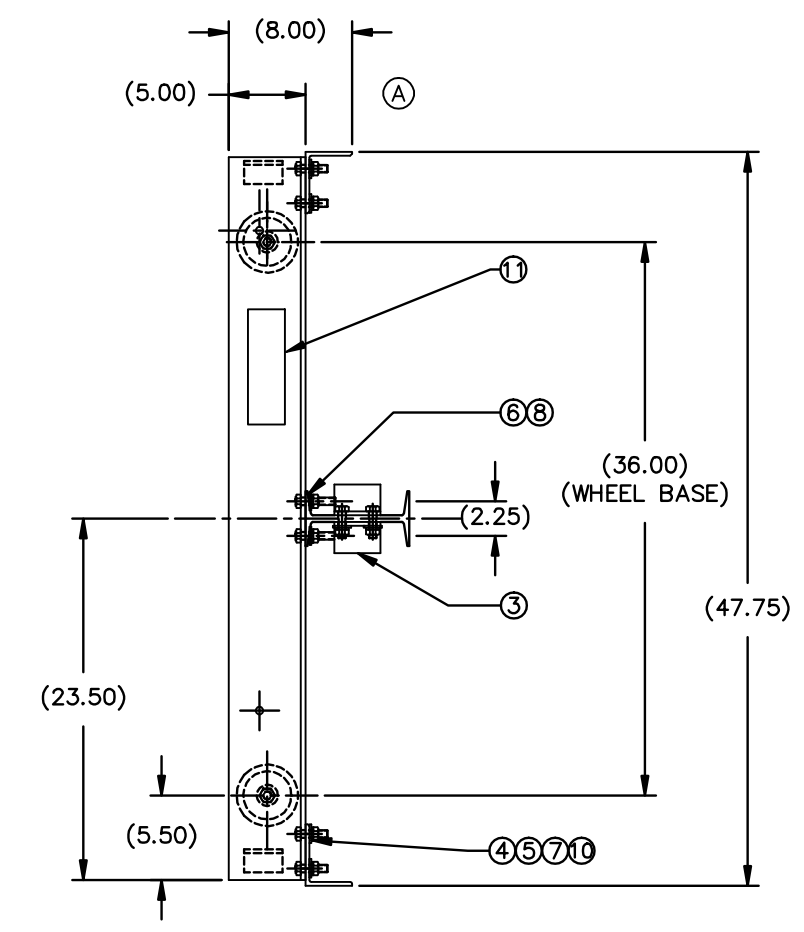
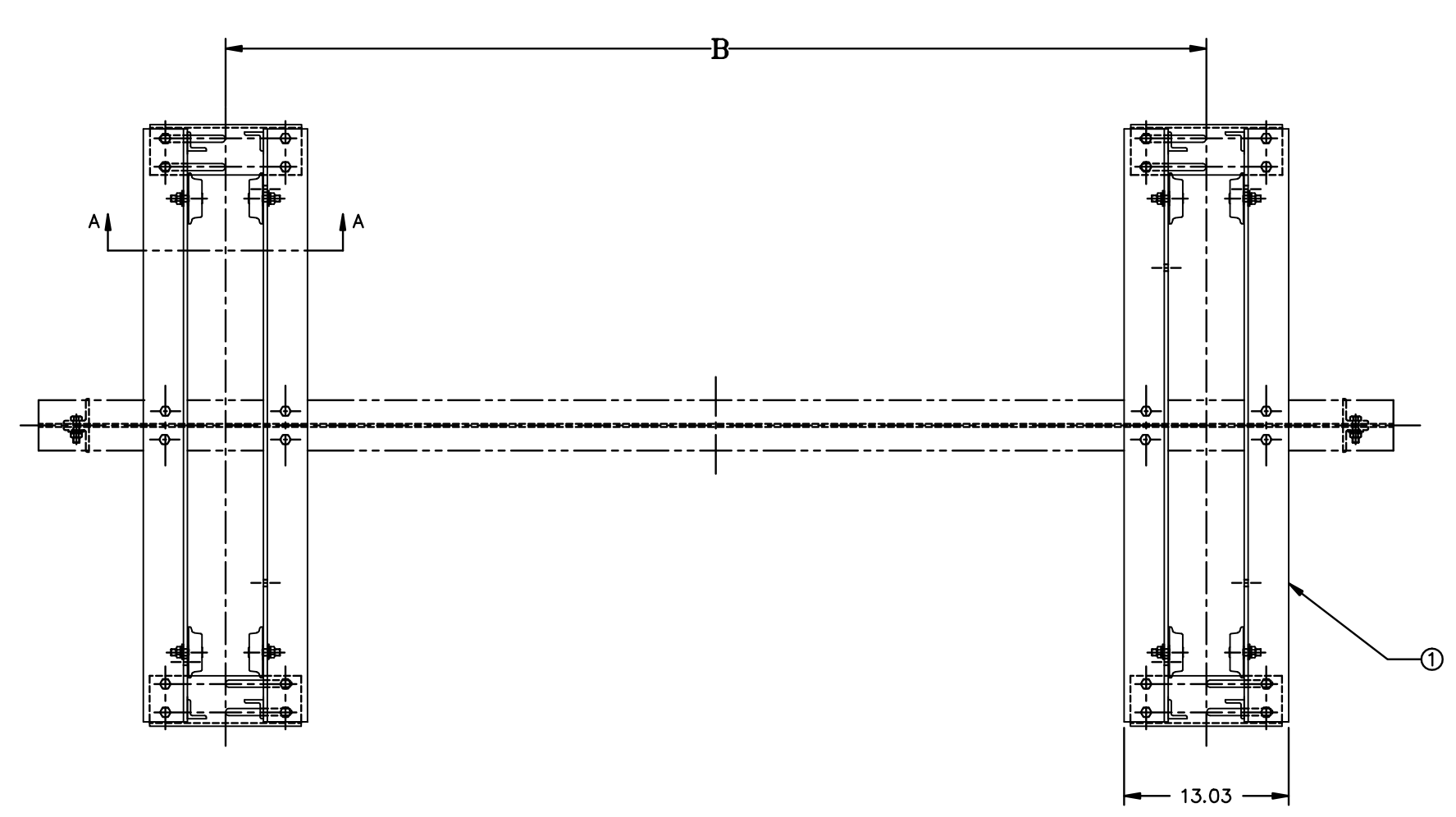


BEAM CHART (S-BEAMS)										A	"I" BEAM
B SPAN	10.0'	12.5'	15.0'	17.5'	20.0'	22.5'	25.0'	27.5'	30.0'		
LOAD	500#	6 I X 12.5#	6 I X 12.5#	6 I X 12.5#	6 I X 12.5#	6 I X 12.5#	7 I X 15.3#	7 I X 15.3#	7 I X 20.0#	5.08	S 12 X 35
	1000#	6 I X 12.5#	7 I X 15.3#	7 I X 15.3#	7 I X 15.3#	7 I X 20.0#	8 I X 18.4#	8 I X 23.0#	10 I X 25.4#	5.00	S 12 X 31.8
	2000#	7 I X 15.3#	8 I X 18.4#	8 I X 23.0#	10 I X 25.4#	10 I X 25.4#	10 I X 35.0#	12 I X 31.8#	12 I X 35.0#	3.33	S 6 X 12.5

REV.	DESCRIPTION	DATE	BY	APP
A	ADDED DIMENSIONS TO SIDE VIEW	3/24/98	CRG	RCW
B	CONVERTED E SIZE TO D; INSERTED NOTE 2, 3 AND SYMBOLS	4/24/02	BJA	RCW
C	PART No. WAS 02-050399, NOW 51342	9/13/02	DDR	RCW
D	D ₁ ADDED VIEW; D ₂ ADDED NOTE; D ₃ ADDED CHART; D ₄ ADDED WELD NOTE	8/28/06	RWN	MRS



ITEM #	PART NUMBER	QTY	DESCRIPTION	MATERIAL OR NOTE	SPECIFICATION
11	50548	2	1 TON DECAL		
10	1/2-13 X 1-3/4	20	HEX. HEAD BOLT	1/2-13 X 1-3/4	GRADE 5, PLATED
9	51342	8	TROLLEY WHEEL ASSEMBLY		
8	GG 1/2 BEVEL	8	TAPERED WASHER	1/2 BOLT SIZE	
7	GG 1/2 ML	36	LOCK WASHER	1/2 MED	
6	1/2-13 X 2-1/4	8	HEX. HEAD BOLT	1/2-13 X 2-1/4	GRADE 5, PLATED
5	6620-11	36	FLAT WAHSER	.546 ID X 1.203 OD X 1 GA THK	PLATED
4	DD 1/2-13 HFN	36	HEX. NUT	1/2-13	
3	50393	4	SOAN BEAM CLIP		
2	50394	4	BOTTOM ANGLE		
1	50398	4	SIDE ANGLE WELDMENT		

MATERIAL: SEE DETAILS	DRAWN BY: CRG	GEOMETRY CREATED IN: AutoCAD	AGNYS Multifaceted & Multifunctional Manufacturing www.agnys.com
FINISH:	CHECKED BY: RCW	DESCRIPTION: BRIDGE CRANE ASSEMBLY RAIL TO 5.08 BEAM FLANGE (1 TON CAPACITY)	
	ENGINEERING APPROVAL: MRS	DATE DRAWN: 9/2/97	
	CUSTOMER:		
DIMENSIONS ARE IN INCHES UNLESS OTHERWISE SPECIFIED			
TOLERANCES UNLESS OTHERWISE SPECIFIED			
MACHINING & STAMPING OPERATIONS		WELDMENTS & SHEET METAL FABRICATIONS	
FRACTION: 1/16	DECIMALS: .03	ANGULAR: ±5°	FRACTION: 1/8
	.XX ± .01		DECIMALS: .06
	.XXX ± .005		ANGULAR: ±5°
CODE IDENT NO.: 52793	SIZE: D	PART NUMBER / FILE NAME: 50387	
SCALE: 1/8	DO NOT SCALE DRAWING		SHEET: 1 of 1

- NOTE:
- OPTIONAL RUBBER BUMPER KIT PART NUMBER 44601 (8 44601-1 RUBBER BUMPERS.)
 - SUPPLIED IN HARDWARE KIT B-02-054478.
 - 28 OF 36 REQUIRED ARE SUPPLIED IN HARDWARE KIT B-02-054478.
 - CAN ALSO BE USED ON W-SHAPED BEAMS, ON TOP OF BEAMS, AND RAILS.

THIS DRAWING AND THE SUBJECT MATTER ILLUSTRATED IS THE PROPERTY OF AGNYS. THE DRAWING IS NOT TO BE COPIED IN PART OR WHOLE, DUPLICATED, REPRODUCED, USED BY PARTIES OTHER THAN AGNYS TO MANUFACTURE THE SUBJECT MATTER ILLUSTRATED, OR SUBMITTED TO OTHER PARTIES WITHOUT THE EXPRESS WRITTEN AUTHORIZATION OF AGNYS.

50387