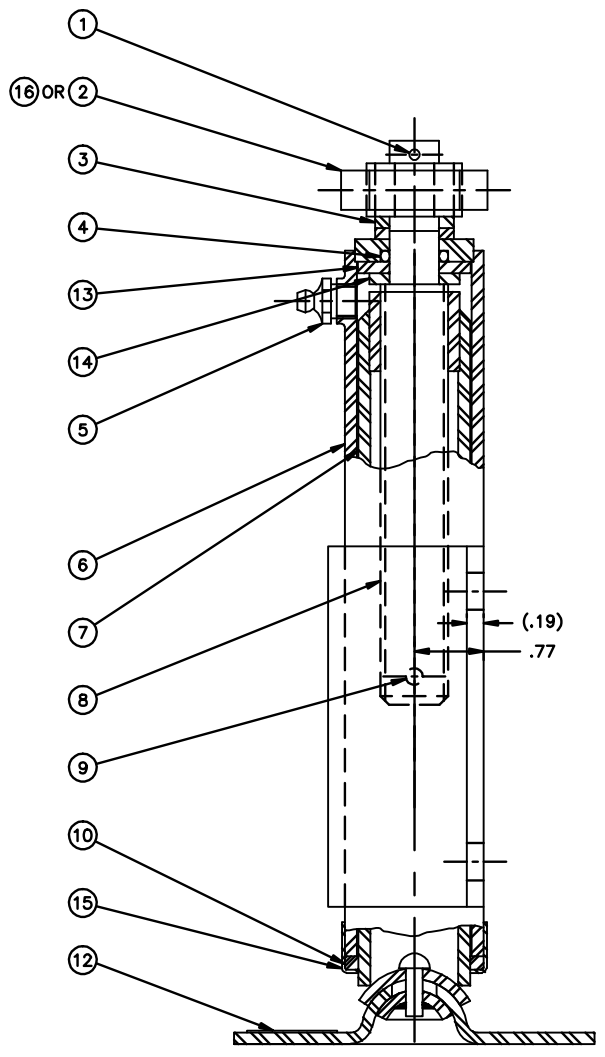
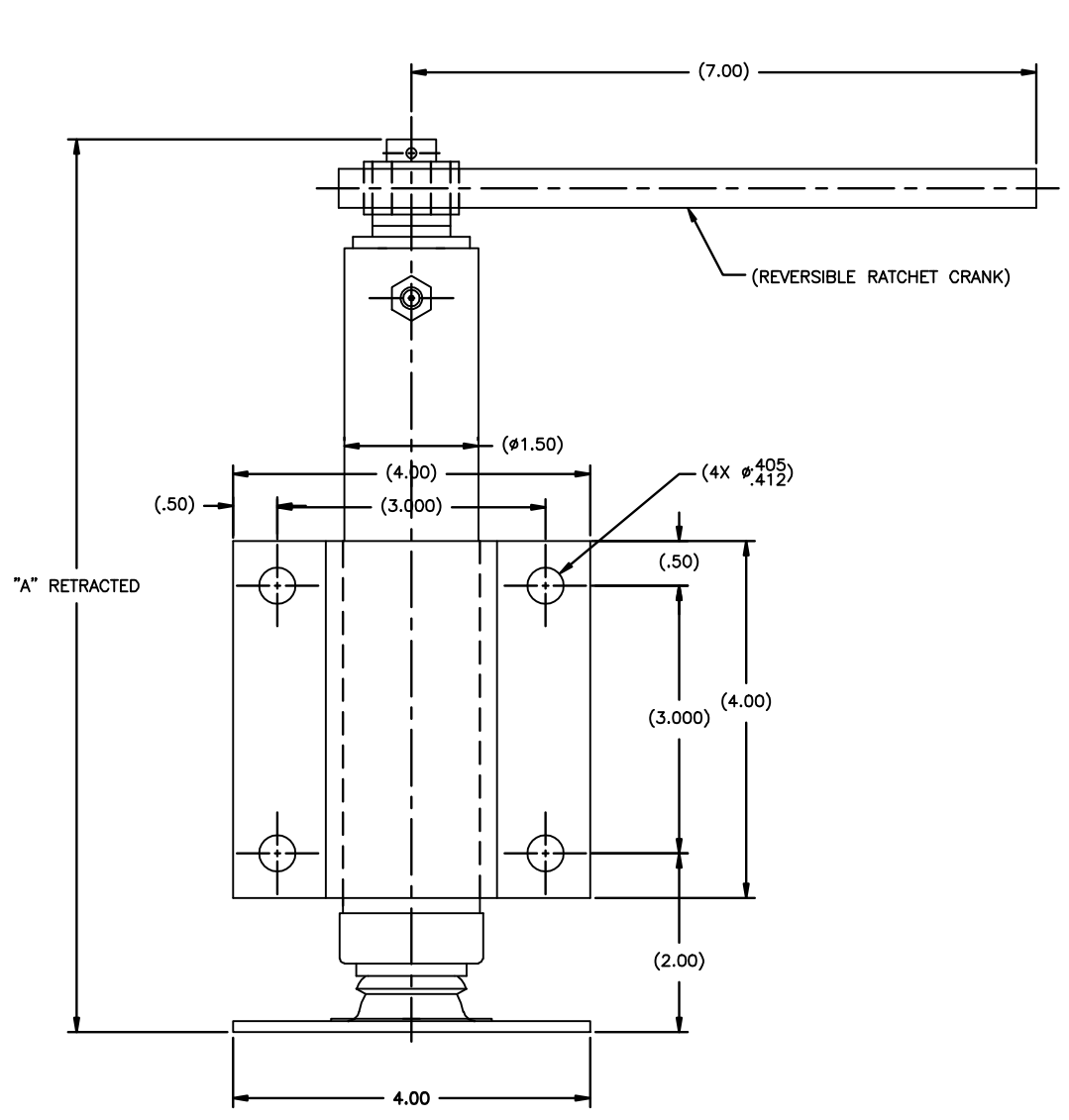


PART No.	STROKE	"A" RETRACTED	OUTER TUBE ITEM 6	INNER TUBE ITEM 7	SCREW ITEM 8	SIDE LOAD	WT.
31060-3	3	10	31061-1	37778-2	13825-2	800	5
31060-6	6	13	31061-2	37778-2	13825-3	450	6.5
31060-9	9	16	31061-3	37778-2	13825-4	300	8
31060-3H	3	10	31061-1	37778-12	13825-2	800	5

REV.	DESCRIPTION	DATE	BY	APP
L	REVISED & REDRAWN IN AUTOCAD	8/16/06	RWN	MRS
M	CORRECTED JACK DATA	12/1/06	RWN	MRS



- NOTES:
- FINISH:
    - PRIMER: 1-COAT PER TT-P-636 (RED OXIDE), UNLESS OTHERWISE SPECIFIED ON SALES ORDER.
    - FINISH PER SALES ORDER.
    - PRIMER AND PAINT UNIT IN RETRACTED POSITION.
  - GREASE PER CIGNYS LUBE SPEC DOC 413-23. PACK BEARINGS, AND COAT SCREW & NUT. SPRAY CONTACT PORTION OF INNER TUBE WITH LUBRIBOND 220 PRIOR TO ASSY.
  - PLATING: ALL EXTERIOR HARDWARE ITEMS ZINC PLATE PER ASTM B-633-85, CLASS FE/ZN (.0002 THK.) TYPE III (CLEAR)
  - SEE D-34752 FOR JACK ASSEMBLY WITH NO RATCHET CRANK.
- ⚠️ ITEMS 2 & 16 ARE NOT TO BE USED ON THE SAME ASS'Y WHEN ITEM 16 IS USED ONE OF ITEM 3 (13823) IS REQUIRED

- Ⓜ JACK DATA:
- 6 REVS. INPUT FOR 1 INCH OF STROKE
  - 1,500 LB MAXIMUM STATIC COMPRESSION TO YIELD
  - APPROX. 240 INCH LB. TORQUE INPUT AT MAXIMUM OPERATING LOAD

ITEM #	PART NUMBER	QTY	DESCRIPTION	MATERIAL OR NOTE	SPECIFICATION
16	#11	1	RATCHET WRENCH	(LOWELL #11)	(37078)
15	38414	1	CAP, SEAL		
14	14042	1	THRUST WASHER		
13	37518	1	THRUST BEARING		
12	16646	1	NAME PLATE		
11					
10	TS 33-218	1	RING, SQ. SECTION	1-1/4 I.D. X 1-1/2 O.D. X 1/8 THK	218 O-RING
9	LL 3/16 X 3/4	1	GROOVE PIN	Ø3/16 X 3/4 LG	
8	SEE CHART	1	ACME SCREW	3/4-6 THD	
7	SEE CHART	1	INNER TUBE WELDMENT		
6	SEE CHART	1	OUTER TUBE WELDMENT		
5	1610-B	1	FITTING, LUBE	(1/8 NPT)	
4	MI-558-113	1	O-RING	.549 I.D. X .652 O.D.	
3	13823	2	WAHSER		
2	UX 11	1	REVERSIBLE RATCHET WRENCH	(LOWEL #101)	(37078)
1	LL 1/8 X 3/4 GP	1	GROOVE PIN	Ø1/8 X 3/4 LG.	

MATERIAL: \_\_\_\_\_ DRAWN BY: R.C.GERISH  
 CHECKED BY: G.M.S  
 ENGINEERING APPROVAL: MRS  
 DATE DRAWN: 10/24/63  
 CUSTOMER: \_\_\_\_\_

GEOMETRY CREATED IN AutoCAD  
**CIGNYS** Multifaceted & Multifunctional Manufacturing www.cignys.com  
 DESCRIPTION: LEVELING JACK--RIGID MOUNT  
 500 LBS OPERATING

DIMENSIONS ARE IN INCHES UNLESS OTHERWISE SPECIFIED  
 TOLERANCES UNLESS OTHERWISE SPECIFIED

MACHINING & STAMPING OPERATIONS			WELDMENTS & SHEET METAL FABRICATIONS		
FRACTION	DECIMALS	ANGULAR	FRACTION	DECIMALS	ANGULAR
1/16	.XX ± .03	±5°	1/8	.XX ± .06	±5°
	.XXX ± .01			.XXX ± .03	

CODE IDENT NO. 52793 SIZE D PART NUMBER / FILE NAME: 31060  
 SCALE: 1:1 DO NOT SCALE DRAWING SHEET: 1 of 1

THIS DRAWING AND THE SUBJECT MATTER ILLUSTRATED IS THE PROPERTY OF CIGNYS. THE DRAWING IS NOT TO BE COPIED IN PART OR WHOLE, DUPLICATED, REPRODUCED, USED BY PARTIES OTHER THAN CIGNYS TO MANUFACTURE THE SUBJECT MATTER ILLUSTRATED, OR SUBMITTED TO OTHER PARTIES WITHOUT THE EXPRESS WRITTEN AUTHORIZATION OF CIGNYS.

31060