

These precision tapered bearing rollers are designed for use in heavy-load applications.

These rollers are sealed for life, however, provision for relube through the bore is an integral part of the design.

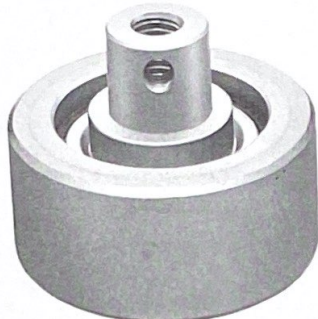
For special conditions requiring roller turn roller bolts with grease fitting; use rollers having Dust Covers.

CATALOG NUMBER	OUTSIDE DIAMETER	INSIDE DIAMETER	LENGTH THRU BORE	FACE LENGTH	WEIGHT POUNDS	END CLOSURE
44805-3	2-13/16"	5/8"	2-1/8"	1-7/8"	2.9	DUST COVER
44805-4	2-13/16"	3/4"	2-1/8"	1-7/8"	2.9	DUST COVER
47984-3	2-13/16"	5/8"	2-1/8"	1-7/8"	2.9	RUBBER SEAL
47984-4	2-13/16"	3/4"	2-1/8"	1-7/8"	2.9	RUBBER SEAL
44157-3	2-13/16"	5/8"	2-3/4"	2-9/16"	3.7	RUBBER SEAL
44157-4	2-13/16"	3/4"	2-3/4"	2-9/16"	3.7	RUBBER SEAL
44161-3	2-13/16"	5/8"	2-13/16"	2-9/16"	3.7	RUBBER SEAL
44161-4	2-13/16"	3/4"	2-13/16"	2-9/16"	3.7	RUBBER SEAL
44167-3	2-13/16"	5/8"	2-13/16"	2-9/16"	3.7	DUST COVER
44167-4	2-13/16"	3/4"	2-13/16"	2-9/16"	3.7	DUST COVER
47982-3	3"	5/8"	2-3/4"	2-9/16"	4.5	RUBBER SEAL
47982-4	3"	3/4"	2-3/4"	2-9/16"	4.5	RUBBER SEAL
49903-3	3"	5/8"	2-3/4"	2-9/16"	4.5	DUST COVER
49903-4	3"	3/4"	2-3/4"	2-9/16"	4.5	DUST COVER

Saginaw Products Corporation may make dimensional changes without notice to improve its product or the application.

On request, Saginaw Products Corporation engineers will furnish certified data as required.

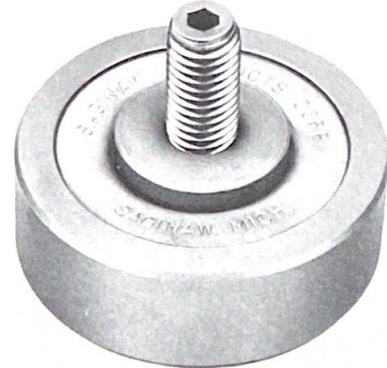




PART NO: 45805

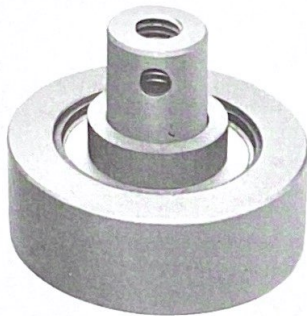


PART NO: 42861  
REF #439

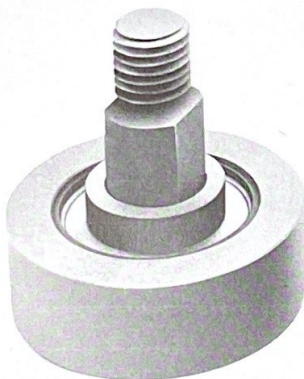


PART NO: 45081-1  
REF #429

Lubricated with Molub-Alloy #2 Grease Standard



PART NO: 45611



PART NO: 45607

These ball bearing rollers are available "Off the Shelf". All bearing races along with the roller face are hardened to offer optimum service life. This allows minimum wear, prolonged bearing life and maximum corrosion protection. Maintenance costs are lowered and roller life is lengthened when lubricants are installed during assembly.

CATALOG NUMBER	OUTSIDE DIAMETER	CONE I.D. (AXLE DIA.)	OVER-ALL WIDTH	FACE WIDTH	WT. EACH (LBS.)	STYLE
45805	2.94"	1/2-13 x 1-1/4" threaded i.d.	1.37"	1.32"	2.0	note 1
45611	2.94"	1/2-13 x 1-1/4" threaded i.d.	1.31"	1.09"	2.0	note 1
45607	2.94"	(3/4-10) axle	1.31"	1.09"	2.2	note 1
44782	3.00" (special)	(5/8-11) axle	2.90"	2.75"	5.0	S.F.L.
45081-1 (429)	3-3/16"	(5/8-11) axle	1.22"	1.06"	2.0	S.F.L.
42861 (439)	3-1/4"	(5/8-11) axle	2.90"	2.75"	5.0	S.F.L.

NOTE 1. SEALED PRECISION BALL BEARING

# SPECIAL ROLLERS



# SAGINAW

PRODUCTS CORPORATION



PART NO: 44045-3Z  
REF #4253

Lubricated with  
Molub-Alloy #2 Grease  
Standard



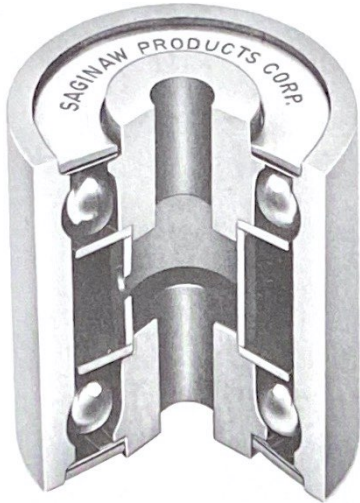
PART NO: 44044

CATALOG NUMBER	OUTSIDE DIAMETER	LENGTH THRU BORE	INSIDE DIAMETER (AXLE)	LUBE STYLE	FACE WIDTH	WEIGHT LBS.
44044	3-1/4"	4-1/2"	(1"-8) axle	S.F.L. molub #2	4-7/16"	9.9
★44120-3Z	2-5/8"	4-1/4"	5/8"	S.F.L. molub #2	3-7/8"	3.4
★44045-3Z (4253)	2-9/16"	4-1/4"	5/8"	S.F.L. molub #2	3-7/8"	3.4
★★44218-3Z	2-9/16"	3-7/8"	5/8"	S.F.L. molub #2	3-1/2"	3.1

★ REQUIRES BOLT NUMBER 45216  
★★ REQUIRES BOLT NUMBER 44219

Saginaw Products Corporation may make dimensional changes without notice to improve its product or the application. On request, Saginaw Products Corporation engineers will furnish certified data as required.

68 Williamson Street • Saginaw, Michigan 48601 • Phone 517/753-1411 • Fax 517/753-4386



These pre-lubricated and sealed roller turn rollers can be used with either plain bolts or bolts with a grease provision. Units are available in 1/2", 9/16", 5/8" and 3/4" bore sizes. An extra large cavity within each roller provides adequate storage for grease, reducing the frequency of maintenance. Inner grease shelves keep the lubricant at each ball race providing improved reliability. These units are lubricated with Sunaplex 992-EP high-temp. grease which has an operating range of 32° to 350°F. All bearing races along with the roller face are hardened to offer optimum service life. Units with felt wiper seals are also available on request. These are classified as "Sealed For Life" units and are designated with a "Z" suffix in the part number. All rollers with the "Z" suffix are lubricated with Texaco "RB" grease. A lube (oil) hole in the roller turn roller end cap is optional and must be specified when ordering.

★ These units are available in 1/2", 9/16", 5/8" and 3/4" bore sizes. A part number suffix of:

- 1 represents 1/2" bore
- 2 represents 9/16" bore
- 3 represents 5/8" bore
- 4 represents 3/4" bore

★★ Units with felt wiper seals are also available on request. They are "Sealed For Life" (S.F.L.) and are ordered with "Z" suffix part numbers. (i.e.: 3112-3Z, represents 2-3/4" dia. roller with 2-3/4" length thru bore, having a 5/8" bore size and felt wiper seals.) All rollers with the "Z" suffix are lubricated with Texaco "RB" grease.

- † STAINLESS STEEL ASSY.
- †† GROOVE ON FACE FOR 458 CHAIN
- ††† GROOVE ON FACE FOR 678 CHAIN
- †††† URETHANE COVERED SHELL

CATALOG NUMBER	OUTSIDE DIAMETER	LENGTH THRU BORE	FACE LENGTH	★ INSIDE DIAMETER	★★ LUBE STYLE	APPROX. WEIGHT (LBS)
45373-1	2-5/16"	1-5/8"	1-1/2"	1/2"	re-lube	1.7
44218-1	2-9/16"	3-7/8"	3-1/2"	1/2"	re-lube	4.3
44045-1Z	2-9/16"	4-1/4"	3-7/8"	1/2"	S.F.L.	3.4
44120-1	2-5/8"	4-1/4"	3-7/8"	1/2"	re-lube	5.0
3323-1	2-3/4"	1-7/8"	1-11/16"	1/2"	re-lube	2.1
33615-1	2-3/4"	2"	1-13/16"	1/2"	re-lube	2.2
8793-1	2-3/4"	2-1/8"	1-15/16"	1/2"	re-lube	2.3
3131-1	2-3/4"	2-9/16"	2-3/8"	1/2"	re-lube	2.7
3112-1	2-3/4"	2-3/4"	2-9/16"	1/2"	re-lube	2.9
† 44810-1Z	2-3/4"	2-3/4"	2-9/16"	1/2"	S.F.L.	2.9
3132-1	2-3/4"	3"	2-13/16"	1/2"	re-lube	3.1
3134-1	2-3/4"	3-1/2"	3-5/16"	1/2"	re-lube	3.5
44607-1	2-3/4"	4-1/4"	4-1/16"	1/2"	re-lube	4.2
†† 3004	2-7/8" 2-25/32"	2"	1-13/16"	1/2"	re-lube	2.3
44622-1	3"	2-1/8"	1-15/16"	1/2"	re-lube	3.0
42535-1	3"	2-3/4"	2-9/16"	1/2"	re-lube	3.7
43661-1	3"	3"	2-13/16"	1/2"	re-lube	4.1
44734-1Z	3"	4-1/4"	4-1/16"	1/2"	S.F.L.	5.5
††† 47498-1	3-9/64" 3"	2-3/4"	2-9/16"	1/2"	re-lube	4.5
††† 42920-1	3-9/64" 3"	2-7/8"	2-9/16"	1/2"	re-lube	4.6
43663-1	3-1/4"	3"	2-3/4"	1/2"	re-lube	6.1
†††† 44045-1ZR	3-1/2"	4-1/4"	3-7/8"	1/2"	S.F.L.	4.7

Saginaw Products Corporation may make dimensional changes without notice to improve its product or the application. On request, Saginaw Products Corporation engineers will furnish certified data as required.

68 Williamson Street • Saginaw, Michigan 48601 • Phone 517/753-1411 • Fax 517/753-4386

