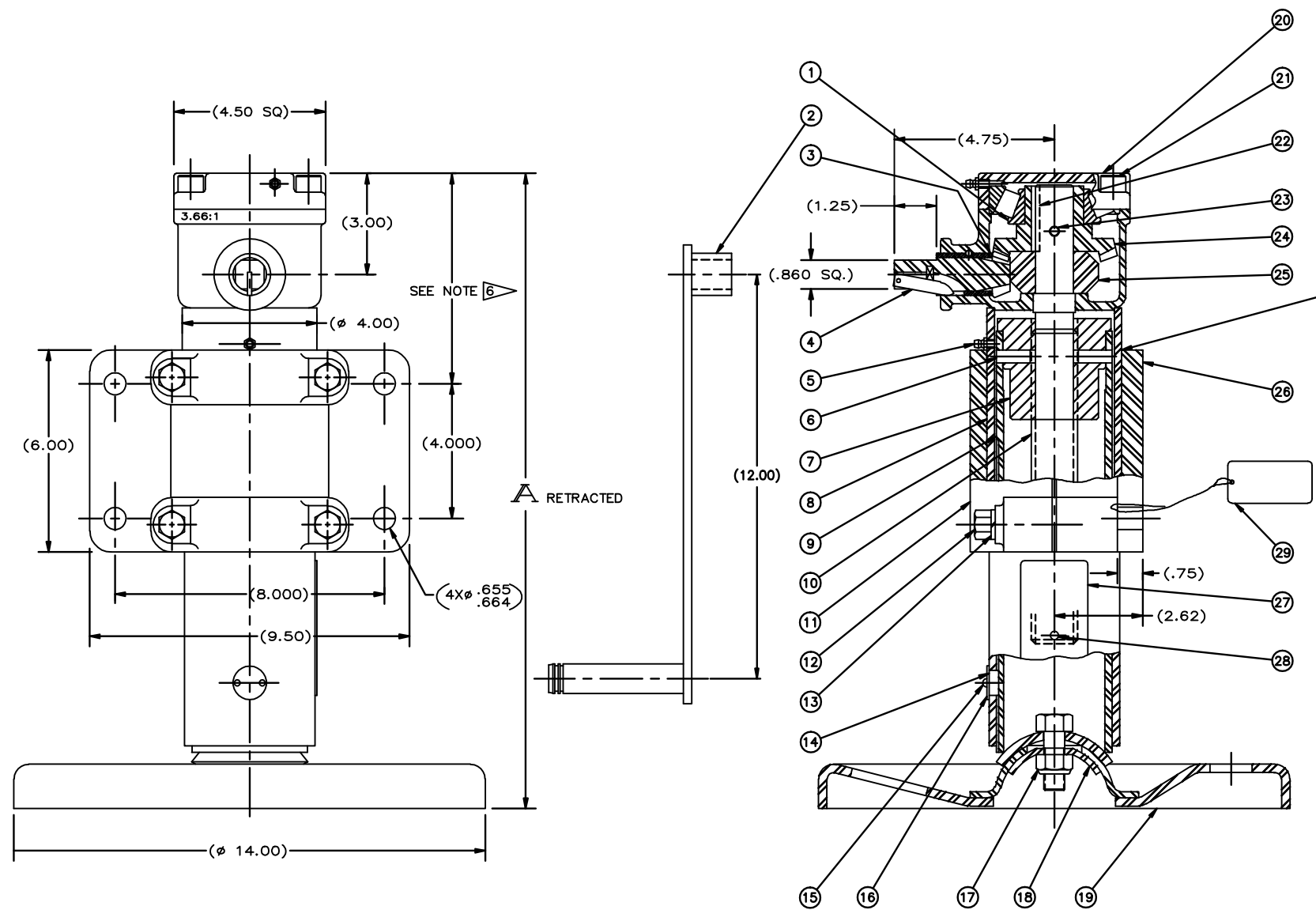


PART NO.	STROKE	RETRACTED	OUTER TUBE ITEM 8 R.H.	INNER TUBE ITEM 9	SCREW ITEM 10	SIDE LOAD	WT.
31010-6	6	19	D-07-031011-1	D-07-031013-1	C-07-014651-8	6300	86
31010-12	12	25	D-07-031011-2	D-07-031013-2	C-07-014651-9	3600	98
31010-18	18	31	D-07-031011-3	D-07-031013-3	C-07-014651-10	2500	110
31010-20	20	33	D-07-031011-6	D-07-031013-6	C-07-014651-17	2100	114
31010-24	24	37	D-07-031011-7	D-07-031013-7	C-07-014651-18	1650	126
31010-25	25	38	D-07-031011-10	D-07-031013-10	C-07-014651-22	1600	128
31010-30	30	43	D-07-031011-	D-07-031013-	C-07-014651-	1300	134

REV.	DESCRIPTION	DATE	BY	APP
M	PUT ON AUTOCAD	2-5-92	DJH	
N	SPRING PIN #3/8 X 3/4" LG. WAS 1" LG.; (ENG. UPDATE)	7/12/01	BJA	RCW
P	P ₁ WAS COML. MS90725-118; P ₂ WAS COML. MS35338-29; P ₃ REMOVED PHOS. COAT NOTE	11/15/02	KLK	RCW
Q	ITEM 28 WAS COML. Ø1/4 X 1 3/8 LG. TYPE 3	1/29/04	KLK	MRS
R	R ₁ REVISED & ADDED P/N 31010-25 TO CHART; R ₂ ITEM 8 R.H. WAS ITEM 10 R.H.; R ₃ ITEM 9 WAS ITEM 11; R ₄ ITEM 10 WAS ITEM 12 R ₅ ADDED 1650 SIDE LOAD; R ₆ ADDED 1300 SIDE LOAD	05/11/04	KLK	MRS
S	S ₁ REMOVED A; S ₂ REMOVED NOTE 5; (ENG. UPDATE)	3/30/05	DJH	MRS
T	T ₁ REVISED NOTES; T ₂ ADDED JACK DATA	8/15/06	RWN	MRS



- NOTES:**
- FINISH:
 - 1.1 PRIMER: 1-COAT PER TT-P-636 (RED OXIDE), UNLESS OTHERWISE SPECIFIED ON SALES ORDER.
 - 1.3 FINISH PER SALES ORDER.
 - 1.4 PRIMER AND PAINT UNIT IN RETRACTED POSITION.
 - GREASE PER CIGNYS LUBE SPEC DOC 413-23. PACK BEARINGS, AND COAT SCREW & NUT. SPRAY CONTACT PORTION OF INNER TUBE WITH LUBRIBOND 220 PRIOR TO ASSY.
 - PLATING: ALL EXTERIOR HARDWARE ITEMS ZINC PLATE PER ASTM B-633-85, CLASS FE/ZN (.0002 THK.) TUPE III (CLEAR)
- FURNISH 12" CRANK UNLESS OTHERWISE SPECIFIED.**
- ADJUSTABLE CLAMP BRACKET MAY BE ADJUSTED ALONG ENTIRE LENGTH OF TUBE TOWARD GEAR HEAD ON -12 THRU -30 MODELS.**
- JACK DATA:**
- 14.6 REVS. INPUT FOR 1 INCH OF STROKE
 - 25,000 LB MAXIMUM STATIC COMPRESSION TO YIELD
 - APPROX. 380 INCH LB. TORQUE INPUT AT MAXIMUM OPERATING LOAD

ITEM #	PART NUMBER	QTY	DESCRIPTION	MATERIAL OR NOTE	SPECIFICATION
29	07-038290	1	TAG, WARNING	(WIRE TO BRACKET HOLE)	
28	LL 1/4 X 1 3/4 GP	1	GROOVE PIN	1/4 DIA. X 1 3/4" LG	MS35671-57
27	07-014468	1	NAMEPLATE		
26	07-031014	1	BRACKET CLAMP		
25	07-007578-14P	1	THRUST COLLAR		
24	07-007578-2E	1	GEAR, BEVEL		
23	LL 5/16 X 2 1/4	1	PIN, ROLL	5/16 DIA. X 2 1/4" LG	MS09048-272
22	07-048425	1	KEY, MACH. SQ.	1/4 X 1/4 X 2" LG	MS20066-258
21	1/2-13 X 1 1/4	4	SCREW, LOCK, HD. CAP.	1/2-13 X 1 1/4" LG	MS16997-142
20	07-010725	1	CAP ASSY, GEAR HOUS.		
19	07-009779	1	FLOAT ASSY		
18	07-009836	1	PAD, INNER FOOT		
17	07-034050-16	1	LOCK NUT, REG. HEX.	5/8-18	
16	01-014460	1	COVER PLATE, KEY		
15	#6-32 X 3/16 PH	2	SCREW, MACH. PAN. HD.	#6-32 X 3/16" LG	MS35225-25
14	07-031015	1	KEY		
13	GG 1/2 ML	4	WASHER, LOCK	1/2 MED.	
12	1/2-13 X 2-3/4 GRB	4	SCREW, CAP. HEX. HD.	GRADE 8 HEAT TREATED	
11	07-014235-1	1	CAP		
10	SEE CHART	1	SCREW, ACME	1 3/8-4 THD	
9	SEE CHART	1	INNER TUBE ASSY		
8	SEE CHART	1	OUTER TUBE ASSY		
7	07-0142779	1	NUT		
6	LL 3/8 X 3/4	4	PIN, SPRING	1/8 DIA. X 3/4" LG	
5	1641-B	1	FITTING, LUBE	(1/4-28 THD)	MS15001-1
4	07-007578-E	1	GEAR, PINION		
3	07-007578-18	1	WASHER, THRUST		
2	07-010582-M / -K	1	CRANK HANDLE 12" / 8"		
1	53177	1	CONE, BEARING	TIMKEN OR EQ.	

AGNYS Multifaceted & Multifunctional Manufacturing www.cignys.com

LEVELING JACK-RIGID MOUNT
10,000LB. OPERATING

CODE IDENT NO. 52793 D PART NUMBER / FILE NAME: 31010

SCALE: 1/2" DO NOT SCALE DRAWING SHEET: 1 of 1

44475-6. 8" DIA. PAD. / 36452, 10" DIA PAD / 44025, RIGID MTG PLATE REFERENCE: 36335 / 31006 / 41006 / 40945 / 35165 / 41929 / 44550