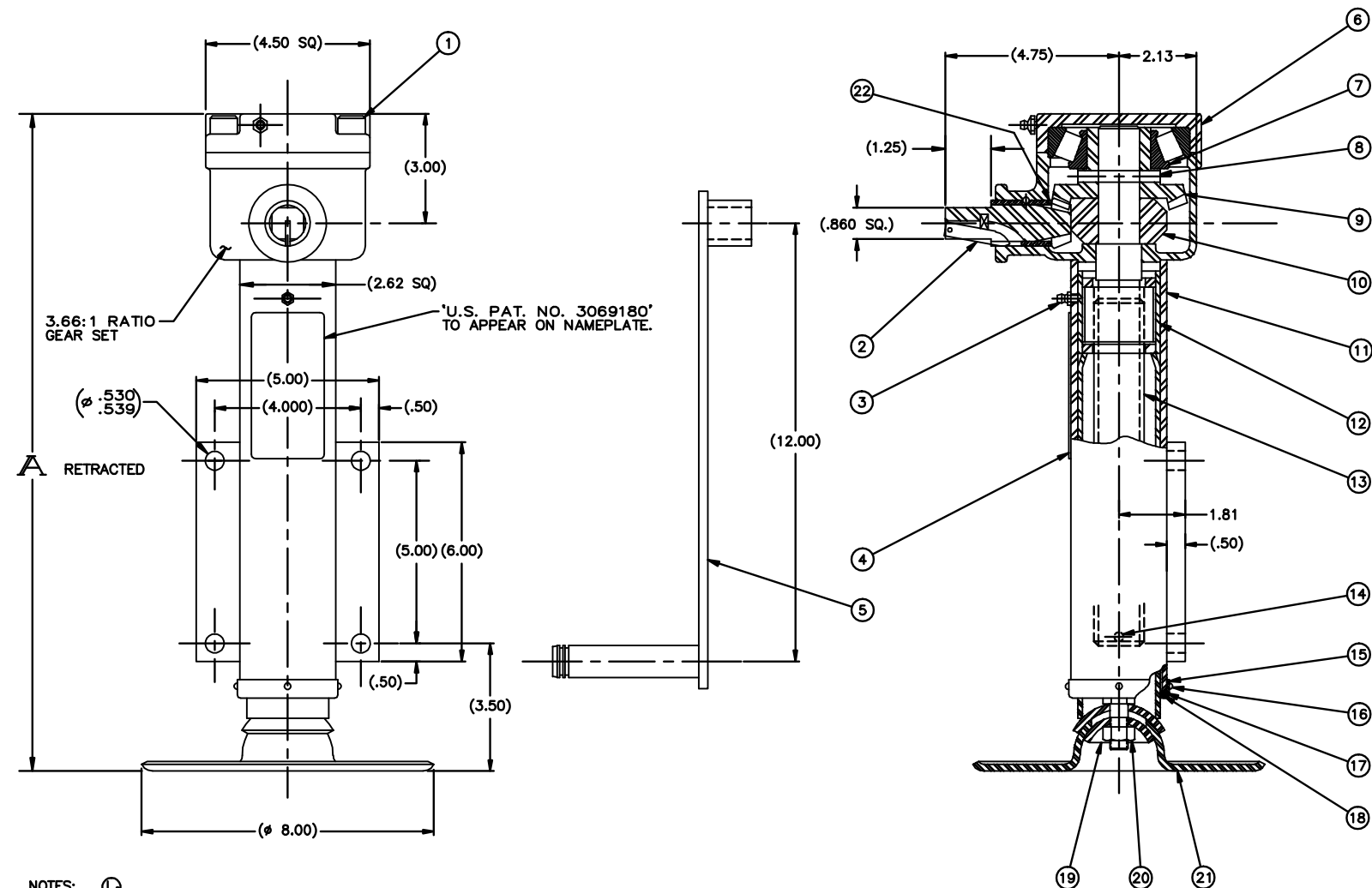


| PART NO. | STROKE | RETRACTED | OUTER TUBE ITEM 11 | INNER TUBE ITEM 12 | SCREW ITEM 13 | SIDE LOAD | WT. |
|----------|--------|-----------|--------------------|--------------------|----------------|-----------|-----|
| 31030-3 | 3 | 15 | D-07-031031-5 | C-07-018155-15 | D-07-014091-62 | 1100 | 36 |
| 31030-6 | 6 | 18 | D-07-031031-1 | C-07-018155-2 | D-07-014091-31 | 1100 | 39 |
| 31030-12 | 12 | 24 | D-07-031031-2 | C-07-018155-3 | D-07-014091-27 | 600 | 45 |
| 31030-18 | 18 | 30 | D-07-031031-3 | C-07-018155-4 | D-07-014091-35 | 400 | 51 |
| 31030-24 | 24 | 36 | | | | | 57 |
| 31030-30 | 30 | 42 | | | | | 63 |

| REV. | DESCRIPTION | DATE | BY | APP |
|------|--|----------|-----|-----|
| G | REDRAWN, PUT ON AUTOCAD; (ENG UPDATE) | 1/20/98 | DJH | RCW |
| H | P/N 31030-3 ADDED TO CHART | 1/24/00 | VP | RCW |
| J | ITEM 14 WAS LL 1/4 X 1 3/8, ADDED SPEC. MS35671-57 | 1/27/04 | KLK | MRS |
| K | ITEM 14 WAS LL 1/4 X 1 3/4 | 11/11/04 | DDR | MRS |
| L | L ₁ ADDED JACK DATA; L ₂ UPDATED NOTES | 8/11/06 | RWN | MRS |



- NOTES: (L)
- FINISH:
 - PRIMER: 1-COAT PER TT-P-636 (RED OXIDE), UNLESS OTHERWISE SPECIFIED ON SALES ORDER.
 - FINISH PER SALES ORDER.
 - PRIMER AND PAINT UNIT IN RETRACTED POSITION.
 - GREASE PER CIGNYS LUBE SPEC DOC 413-23. PACK BEARINGS, AND COAT SCREW & NUT. SPRAY CONTACT PORTION OF INNER TUBE WITH LUBRIBOND 220 PRIOR TO ASSY.
 - PLATING: ALL EXTERIOR HARDWARE ITEMS ZINC PLATE PER ASTM B-633-85, CLASS FE/ZN (.0002 THK.) TYPE III (CLEAR)
- (4) FURNISH 12" CRANK UNLESS OTHERWISE SPECIFIED.

- (L) JACK DATA:
- 14.6 REVS. INPUT FOR 1 INCH OF STROKE
 - 22,000 LB MAXIMUM STATIC COMPRESSION TO YIELD
 - APPROX. 285 INCH LB. TORQUE INPUT AT MAXIMUM OPERATING LOAD

| ITEM # | PART NUMBER | QTY | DESCRIPTION | MATERIAL OR NOTE | SPECIFICATION |
|--------|-------------------|-----|-------------------------|---------------------|---------------|
| 22 | 07-007578-18 | 1 | WASHER, THRUST | | 80200716 |
| 21 | 07-007672-8 | 1 | FOOT PAD | | |
| 20 | 91-034050-12 | 1 | NUT, SELF LOCKING | 1/2-20 UNC | |
| 19 | 07-007523-23A | 1 | PAD CUP, INSIDE | | |
| 18 | 07-013398 | 2 | RING, SCRAPER | | |
| 17 | 07-013397 | 1 | SEAL, JACK | | |
| 16 | #6-32 X 3/16 | 4 | SCREW, MACH. PAN. HD. | #6-32NC X 3/16 LG | MS35225-25 |
| 15 | 07-013396 | 1 | RETAINER, SEAL | | |
| 14 | LL 1/4 X 1-1/2 GP | 1 | GROOVE PIN | 1/4 DIA X 1 1/2" LG | MS35671-56 |
| 13 | SEE CHART | 1 | SCREW, ASSY | 1 3/8-4 THD | |
| 12 | SEE CHART | 1 | INNER TUBE ASSY | | |
| 11 | SEE CHART | 1 | OUTER TUBE ASSY | | |
| 10 | 07-007578-14P | 1 | THRUST COLLAR | | |
| 9 | 07-007578-2C | 1 | GEAR, BEVEL | | |
| 8 | LL 5/16 X 2-1/4 | 1 | PIN, SPRING | 5/16 DIA X 2 1/4 LG | MS09048 |
| 7 | 53117 | 1 | CONE, BEARING | TIMKEN OR EQ. | |
| 6 | 07-010725 | 1 | CAP ASSY | | |
| 5 | 07-010582-M / -K | 1 | HANDLE 12" / 8" | | |
| 4 | 07-014468 | 1 | NAME PLATE | | |
| 3 | 1641-B | 1 | FITTING LUBE | 1/4-28 THD | MS15001-1 |
| 2 | 07-007587-E | 1 | GEAR, PINION | | |
| 1 | 1/2-13 X 1-1/4 | 4 | SCREW, SOCKET HEAD, CAP | | MS16997 |

MATERIAL: SEE DETAILS

DRAWN BY: R.C. GERISH

CHECKED BY: DJH

ENGINEERING APPROVAL: MRS

DATE DRAWN: 9/23/63

CUSTOMER:

GEOMETRY CREATED IN AutoCAD

DESCRIPTION: LEVELING JACK-RIGID 7,500 LBS. OPERATING

CODE IDENT NO. 52793

SIZE D

PART NUMBER / FILE NAME: 31030

SCALE: 1/2

DO NOT SCALE DRAWING

SHEET: 1 of 1

REFERENCE: D-31033 W/RUBBER ON FOOT PAD, D-31032 WITH TUBE LOCK, D-41928-D

31030