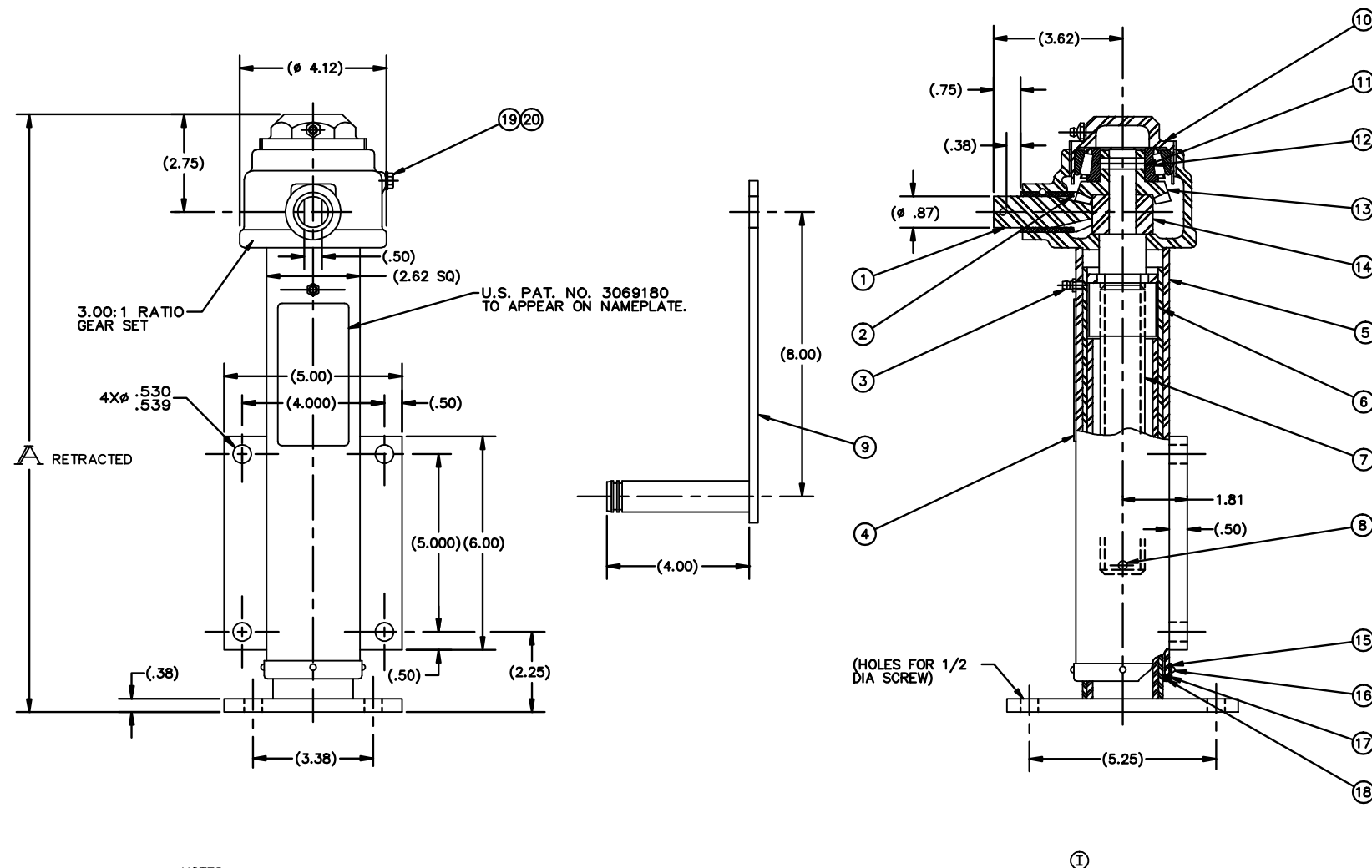


| PART NO. | STROKE | RETRACTED | OUTER TUBE ITEM 5 | INNER TUBE ITEM 6 | SCREW ITEM 7 | SIDE LOAD | WT. |
|----------|--------|-----------|-------------------|-------------------|----------------|-----------|------|
| 31048-3 | 3 | 13.62 | D-07-031603-9 | C-07-042377-1 | C-07-014313-27 | 1600 | 31.5 |
| 31048-6 | 6 | 16.62 | D-07-031603-18 | C-07-042377-2 | C-07-014313-11 | 600 | 35 |
| 31048-9 | 9 | 19.62 | D-07-031603-12 | C-07-042377-12 | C-07-014313-2 | 500 | 39 |
| 31048-12 | 12 | 22.62 | D-07-031603-19 | C-07-042377-3 | C-07-014313-12 | 450 | 42 |
| 31048-18 | 18 | 28.62 | D-07-031603-20 | C-07-042377-4 | C-07-014313-13 | 350 | 49 |
| 31048-21 | 21 | 31.62 | D-07-031603-16 | C-07-042377-8 | C-07-014313-32 | 300 | 56 |
| 31048-24 | 24 | 34.62 | D-07-031603-26 | C-07-042377-9 | C-07-014313-17 | 250 | 64 |

| REV. | DESCRIPTION | DATE | BY | APP |
|------|--|----------|-----|-----|
| F | REDRAWN & PUT ON AUTOCAD | 8/9/97 | DJH | RCW |
| G | ADDED 31048-24 | 7/8/99 | DJH | RCW |
| H | ADDED 31048-9 | 5/12/00 | BJA | RCW |
| I | NOTE REMOVED | 5/9/02 | VP | RCW |
| J | ITEM #8 WAS LL 1/4 X 1-1/2 | 10/13/04 | DDR | RCW |
| K | K ₁ REMOVED ML-P-16232; K ₂ ADDED LUBE 413-23; K ₃ ADDED I; K ₄ ADDED NOTE | 12/2/05 | DJH | MRS |
| L | ADDED JACK DATA | 8/21/06 | RWN | MRS |



- NOTES:
- Ⓚ 1. FINISH: USE SPECIFICATIONS BELOW UNLESS OTHERWISE INDICATED ON SALES ORDER.
 - Ⓚ 1.1. PHOS COAT PER TT-C-490, TYPE I OR III.
 - 1.2. PRIMER: 1-COAT PER TT-P-636 (RED OXIDE).
 - Ⓚ 1.3. ENAMEL: ONLY WHEN SPECIFIED ON ORDER
 - Ⓚ 1.4. PRIME AND PAINT UNIT IN RETRACTED POSITION, THEN EXTEND UNIT AND SPRAY CONTACT PORTION OF INNER TUBE WITH LUBRIBOND 220.
 - Ⓚ 2. LUBRICATION: GREASE PER CIGNYS LUBE SPEC. DOC. 413-23. PACK BEARINGS AND COAT SCREW & NUT.
 - Ⓚ 3. PLATING: ALL EXTERIOR HARDWARE ITEMS ZINC PLATE PER ASTM B-633-85-CLASS FE/ZN 5 (.0002 IN THICK), TYPE III (CLEAR).

- Ⓚ JACK DATA:
- 1. 12 REVS. INPUT FOR 1 INCH OF STROKE
 - 2. 15,000 LB MAXIMUM STATIC COMPRESSION TO YIELD
 - 3. APPROX. 235 INCH LB. TORQUE INPUT AT MAXIMUM OPERATING LOAD

D-07-044636-6# CASTER
 D-07-044570-6# CASTER
 D-07-044435-10# CASTER
 D-07-042980-10# CASTER
 D-07-042999-10# CASTER
 D-07-042795-6# CASTER
 D-07-042577-8# CASTER
 D-07-042521-6# CASTER
 D-07-042390-8# CASTER

| ITEM # | PART NUMBER | QTY | DESCRIPTION | MATERIAL OR NOTE | SPECIFICATION |
|--------|-----------------|-----|-------------------------|-------------------|---------------|
| 20 | 1/4-20 X 3/4 | 1 | SCREW, HEX. HD. CAP | 1/4-20 X 3/4 LG | MS35291-6 |
| 19 | GG 1/4 ML | 1 | WASHER, LOCK | 1/4 MED. | MS35338-25 |
| 18 | 13398 | 2 | RING, SCRAPER | | |
| 17 | 13397 | 1 | SEAL, JACK | | |
| 16 | 6-32 X 3/16 | 4 | SCREW, MACH. PAN. HD. | #6-32NC X 3/16 LG | MS35225-25 |
| 15 | 13396 | 1 | RETAINER, SEAL | | |
| 14 | 9829 | 1 | SPACER | | |
| 13 | 9830-1 | 1 | GEAR, BEVEL | | |
| 12 | 02475 | 1 | CONE, BEARING | TIMKEN OR EQ. | |
| 11 | LL 5/16 X 1-1/8 | 1 | PIN, SPRING | ø5/16 C 1 1/8 LG | MS-9047-264 |
| 10 | 9834-A | 1 | CAP, GEAR HOUSING, ASSY | | |
| 9 | 14168-4 | 1 | HANDLE, CRANK | | |
| 8 | LL 1/4 X 1-1/4 | 1 | PIN, GROOVE | ø1/4 X 1 1/4 LG | MS35674-41 |
| 7 | SEE CHART | 1 | SCREW, ACME | 1 1/4-4 THD | |
| 6 | SEE CHART | 1 | INNER TUBE ASSY | | |
| 5 | SEE CHART | 1 | OUTER TUBE ASSY | | |
| 4 | 14468 | 1 | NAMEPLATE | | |
| 3 | 1641-B | 1 | FITTING LUBE | (1/4-28 THD) | MS15001-1 |
| 2 | 7552-7 | 1 | WASHER, THRUST | | |
| 1 | 9831 | 1 | GEAR, PINION | | |

| | | |
|---|--------------------------------------|---|
| MATERIAL: SEE DETAILS | DRAWN BY: GMS | GEOMETRY CREATED IN: AutoCAD |
| FINISH: | CHECKED BY: DJH | DESCRIPTION: LEVELING JACK-RIGID MOUNT 5,000 LBS OPERATING |
| | ENGINEERING APPROVAL: MRS | CODE IDENT NO.: 52793 |
| | DATE DRAWN: 1/20/72 | SIZE: D |
| | CUSTOMER: | PART NUMBER / FILE NAME: 31048 |
| DIMENSIONS ARE IN INCHES UNLESS OTHERWISE SPECIFIED | | |
| TOLERANCES UNLESS OTHERWISE SPECIFIED | | |
| MACHINING & STAMPING OPERATIONS | WELDMENTS & SHEET METAL FABRICATIONS | |
| FRACTION | DECIMALS | ANGULAR |
| 31/16 | .XX ± .03 | ±5 |
| | .XX ± .01 | ±1/8 |
| | .XXX ± .05 | ±1/2 |

SCALE: 1/2" = 1" DO NOT SCALE DRAWING SHEET: 1 of 1
 REFERENCE: 32195, 42544 MTG 90° FROM ABOVE CHARTED

31048