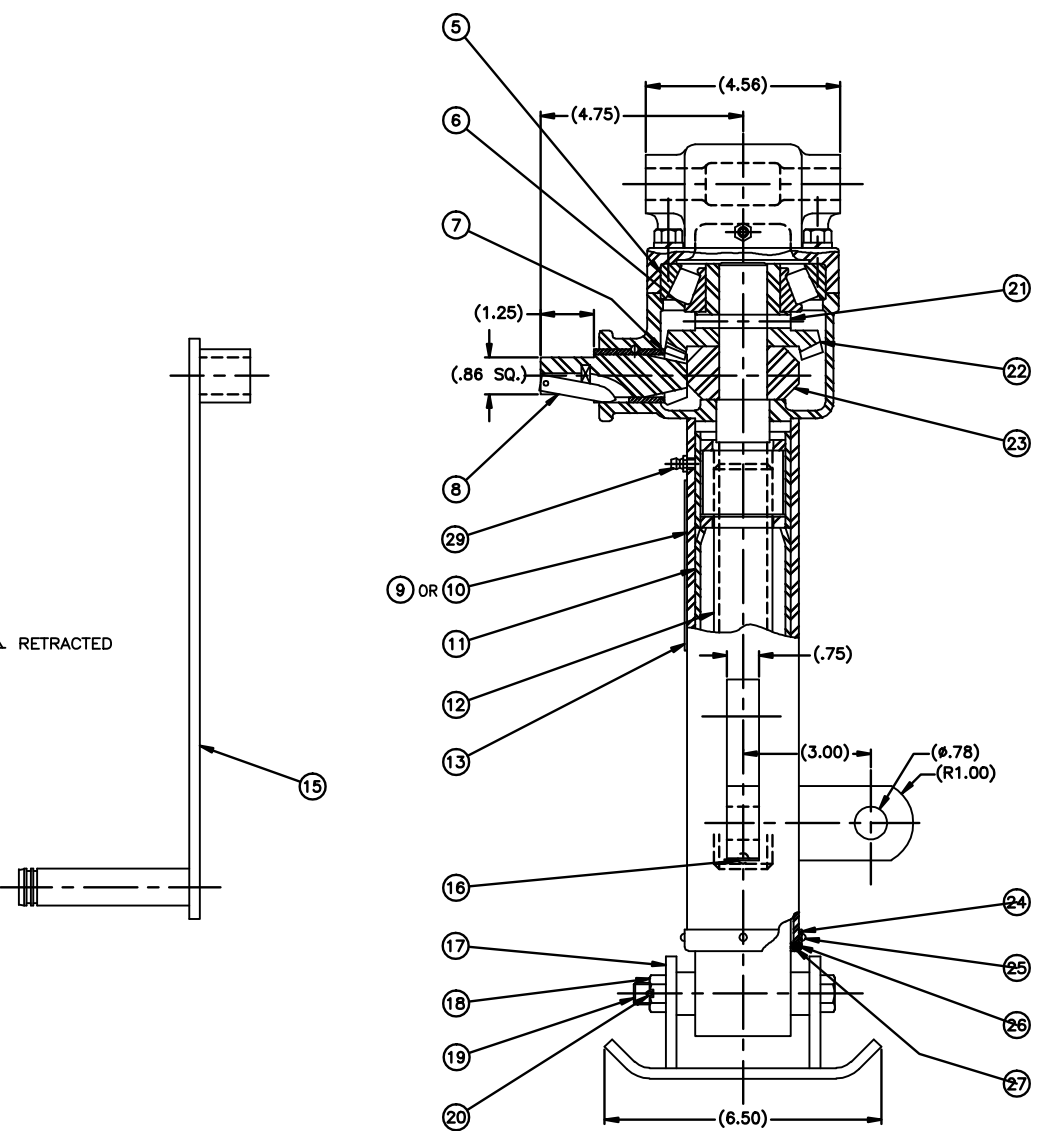
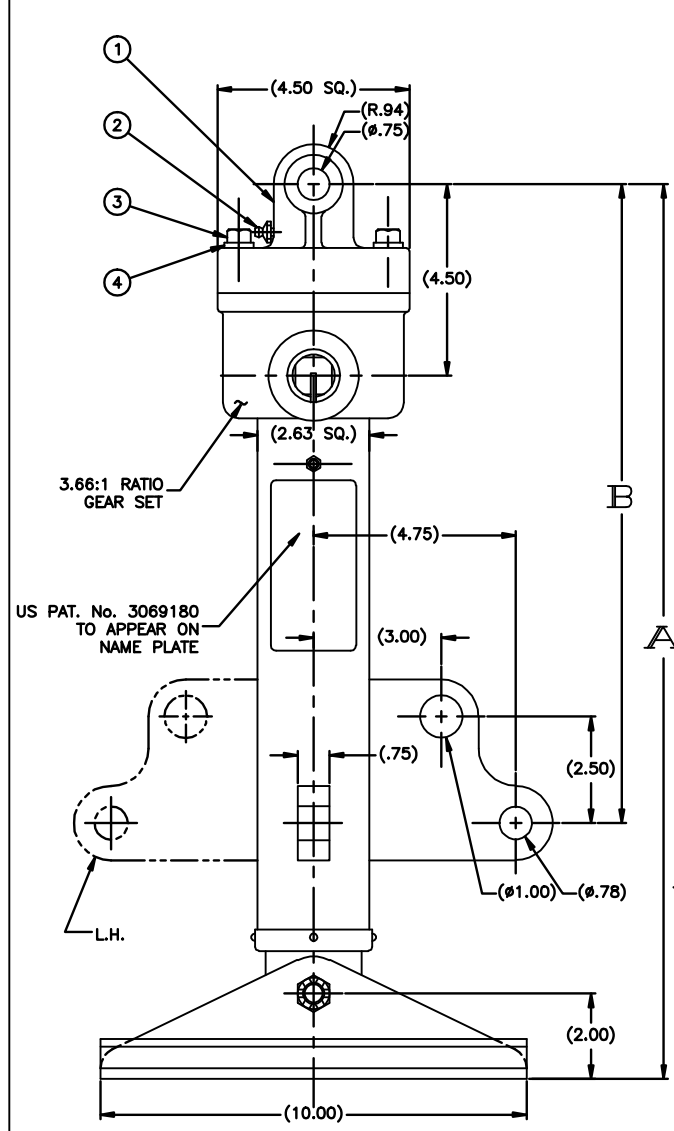


PART NO.	STROKE	RETRACTED	B	OUTER TUBE ITEM 9 L.H.	OUTER TUBE ITEM 10 R.H.	INNER TUBE ITEM 11	SCREW ITEM 12	SIDE LOAD	WT.
31020-6L 31020-6R	6	21	15	D-07-031021-2	C-07-031021-1	C-07-013430-14	D-07-014091-31	800	45
31020-12L 31020-12R	12	27	21	D-07-031021-4	C-07-031021-3	C-07-013430-15	D-07-014091-27	500	52
31020-18L 31020-18R	18	33	27	D-07-031021-6	C-07-031021-5	C-07-013430-16	D-07-014091-35	400	59

REV.	DESCRIPTION	DATE	BY	APP
F	REDRAWN AND REVISED, PUT ON CAD	8/10/09	DJH	
G	ITEM 16 WAS COMPL, 1/4 DIM. X 1/38 LG, TYPE 3	1/29/04	KLK	MRS
H	*REVISED DRAWING *UPDATED NOTES	8/11/06	RWN	MRS



- NOTES: (H)
- FINISH
 - 1.1. PRIMER: 1-COAT PER TT-P-636 (RED OXIDE), UNLESS OTHERWISE SPECIFIED ON SALES ORDER.
 - 1.2. FINISH; PER SALES ORDER.
 - 1.3. PRIMER AND PAINT UNIT IN RETRACTED POSITION.
 - GREASE PER CIGNYS LUBE SPEC DOC 413-23. PACK BEARINGS AND COAT SCREW & NUT. SPRAY CONTACT PORTION OF INNER TUBE WITH LUBRIBOND 220 PRIOR TO ASSY.
 - PLATING: ALL EXTERIOR HARDWARE ITEMS ZING PLATE PER ASTM B-633-85, FE/ZN (.0002" THK.), TYPE III (CLEAR).

- FURNISH 12" CRANK UNLESS OTHERWISE SPECIFIED.
 - IF CUSTOMER WISHES RATCHED, THIS ITEM MUST BE SPECIFIED ON PURCHASE ORDER, SEE ITEM 28.
- JACK DATA:
- 14.6 REVS. INPUT FOR 1 INCH OF STROKE
 - 22,000 LB MAXIMUM STATIC COMPRESSION TO YIELD
 - APPROX. 285 INCH LB. TORQUE INPUT AT MAXIMUM OPERATING LOAD

ITEM #	PART NUMBER	QTY	DESCRIPTION	MATERIAL OR NOTE	SPECIFICATION
29	1641-B	1	FITTING, LUBE	(1/4-28THD)	MS15001-1
28	07-034375	1	WRENCH, RATCHET	12" LONG	
27	07-013398	2	RING, SCRAPER		
26	07-13397	1	SEAL, JACK		
25	COML	4	SCREW, MACH. PAN. HD.	#6-32NC X 3/16 LG	MS35225-25
24	07-013396	1	RETAINER, SEAL		
23	07-007578-14P	1	THRUST COLLAR		
22	07-007578-2C	1	GEAR, BEVEL		
21	COML	1	PIN, SPRING	5/16 DIA. X 2 1/4 LG	MS09048-272
20	COML	1	PIN, COTTER	3/32 DIA. X 1" LG	MS24665-285
19	07-13429	1	PIN, PAD		
18	COML	1	NUT, SLOTTED, HEX.	1/2-20 UNF-2B	MS35692-822
17	07-007538-J	1	FOOD PAD ASSY		
16	LL 1/4 X 1 3/4 GP	1	GROOVE PIN	1/4 DIA. X 1 3/4" LG	MS35671-57
15	10582-M / -K	1	12" / 8" CRANK HANDLE		
14					
13	07-014468	1	NAME PLATE		
12	SEE CHART	1	SCREW ASSY		
11	SEE CHART	1	INNER TUBE ASSY		
10	SEE CHART	1	OUTER TUBE ASSY	RIGHT HAND	
9	SEE CHART	1	OUTER TUBE ASSY	LEFT HAND	
8	07-007578-E	1	GEAR, PINION		
7	07-007578-18	1	WASHER, THRUST		
6	53177	1	CONE, BEARING	TIMKEN OR EQ.	
5	53387	1	CUP, BEARING	TIMKEN OR EQ.	
4	COML	4	WASHER, LOCK	1/2 MED.	MS35338-29
3	COML	4	SCREW, CAP, HEX. HD.	1/2-13 X 1 3/4	MS35291-114
2	1610-BL	1	FITTING LUBE	1/8 PIPE THREAD	MS15003-1
1	07-007578-22	1	CAP, HOUSING		

31020 R SHOWN

MATERIAL:		DRAWN BY: R.C. GERISH		GEOMETRY CREATED IN AutoCAD	
CHECKED BY:		ENGINEERING APPROVAL: MRS			
DATE DRAWN: 10/16/63		CUSTOMER:			
DESCRIPTION: (FH) LEVELING JACK-STOWAGE 7,500 LB. OPERATING					
DIMENSIONS ARE IN INCHES UNLESS OTHERWISE SPECIFIED					
TOLERANCES UNLESS OTHERWISE SPECIFIED					
MACHINING & STAMPING OPERATIONS		WELDMENTS & SHEET METAL FABRICATIONS		CODE IDENT NO. 52793	
FRACTION	DECIMALS	ANGULAR	FRACTION	DECIMALS	ANGULAR
31/16	.XX ± .03	±5	31/8	.XX ± .06	±5
	.XXX ± .01			.XXX ± .03	
	.XXX ± .005				
NEXT ASSEMBLY		USED ON:		PART NUMBER / FILE NAME: 31020	
SCALE: 1/2 DO NOT SCALE DRAWING SHEET: 1 of 1 REFERENCE:					

31020