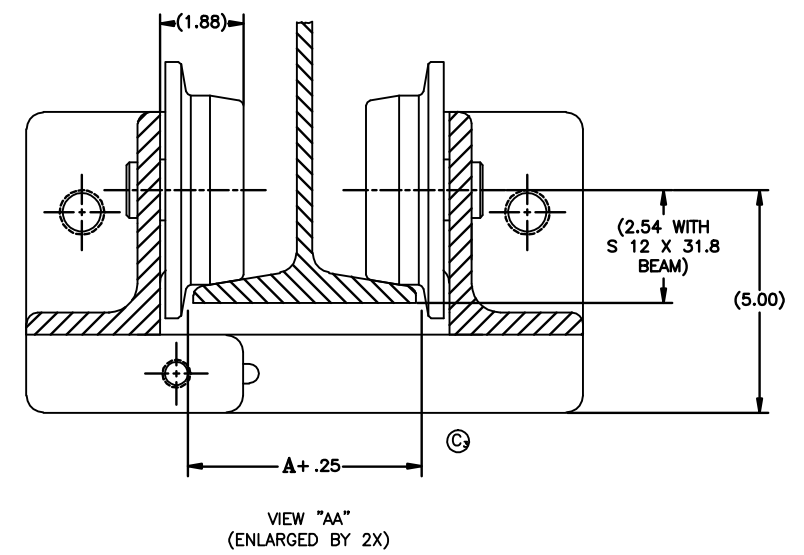
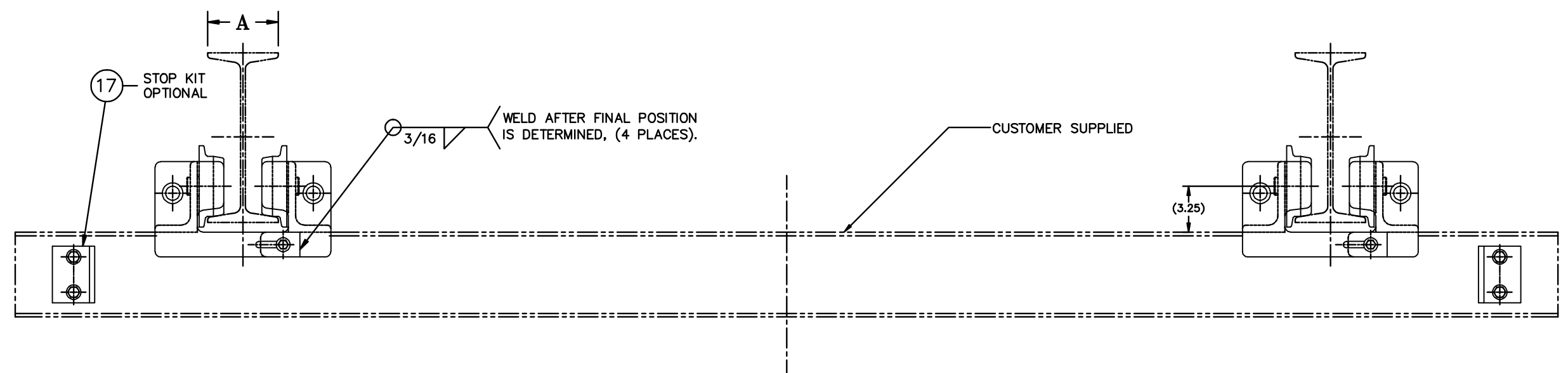
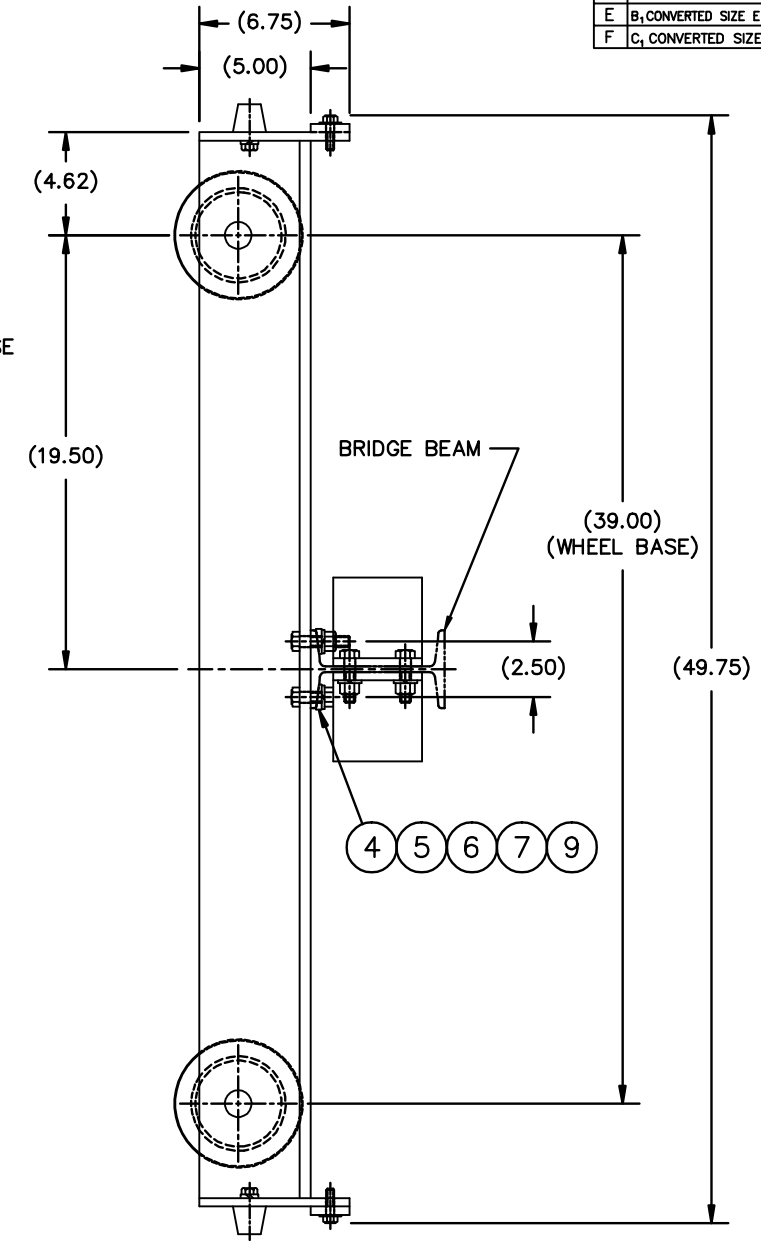
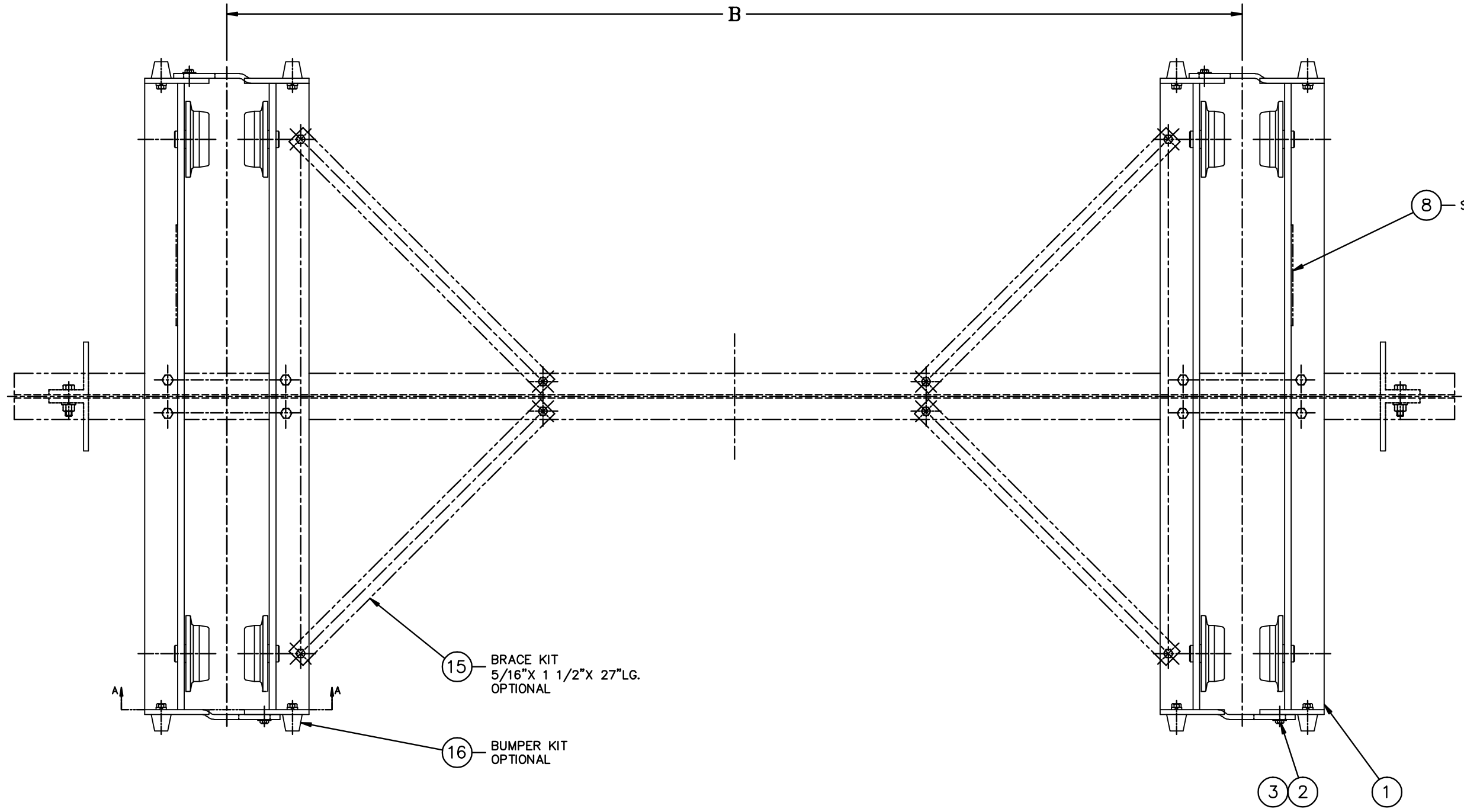


REV.	DESCRIPTION	DATE	BY	APP.
D	REDRAWN AND REVISED, PUT ON AUTOCAD	6/26/96	PJB	RCW
E	B <sub>1</sub> CONVERTED SIZE E TO D; B <sub>2</sub> ITEM 7 WAS 91151A033; B <sub>3</sub> ADDED NOTE	4/23/02	BJA	RCW
F	C <sub>1</sub> CONVERTED SIZE D TO E; C <sub>2</sub> ADDED NOTE; C <sub>3</sub> ADDED VIEW	8/21/06	RWN	MRS



- NOTES:
- TWO COATS OF FAST DRYING SAFETY YELLOW COLOR NO. 13538 OR 1310.
  - CUSTOMER TO SPECIFY CAPACITY DECAL.
  - <sup>(B)</sup> SUPPLIED IN HARDWARE KIT B-02-05447.
  - <sup>(C)</sup> BRIDGE CRANES CAN ALSO BE RUN ON W-BEAM SHAPES AND ON TOP OF BEAMS.

SEE NOTE #2

44714	2	4,000 POUND DECAL	(2 TON)	
44713	2	3,000 POUND DECAL	(1 1/2 TON)	
44712	2	2,000 POUND DECAL	(1 TON)	
44711	2	1,000 POUND DECAL	(1/2 TON)	
44710	2	500 POUND DECAL	(1/4 TON)	

17	40840	1	SAFETY STOP KIT	OPTIONAL
16	44601	1	BUMPER KIT	OPTIONAL
15	44596	1	BRACE KIT	OPTIONAL

9	6620-11	8	FLAT WASHER	.546 X 1.203 X #11GA. THK.	
8	47948	2	NAMEPLATE		
7	GG 1/2 BEVEL	8	BEVEL WASHER	1/2 BOLT SIZE	McMASTER-CARR OR EQ.
6	COML	8	HEX. HD. SCREW	1/2-13 X 2-1/4	GRADE #5 OR #6
5	COML	8	LOCK WASHER	1/2 MED.	
4	COML	8	HEX. NUT	1/2-13	
3	COML	4	HEX. HD. SCREW	3/8-16 X 1-1/4	GRADE #5
2	COML	4	FLAT WASHER	3/8	
1	47903	4	SIDE ANGLE ASSEMBLY		

		BEAM CHART (S-BEAMS)											
B SPAN		10.0'	12.5'	15.0'	17.5'	20.0'	22.5'	25.0'	27.5'	30.0'			
LOAD	500#	6 I X 12.5#	6 I X 12.5#	6 I X 12.5#	6 I X 12.5#	6 I X 12.5#	6 I X 12.5#	7 I X 15.3#	7 I X 15.3#	7 I X 20.0#			
	1000#	6 I X 12.5#	7 I X 15.3#	7 I X 15.3#	7 I X 15.3#	7 I X 20.0#	8 I X 18.4#	8 I X 23.0#	10 I X 25.4#	10 I X 25.4#			
	2000#	7 I X 15.3#	8 I X 18.4#	8 I X 23.0#	10 I X 25.4#	10 I X 25.4#	10 I X 35.0#	12 I X 31.8#	12 I X 31.8#	12 I X 35.0#	5.25	S 12.0 X 40.8	
	3000#	8 I X 23.0#	10 I X 25.4#	10 I X 35.0#	12 I X 31.8#	12 I X 35.0#	15 I X 42.9#	15 I X 42.9#	15 I X 42.9#	15 I X 42.9#	5.00	S 12.0 X 31.8	
	4000#	10 I X 25.4#	10 I X 35.0#	12 I X 31.8#	15 I X 42.9#	15 I X 42.9#	15 I X 42.9#	15 I X 42.9#	18 I X 54.7#	18 I X 54.7#	3.33	S 6.0 X 12.5	

THIS DRAWING AND THE SHEET METAL ILLUSTRATED IS THE PROPERTY OF CIGNYS. REPRODUCTION, USE BY ANY OTHER PARTY OR THE MANUFACTURE OF SUBJECT MATTER ELECTRICALLY OR BY OTHER MEANS WITHOUT THE EXPRESS WRITTEN AUTHORIZATION OF CIGNYS.

MACHINING & STAMPING OPERATIONS: FRACTION 2/16, DECIMALS ± .03, ANGULAR 25°. WELDMENTS & SHEET METAL FABRICATIONS: FRACTION 2/16, DECIMALS ± .03, ANGULAR 25°.

CODE IDENT NO. 52793 E PART NUMBER / FILE NAME: 44600

SCALE: 1/4" = 1'-0" DO NOT SCALE DRAWING SHEET: 1 of 1 CHARTED

WEIGHT: 280 LBS REFERENCE: 48498, 44525, 46758, 47905

44600