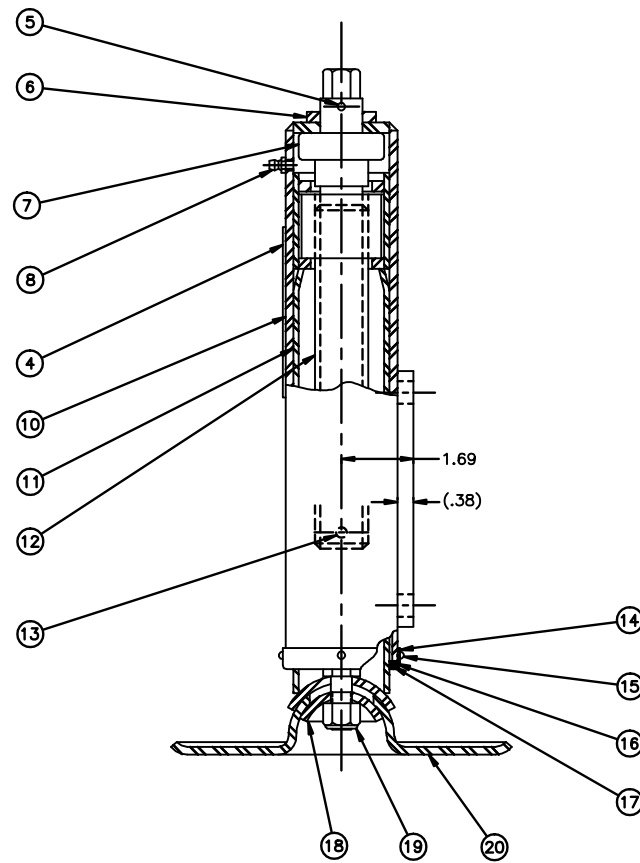
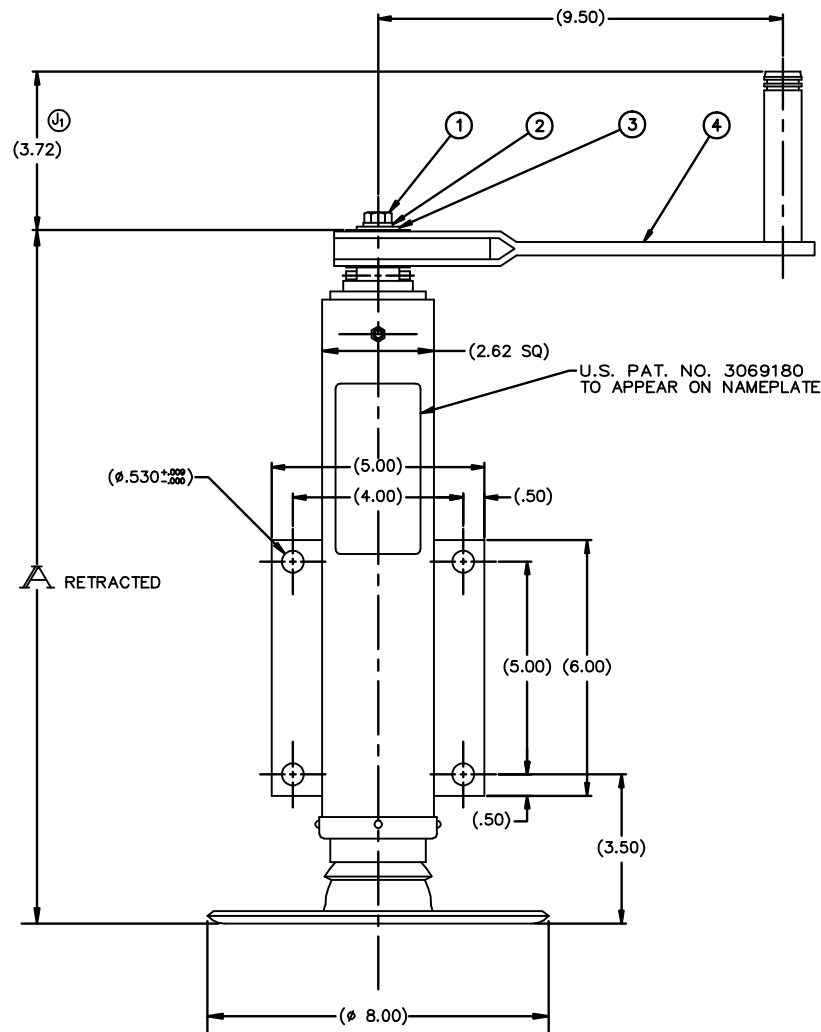


PART NO.	STROKE	RETRACTED	OUTER TUBE ITEM 10	INNER TUBE ITEM 11	SCREW ITEM 12	SIDE LOAD	WT.
31050-6	6	16	C-07-031052-1	D-07-014085-17	C-07-017486-5	1200	23
31050-12	12	22	C-07-031052-2	D-07-014085-18	C-07-017486-6	700	28.5
31050-18	18	28	C-07-031052-3	D-07-014085-19	C-07-017486-7	500	34
31050-24	24	34	C-07-031052-26	D-07-014085-36	C-07-017486-18	300	39.5
31050-28	28	38	C-07-031052-24	D-07-014085-34	C-07-017486-24	100	43.2
31050-30	30	40	C-07-031052-	D-07-014085-	C-07-017486-	50	45

REV.	DESCRIPTION	DATE	BY	APP
H	PUT ON AUTOCAD; (ENG UPDATE)	10/10/96	DJH	RCW
J	* 3.72 WAS 3.25; * OUTER TUBE C-07-031052-26 WAS C-07-031052-; * INNER TUBE D-07-014085 WAS D-07-014085-; * REMOVED PHOS COAT NOTE	5/1/03	KLK	RCW
K	K ₁ UPDATED NOTES; K ₂ ADDED JACK DATA	8/14/06	RWN	MRS



- NOTES:
- (K₁) 1. FINISH:
- 1.1 PRIMER: 1-COAT PER TT-P-636 (RED OXIDE), UNLESS OTHERWISE SPECIFIED ON SALES ORDER.
 - 1.2 FINISH PER SALES ORDER.
 - 1.3 PRIMER AND PAINT UNIT IN RETRACTED POSITION.
2. GREASE PER CIGNYS LUBE SPEC DOC 413-23. PACK BEARINGS, AND COAT SCREW & NUT. SPRAY CONTACT PORTION OF INNER TUBE WITH LUBRIBOND 220 PRIOR TO ASSY.
3. PLATING: ALL EXTERIOR HARDWARE ITEMS ZINC PLATE PER ASTM B-633-85, CLASS FE/ZN (.0002 THK.) TYPE III (CLEAR)
4. THIS JACK THE SAME AS 07-044013 EXCEPT FOR RATCHET WRENCH.

- (K₂) JACK DATA:
- 1. 4 REVS. INPUT FOR 1 INCH OF STROKE
 - 2. 4,000 LB MAXIMUM STATIC COMPRESSION TO YIELD
 - 3. APPROX. 240 INCH LB. TORQUE INPUT AT MAXIMUM OPERATING LOAD

ITEM #	PART NUMBER	QTY	DESCRIPTION	MATERIAL OR NOTE	SPECIFICATION
20	07-007672	1	PAD, FOOT		
19	91-034050-12	1	NUT, SELF LOCKING	1/2-20 UNF	
18	07-007523-23A	1	PAD, CUP INSIDE		
17	07-013398	2	RING SCRAPER		
16	07-013397	1	SEAL, JACK		
15	6-32 X 3/16	4	SCREW, MACH. PAN. HD.	#6-32NC X 3/16 LG	MS35225-25
14	07-013396	1	RETAINER, SEAL		
13	LL 1/4 X 1-1/4	1	PIN, GROOVE	1/4 DIA. X 1 1/4 LG	MS35674-41
12	SEE CHART	1	SCREW, ACME	1 1/4-4 THD	
11	SEE CHART	1	INNER TUBE ASSY		
10	SEE CHART	1	OUTER TUBE ASSY		
9	07-014468	1	NAMEPLATE		
8	1641-B	1	FITTING, LUBE	(1/4-28 THD)	MS151001-1
7	T-101	1	BEARING, THRUST	TIMKEN OR EQ.	
6	07-014468	1	WASHER, THRUST		
5	LL 3/16 X 1-1/2	1	PIN, SPRING	3/16 DIA. X 1 1/2 LG	MS09048-174
4	07-042581-1	1	HANDLE, CRANK	OPT. C-31051	
3	GG 3/8 PL	1	WASHER, FLAT	3/8 MED.	MS27183-15
2	GG 3/8 ML	1	WASHER, LOCK	3/8 MED.	MS35338-46
1	3/8-24 X 3/4	1	SCREW, HEX. HD. CAP	3/8-24 X 3/4 LG	MS35292-58

MATERIAL: SEE DETAILS		DRAWN BY: RC GERISH		GEOMETRY CREATED IN AutoCAD	
FINISH:		CHECKED BY: DJH		DESCRIPTION: LEVELING JACK-RIGID MOUNT 1,800 LBS OPERATING	
		ENGINEERING APPROVAL: MRS		CODE IDENT NO. 52793	
		DATE DRAWN: 9/25/63		SIZE: D	
		CUSTOMER:		PART NUMBER / FILE NAME: 31050	
DIMENSIONS ARE IN INCHES UNLESS OTHERWISE SPECIFIED					
TOLERANCES UNLESS OTHERWISE SPECIFIED					
MACHINING & STAMPING OPERATIONS		WELDMENTS & SHEET METAL FABRICATIONS		SCALE: 1/2	
FRACTION	DECIMALS	ANGULAR	FRACTION	DECIMALS	ANGULAR
31/16	.XX ± .03	± 5'	31/8	.XXX ± .03	± 3'
	.XX ± .01				
	.XXX ± .005				
DO NOT SCALE DRAWING					
SHEET: 1 of 1					