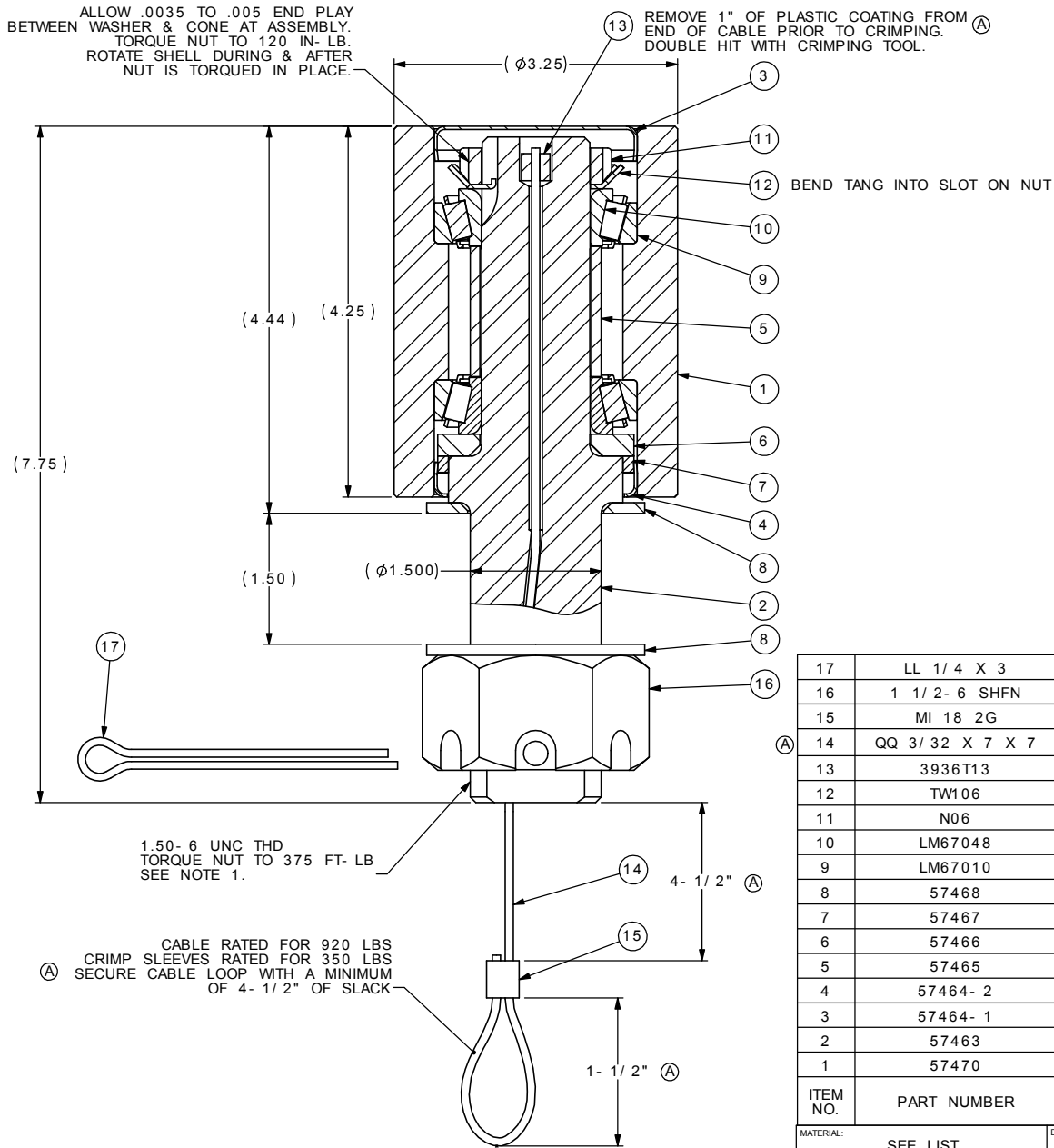


ALLOW .0035 TO .005 END PLAY BETWEEN WASHER & CONE AT ASSEMBLY. TORQUE NUT TO 120 IN-LB. ROTATE SHELL DURING & AFTER NUT IS TORQUED IN PLACE.



REVISIONS				
REV.	DESCRIPTION	DATE	BY	APP
A	ADDED NOTES & UPDATED CABLE DIMENSIONS, ITEM 14 WAS 15" LONG.	2/20/2006	TPC	MRS

NOTES:

1. INSTALL CAM ROLLER ASSEMBLY IN POSITION & HAND TIGHTEN NUT. PUSH CAM ROLLER AGAINST THE MOUNTING HOLE SURFACE IN THE DIRECTION OF THE ACTUATING FORCE. TORQUE NUT AS SPECIFIED.
2. MOUNTING HOLE SHOULD BE 1.531" MAX.
3. PACK BEARINGS WITH GREASE PER LUBE SPEC. DOC. 413-07.
4. MAX. SERVICE TEMPERATURE 150°F.

RATED LOAD = 2000 LBS  
AT 2.22" FROM END OF ROLLER

ITEM NO.	PART NUMBER	QTY.	DESCRIPTION	MATERIAL OR NOTE	SPECIFICATION
17	LL 1/4 X 3	1	COTTER PIN	1/4 DIA X 3.00 LG	
16	1 1/2-6 SHFN	1	SLOTTED HEX NUT	1- 1/2 - 6 THD	
15	MI 18 2G	1	CABLE SLEEVE		
14	QQ 3/32 X 7 X 7	1	LANYARD CABLE	3/32" DIA. X 17" LG	
13	3936T13	1	STOP SLEEVE		McMASTER- CARR
12	TW106	1	BEARING LOCK WASHER		TIMKEN
11	N06	1	BEARING LOCK NUT		TIMKEN
10	LM67048	2	BEARING CONE		TIMKEN OR EQUAL
9	LM67010	2	BEARING CUP		TIMKEN OR EQUAL
8	57468	2	WASHER		
7	57467	1	FELT SEAL		
6	57466	1	WASHER		
5	57465	1	SPACER TUBE		
4	57464- 2	1	SEAL CAP		
3	57464- 1	1	SEAL CAP		
2	57463	1	ROLLER SHAFT		
1	57470	1	ROLLER SHELL		


1.50- 6 UNC THD TORQUE NUT TO 375 FT-LB SEE NOTE 1.

CABLE RATED FOR 920 LBS CRIMP SLEEVES RATED FOR 350 LBS SECURE CABLE LOOP WITH A MINIMUM OF 4- 1/2" OF SLACK

NEXT ASSEMBLY		USED ON:	

WEIGHT= 11.3LBS

\*THIS DRAWING AND THE SUBJECT MATTER ILLUSTRATED IS THE PROPERTY OF CIGNYS. THE DRAWING IS NOT TO BE COPIED IN PART OR WHOLE, DUPLICATED, REPRODUCED, USED BY PARTIES OTHER THAN CIGNYS TO MANUFACTURE THE SUBJECT MATTER ILLUSTRATED, OR SUBMITTED TO OTHER PARTIES WITHOUT THE EXPRESS WRITTEN AUTHORIZATION OF CIGNYS.\*

MATERIAL: SEE LIST		DRAWN BY: TPC	 <p>Multifaceted &amp; Multifunctional Manufacturing www.cignys.com</p>
FINISH:		CHECKED BY: MRS	
		ENGINEERING APPROVAL: MRS	
		DATE DRAWN: 1/ 25/ 2006	
		CUSTOMER:	DESCRIPTION: HEAVY DUTY CAM ROLLER 2,000 LBS CAPACITY
DIMENSIONS ARE IN INCHES UNLESS OTHERWISE SPECIFIED			
TOLERANCES UNLESS OTHERWISE SPECIFIED			
MACHINING & STAMPING OPERATIONS		WELDMENTS & SHEET METAL FABRICATIONS	
FRACTION ±1/ 16	DECIMALS .X ± .03 .XX ± .01 .XXX ± .005	ANGULAR ±5°	FRACTION ±1/ 8 DECIMALS .XX ± .06 .XXX ± .03 ANGULAR ±1°
CODE IDENT NO. 52793	DWG SIZE C	PART NUMBER / FILE NAME: 57459	
SCALE: 1:1	DO NOT SCALE DRAWING		SHEET: 1 OF 1