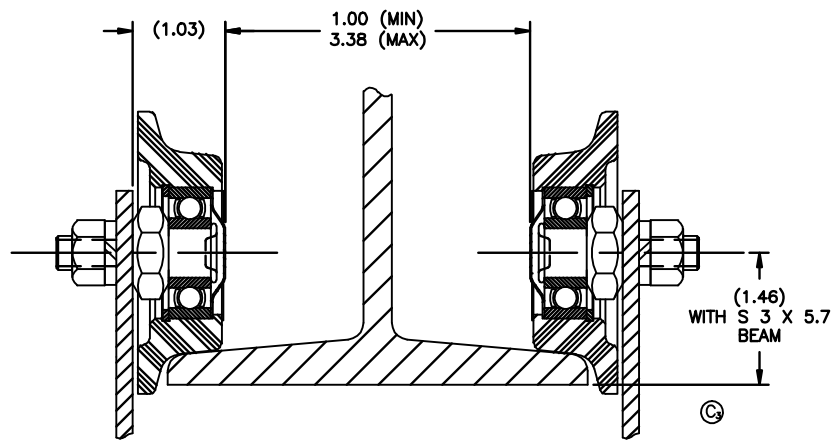
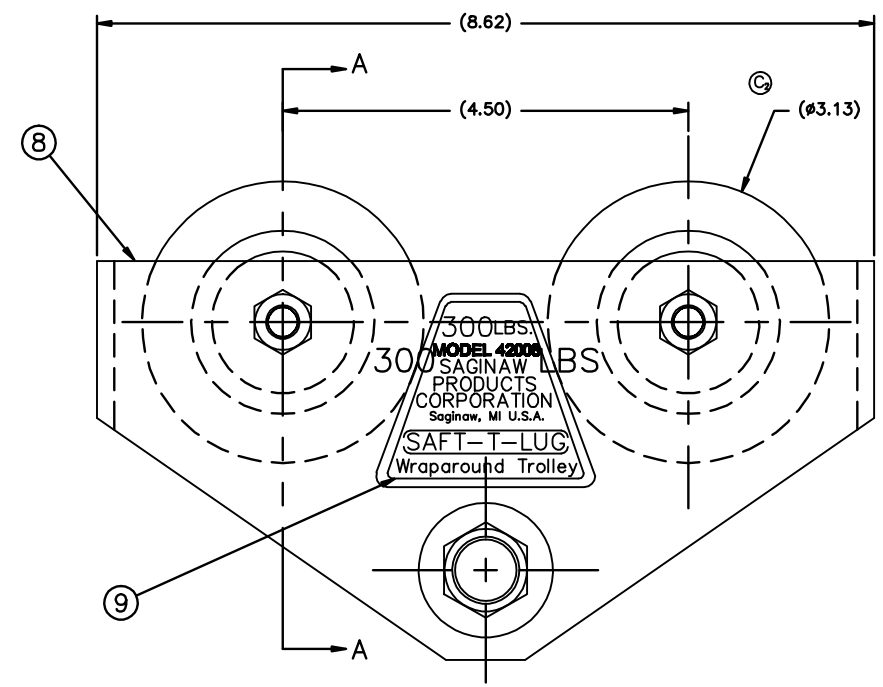
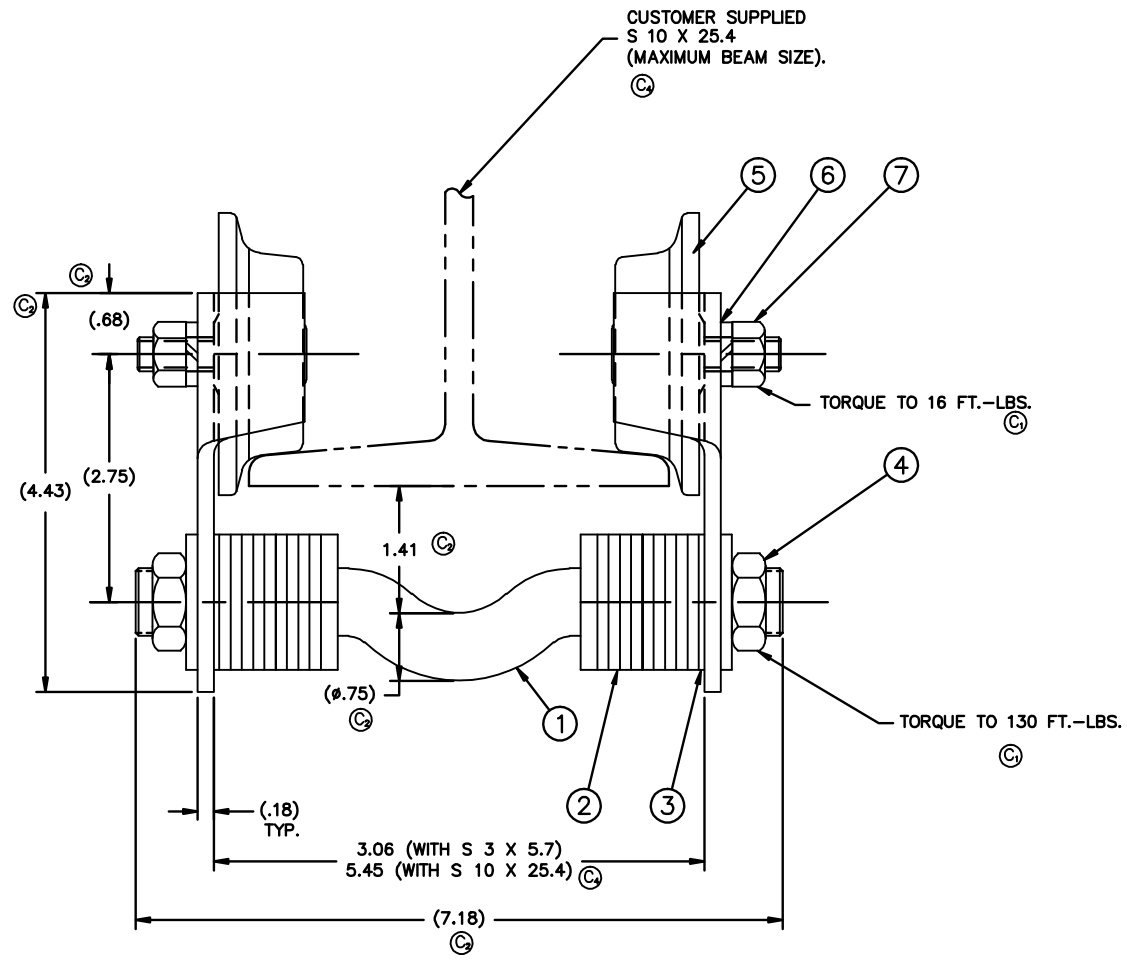


REV.	DESCRIPTION	DATE	BY	APP
B	ITEM'S 6 & 7 PART No.'S WERE COMPL.; (ENG UPDATE)	1/24/01	VP	RCW
C	C ₁ ADDED DIM/NOTE; C ₂ UPDATED DIM; C ₃ ADDED VIEW; C ₄ UPDATED NOTATION	10/18/06	RWN	MRS



VIEW "AA"
SCALE 1:1

NOTES:

1. PLACE WASHERS AND LOCKNUT ON HANGER BAR. LOCKNUT TO BE FINGER TIGHT DO NOT ASSEMBLE SIDE PLATES ON HANGER BAR.
2. ADJUSTABLE FOR 3" TO 10" I BEAM
3. MINIMUM TURN RADIUS - 18" TO CENTERLINE OF BEAM. (SEE D-10465-3 FOR LAYOUT).
4. CAN BE RUN ON S AND W BEAM SHAPES.

ITEM #	PART NUMBER	QTY	DESCRIPTION	MATERIAL OR NOTE	SPECIFICATION
9	43574	1	NAME PLATE	SELF ADHESIVE TYPE	
8	43534	2	SIDE PLATE		
7	DD 3/8-24 HFN	4	NUT, HEX JAM	3/8-24 TH'D	
6	GG 3/8 ML	4	WASHER, LOCK	3/8 REG.	
5	51455	4	TROLLEY WHEEL ASSEMBLY		
4	34050-50	2	NUT, LOCK	3/4-10	
3	14753	2	WASHER, FLAT	1 1/2 OD X 49/64 ID X 1/8 TH.	
2	7466-2C	20	WASHER, FLAT	1 1/2 OD X 49/64 ID X 1/16 TH.	
1	8920	1	HANGER BAR		

MATERIAL: SEE DETAILS		DRAWN BY: RWN	GEOMETRY CREATED IN: AutoCAD																
FINISH: PHOS COAT COMPL. QUALITY ON SIDE PLATES		CHECKED BY: MRS																	
DIMENSIONS ARE IN INCHES UNLESS OTHERWISE SPECIFIED		ENGINEERING APPROVAL: MRS																	
TOLERANCES UNLESS OTHERWISE SPECIFIED		DATE DRAWN: 10/18/06																	
NEXT ASSEMBLY		USED ON:	DESCRIPTION: HOIST TROLLEY 300 LBS. CAPACITY 2.33" - 4.66" BEAM FLANGE WIDTH																
<small>THIS DRAWING AND THE SUBJECT MATTER ILLUSTRATED IS THE PROPERTY OF CIGNYS. THE DRAWING IS NOT TO BE LOANED, IN PART OR WHOLE, DUPLICATED, REPRODUCED, USED BY PARTIES OTHER THAN CIGNYS TO MANUFACTURE THE SUBJECT MATTER ILLUSTRATED, OR SUBMITTED TO OTHER PARTIES WITHOUT THE EXPRESS WRITTEN AUTHORIZATION OF CIGNYS.</small>		<table border="1"> <tr> <th>MACHINING & STAMPING OPERATIONS</th> <th>WELDMENTS & SHEET METAL FABRICATIONS</th> </tr> <tr> <td>FRACTION: 1/16</td> <td>FRACTION: 1/8</td> </tr> <tr> <td>DECIMALS: .03</td> <td>DECIMALS: .06</td> </tr> <tr> <td>ANGULAR: ±.01</td> <td>ANGULAR: ±.03</td> </tr> <tr> <td>XXX ± .005</td> <td></td> </tr> </table>	MACHINING & STAMPING OPERATIONS	WELDMENTS & SHEET METAL FABRICATIONS	FRACTION: 1/16	FRACTION: 1/8	DECIMALS: .03	DECIMALS: .06	ANGULAR: ±.01	ANGULAR: ±.03	XXX ± .005		<table border="1"> <tr> <th>CODE IDENT NO.</th> <th>SIZE</th> <th>PART NUMBER / FILE NAME</th> </tr> <tr> <td>52793</td> <td>D</td> <td>42008</td> </tr> </table>	CODE IDENT NO.	SIZE	PART NUMBER / FILE NAME	52793	D	42008
MACHINING & STAMPING OPERATIONS	WELDMENTS & SHEET METAL FABRICATIONS																		
FRACTION: 1/16	FRACTION: 1/8																		
DECIMALS: .03	DECIMALS: .06																		
ANGULAR: ±.01	ANGULAR: ±.03																		
XXX ± .005																			
CODE IDENT NO.	SIZE	PART NUMBER / FILE NAME																	
52793	D	42008																	
SCALE: 1:1		DO NOT SCALE DRAWING																	