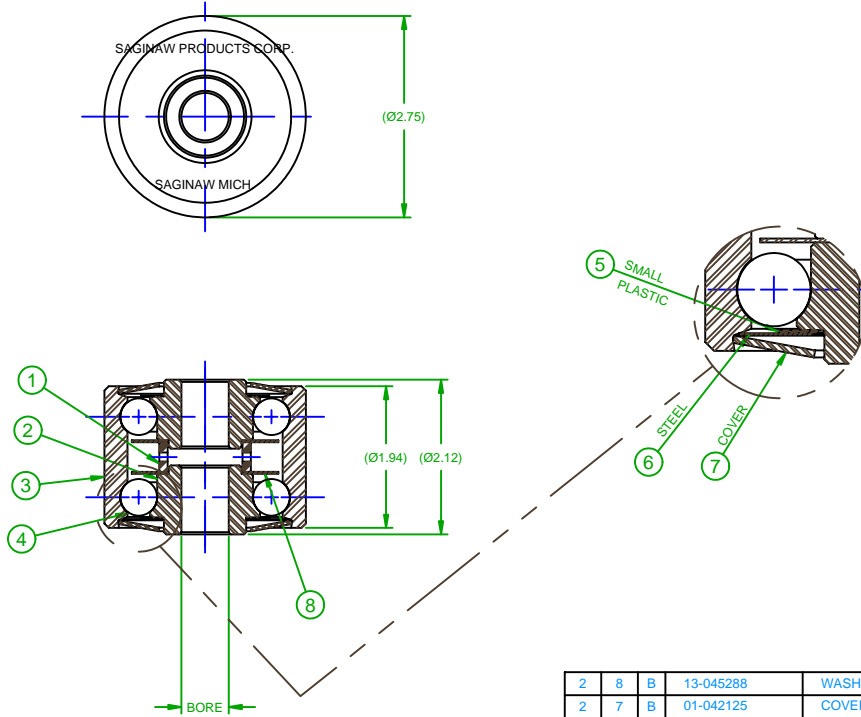


SYM	REVISIONS	DATE	APPROVED
L	1. REDRAWN TO AUTOCAD(ENG. UPDATE); 2. NOTE #1 WAS... TEXACO PREMIUM R.B. ...	10/05/00	VP/RCW



- NOTES:
- GREASE BALL RACES AT ASSEMBLY WITH SUNAPLEX 992 EP GREASE WIPE OFF EXCESS GREASE AFTER ASSEMBLY. ALSO PURGE BORE.
 - SEE SPC DOC 0291 FOR ASSEMBLY AND LUBE INSTRUCTIONS.

QTY REQD	ITEM	DWG SIZE	PART OR IDENTIFYING NO.	NOMENCLATURE OR DESCRIPTION	CODE IDENT	MATERIAL OR NOTE	SPECIFICATION
2	8	B	13-045288	WASHER			
2	7	B	01-042125	COVER			
2	6	B	01-042124	SHIM			
2	5	B	01-042123	WASHER, PLASTIC			
22	4	~	COML	BALL, STEEL, CARBON		1/2 DIA. GRADE 1000	
1	3	C	13-041448-5	SHELL			
2	2	C	SEE CHART	CONE			
1	1	C	13-044227-5	TUBE			

PART No.	BORE	ITEM 2 (CONE)	REMARKS	NEXT ASSY	USED ON	QTY
13-008793-4	.765	13-044226-4				
13-008793-3	.640	13-044226-3				
13-008793-2	.578	13-044226-2				
13-008793-1	.515	13-044226-1				

UNLESS OTHERWISE SPECIFIED DIMENSIONS ARE IN INCHES		DRAWN BY	ALM
TOLERANCES FRACTION: 1/16, .001, .002, .005, .010 DECIMALS: .001, .002, .005, .010 ANGLES: ± 1°		CHECKED BY	G.M.S.
MATERIAL		ENGR APPROVAL	
SEE LIST		CHIEF ENGR APPROVAL	RCW
FINISH		ORD DATE DRAWN	7-26-45
		SCALE	FULL
		CHARTED	

SAGINAW PRODUCTS CORPORATION

ROLLER TURN ROLLER

FILE NAME: 8793.DWG

CODE IDENT NO: 52793

DWG SIZE: C

13-008793

SHEET

13-008793

G-3112 CHARTED