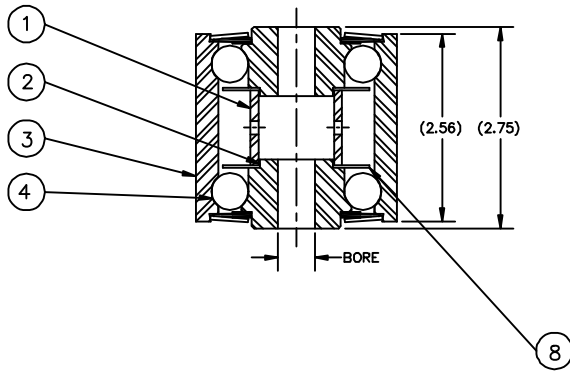
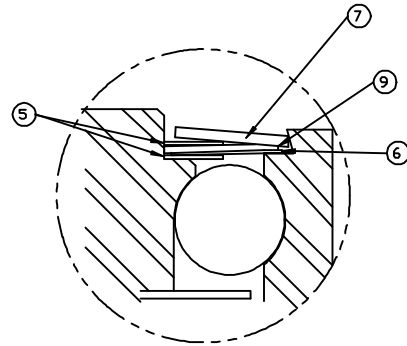
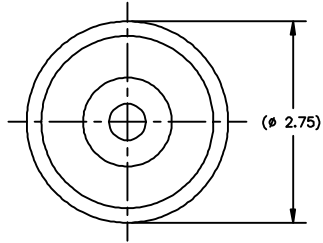


SYM	REVISIONS	DATE	DWG BY/APP
A	WAS 2	20OCT05	MRS



- NOTES:
- ROLLER TO BE LUBRICATED AT ASSEMBLY WITH GREASE SPEC 413-8. FILL BALL AREA ONLY TO 70% FILL.
  - UNIT TO BE USED AT TEMPERATURES UP TO 450° F.
  - SAME AS P/N 48073 EXCEPT FOR TEFLON WASHER AND GREASE.

QTY	REQD	ITEM	DWG SIZE	PART OR IDENTIFYING NO.	NOMENCLATURE OR DESCRIPTION	CODE IDENT	MATERIAL OR NOTE	SPECIFICATION
2	9	B		57091	WASHER			
2	8	B		13-045288	WASHER			
2	7	B		01-042125	COVER			
2	6	B		01-042124	SHIM			
4	5	B		13-048114	WASHER, BRASS			
22	4	~		JJ 1/2 CB 200	BALL, STEEL, CHROME			
1	3	C		13-041448-1	SHELL			
2	2	C		SEE CHART	CONE			
1	1	C		13-044227-1	TUBE			

UNLESS OTHERWISE SPECIFIED DIMENSIONS ARE IN INCHES			DRAWN BY: MRS CHECKED BY: MRS DATE: 14OCT05 SHEET: 14OCT05	<b>Saginaw PRODUCTS CORPORATION</b> 600 MILLIKEN BLVD., SAGINAW, MICHIGAN 48606 915-793-1211 FAX 915-793-0200
FRACTION: ± 1/16 DECIMALS: ± .005 ANGLES: ± 1° TOLERANCES: ± .010	MATERIAL:		FINISH:	
HANDLING SYSTEMS			CODE IDENT NO.: 52793 SCALE: FULL	FILE NAME: 57090.DWG 57090 SHEET

PART NO.	BORE	ITEM 2 (CONE)	REMARKS	NEXT ASSY	USED ON	QTY
57090-4	.765	13-044226-4				
57090-3	.640	13-044226-3				
57090-2	.578	13-044226-2				
57090-1	.515	13-044226-1				

C-3112, 48073

13-048073