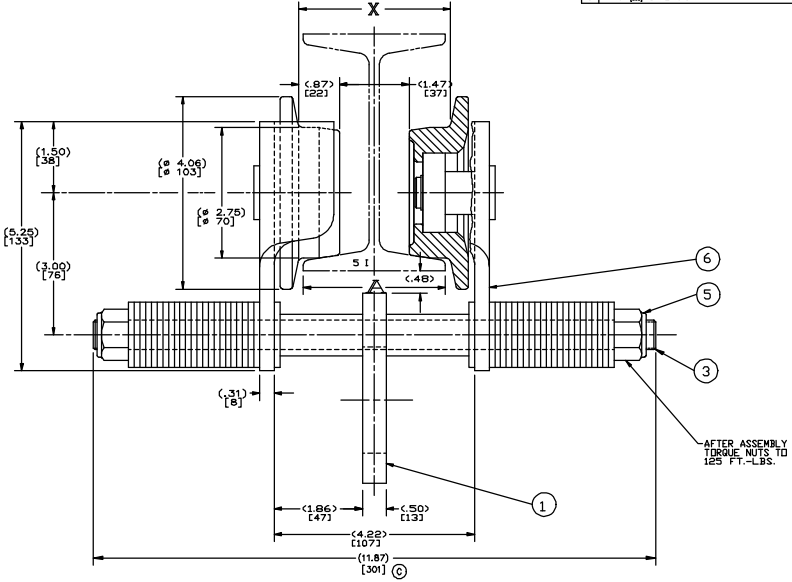
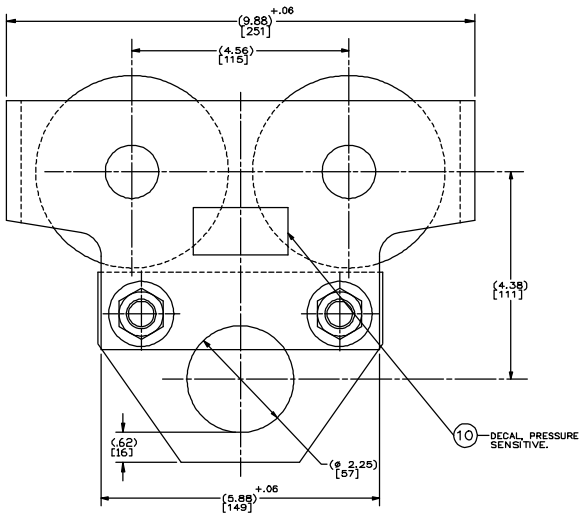


SYM	REVISIONS	DATE	APPROVED
A	REMOVED ITEMS #2, 4, 7, 8 & 9; ITEM #5 WAS 91-04050-17, 11/28/01		VP/RCW
A	ITEM #5 WAS 17-04970 (REVISED NOTE #3) (ENG. UPDATE)		
B	REVISED NOTE #3 (ENG. UPDATE)	1/05/02	KLK/RCW
C	WAS 1/2" DIMENSION	1/28/03	KLK/RCW



- NOTES:
- ASSEMBLE TROLLEY WHEELS, BEARINGS AND RETAINER RINGS TO SIDE PLATE. AFTER ASSEMBLY PAINT ALL OVER WITH GLOSS BLACK, SP 190-670, FAST DRYING ENAMEL.
 - THE HANGER SHAFT, WASHERS, SPACER TUBES, LOCK NUTS AND HANGER TO BE SHIPPED LOOSE IN A CLOTH BAG.
 - CAPACITY 2200 POUNDS, (1000 KG). (TROLLEY ULTIMATE STRENGTH MUST BE IN EXCESS OF FIVE TIMES RATED CAPACITY-11,000 POUNDS).
 - TROLLEY WHEEL OUTER TREAD TO BE CROWNED TO OPERATE ON EITHER TAPERED, OR FLAT BEAM.
 - EACH TROLLEY TO BE PACKED WITH ONE-PAGE INSTRUCTION SHEET, (TL-680-1).
 - DIMENSIONS IN [] ARE MILLIMETERS.

8 WF X 31#	(8.000) [203]	(8.183)			
(12") [305]	(5.078) [129]	(5.315)			
(5") [127]	(3.000) [76]	(3.189)			
I-BEAM	A	X	HEAT TREAT	USED ON	QTY

QTY	ITEM	DESC	PART OR IDENTIFYING NO.	NOMENCLATURE OR DESCRIPTION	CODE IDENT	MATERIAL OR NOTE	SPECIFICATION
1	10	A	17-049710	NAMEPLATE DECAL			49701-DEC
1	9						
1	8						
1	7						
2	6	C	17-053416	SIDE PLATE & WHEEL ASSEMBLY			47029-A
1	5	B	17-053417	1 TON HARDWARE			1 T HDWE
1	4						
2	3	B	17-049709	HANGER SHAFT			
1	1	C	17-049707	HANGER			

DESIGNED BY	DJH	DATE	8-28-96
CHECKED BY	DJH	DATE	8-28-96
APPROVED BY	RCW	DATE	8-28-96

FILE NAME:	D-49701
CODE IDENT NO.:	52793 D
SCALE:	FULL
EST. WT.:	25.5#
SHEET:	

D-449 MIN. RAD. LAYOUT

D-17-044301

17-049701