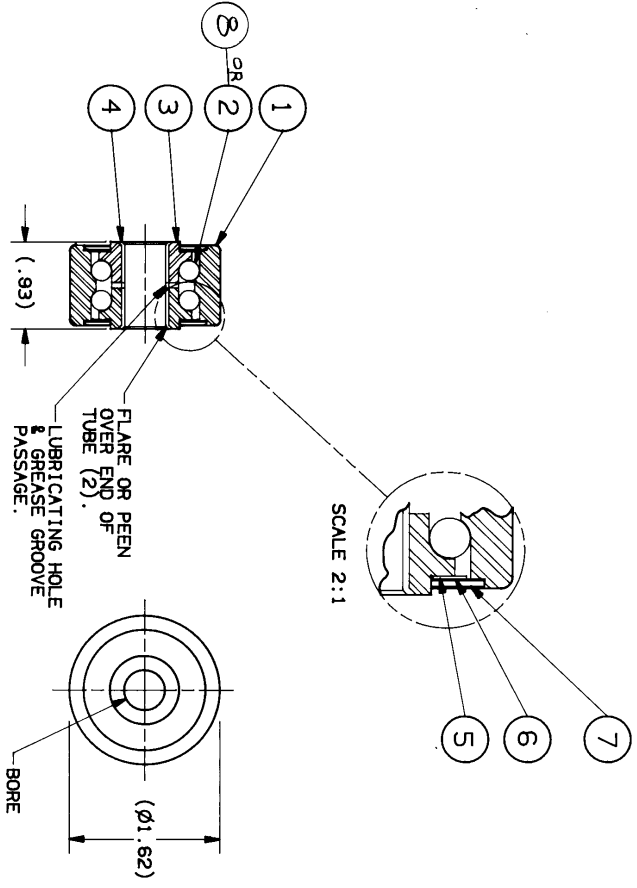


NOTICE: WHEN GOVERNMENT DRAWINGS, SPECIFICATIONS OR OTHER DATA ARE REFERENCED BY THIS DRAWING, THE UNITED STATES GOVERNMENT AND THE FACT THAT THE GOVERNMENT MAY HAVE PROVIDED FURNISHING INFORMATION IS NOT TO BE TAKEN AS AN IMPLICATION OR WARRANTY BY THE GOVERNMENT IN ANY MANNER AND NO RIGHTS OR PERMISSION TO MANUFACTURE, USE OR SELL, ANY PATENTED INVENTION HAS BEEN GRANTED BY THE UNITED STATES GOVERNMENT.



SYM	REVISIONS	DATE	APPROVED
C	REDRAWN & REVISED, PUT ON CAD	10-14-94	DJH GMS
D	ADDED CHROME STEEL BALLS		GMS
E	REMOVE CHROME STEEL BALLS, E1 440/440 WAS 438/440, E1, 502/508 WAS 500/502 E (CHROME BALLS NEVER USED ON WHEEL, E2, E3 PART WOULD BIND UP IN TUBE CAUSING WHEELS TO SEPARATE DURING ASSEMBLY)	5/21/95 9/3	GMS

NOTE:
1. COAT BALLS WITH GREASE, USE SUNPLEX 992 EP.

PART NO	DESCRIPTION	ITEM 3 (CONE)	ITEM 4 (TUBE)	USED ON	QTY
13-042736-1	Ø .502 AFTER FLARE Ø .508 OPERATION	13-042734-2	13-042741		
13-042736	Ø .440 AFTER FLARE Ø .446 OPERATION	13-042734	13-042740		

QTY	ITEM	DMG	PART OR IDENTIFYING NO.	NOMENCLATURE OR DESCRIPTION	CODE IDENT	MATERIAL OR NOTE	SPECIFICATION
1	1	B	13-042733	SHELL			
2	7	B	13-042739	COVER			
2	6	B	13-042738	SHIELD			
2	5	B	13-042737	SEAL			
1	4	B	SEE CHART	TUBE			
2	3	B	SEE CHART	CONE			
26	2	-	COML	BALL, STEEL, CARBON			7/32 DIA, GRADE 1000

UNLESS OTHERWISE SPECIFIED DIMENSIONS ARE IN INCHES

TOLERANCES DECIMALS ANGLES
 ± 1/16 X ± .005 ± 1'
 .XXX ± .010

MATERIAL

FINISH

DRAWN BY E L RENDON
 CHECKED BY C.H.S.
 ENGINEER APPROVAL
 CHIEF ENGINEER APPROVAL
 DATE DRAWN 8-29-77

SCALE 1/1

CODE IDENT. NO. 52793
 SIZE C
 CAM ROLLER WITH SEAL

Saginaw PRODUCTS CORPORATION
 98 WILLIAMSBURG, SAGINAW, MICHIGAN 48601
 917-783-1411