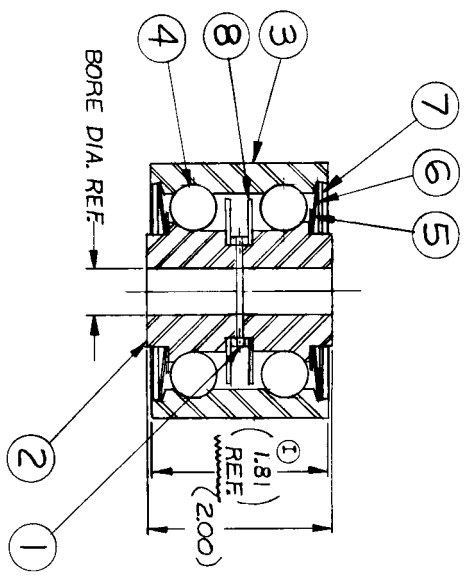
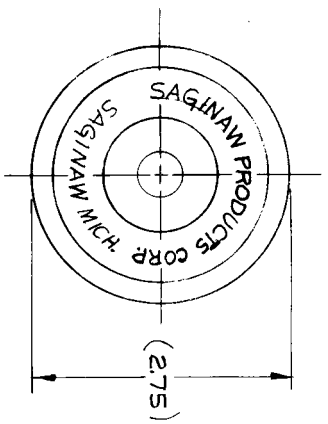


NOTICE: WHEN GOVERNMENT DRAWINGS, SPECIFICATIONS, OR OTHER DATA ARE USED IN CONNECTION WITH THE MANUFACTURE OF ANY ARTICLE, THE MANUFACTURER SHALL BE RESPONSIBLE FOR THE ACCURACY OF THE DATA AND FOR THE PROTECTION OF THE PATENT RIGHTS OF THE GOVERNMENT. THE GOVERNMENT ASSUMES NO LIABILITY FOR THE ACCURACY OF THE DATA OR FOR THE PROTECTION OF THE PATENT RIGHTS OF THE GOVERNMENT. THE GOVERNMENT ASSUMES NO LIABILITY FOR THE ACCURACY OF THE DATA OR FOR THE PROTECTION OF THE PATENT RIGHTS OF THE GOVERNMENT. THE GOVERNMENT ASSUMES NO LIABILITY FOR THE ACCURACY OF THE DATA OR FOR THE PROTECTION OF THE PATENT RIGHTS OF THE GOVERNMENT.



NOTE:
 1. FULLY COAT BALLS AT ASSY WITH SUNAPLEX 992 E.P. GREASE. WIPE OFF EXCESS GREASE AFTER ASSY.

PART NO.	BORE	ITEM 2 (CONE)	REMARKS	USED ON	QTY
33615-4	765	44226-4			
33615-3	640	44226-3			
33615-2	578	44226-2			
33615-1	515	44226-1			

C-13-003112, C-13-003131, C-13-003132, A-3004
 C-13-003134, C-13-008793, C-13-033615.

QTY	RECD	ITEM	DMG	SIZE	PART OR IDENTIFYING NO.	NOMENCLATURE OR DESCRIPTION	CODE IDENT	MATERIAL OR NOTE	SPECIFICATION
2		8	B	-13-0452288		WASHER			
2		7	B	01-042125		COVER			
2		6	B	01-042124		SHIM			
2		5	B	01-042123		WASHER			
22		4	~	COML.		BALL, CARBON STL.		1/2 DIA. GRADE 1000	
1		3	C	01-041448-7		SHELL			
2		2	C	SEE CHART		CONE			
1		1	C	13-044227-7		TUBE			

UNLESS OTHERWISE SPECIFIED DIMENSIONS ARE IN INCHES
 FRACTION TOLERANCES ± 1/16
 DECIMALS ± .005
 ANGLES ± 1°
 SURFACE FINISH XXX ± .010

Saginaw PRODUCTS CORPORATION
 88 MILLBURN ST. SAGINAW, MICHIGAN 48601
 517-7531411

ROLLER TURN ROLLER

DATE: 9-17-64
 CODE IDENT: NO. 52793
 ONE SIZE C/13-033615
 SCALE 1/1

SYMBOL	REVISIONS	DATE	APPROVED
G	REDRAWN & REVISED	6-10-64	GMS
H	C-13-044227-7 WAS 5-13-64 44227-4 (DASH NUMBER 19/4/59)	10/4/59	GMS
I	W/RT CORRECT, ADD'D DASHING ROLLER (REDAWN)	10/4/59	GMS
	1.81 WAS 1.91 (SALES DEPT REQT)	10/4/59	GMS

13-033615

(CHARTED)