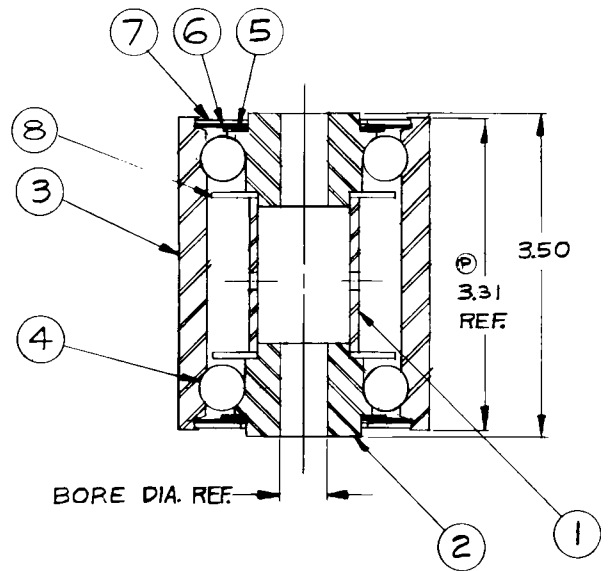
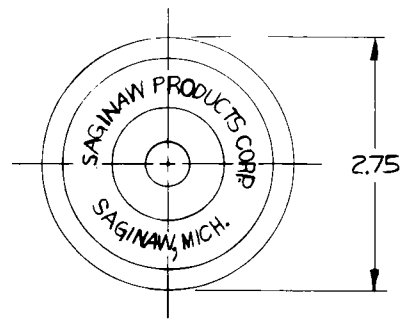


NOTICE—WHEN GOVERNMENT DRAWINGS, SPECIFICATIONS, OR OTHER DATA ARE USED FOR ANY PURPOSE OTHER THAN IN CONNECTION WITH A GOVERNMENT-RELATED GOVERNMENT PROCUREMENT OPERATION, THE UNITED STATES GOVERNMENT THEREBY INCURS NO RESPONSIBILITY FOR ANY OMISSION, WHETHER OR NOT THE FACT THAT THE GOVERNMENT MAY HAVE FORMULATED, PROMULGATED, OR IN ANY MANNER SUPPLIED THE SAID DRAWINGS, SPECIFICATIONS, OR OTHER DATA, IS NOT TO BE REGARDED BY IMPLICATION OR OTHERWISE AS IN ANY MANNER LICENSING THE HOLDER OR ANY OTHER PERSON OR CORPORATION, OR CONVEYING ANY RIGHTS OR PERMISSION TO MANUFACTURE, USE, OR SELL ANY PATENTED INVENTION THAT MAY IN ANY WAY BE RELATED THEREOF.

SYM	REVISIONS	DATE	APPROVED
N	REDRAWN & REVISED	D.J.H. 6-11-86	G.M.S.
P	B.31 WAS B.41 (SALES DEPT RENT)	3-8-91	G.M.S.



NOTE:
 1. FULLY COAT BALLS AT ASSY WITH SUNAPLEX 992 EP GREASE. WIPE OFF EXCESS GREASE AFTER ASSY.

QTY REQD	ITEM	DWG SIZE	PART OR IDENTIFYING NO.	NOMENCLATURE OR DESCRIPTION	CODE IDENT	MATERIAL OR NOTE	SPECIFICATION
2	8	B	13-045288	WASHER			
2	7	B	01-042125	COVER			
2	6	B	01-042124	SHIM			
2	5	B	01-042123	PLASTIC WASHER			
22	4	~	COML.	BALL CARBON ST'L		1/2 DIA. GRADE 1000	
1	3	C	01-041448-3	SHELL			
2	2	C	SEE CHART	CONE			
1	1	C	07-044227-3	TUBE			

UNLESS OTHERWISE SPECIFIED DIMENSIONS ARE IN INCHES		DRAWN BY MCMASTER	
FRACTION 1/16	TOLERANCES DECIMALS X + .06 XX + .03 XXX + .010	ANGLES ° 1'	CHECKED BY G.M.S.
MATERIAL		ENGR APPROVAL	
FINISH		CHIEF ENGR APPROVAL	
		DWC DATE DRAWN 3-25-46	
		CODE IDENT. NO.	DWG SIZE
		52793	C 13-003134
		SCALE 1/1	SHEET



ROLLER TURN ROLLER

PART NO.	BORE	ITEM	2 CONE	REMARKS	NEXT ASSY	USED ON	QTY
3134-4	.765	44226-4					
3134-3	.640	44226-3					
3134-2	.578	44226-2					
3134-1	.515	44226-1					

C-13-003112, C-13-003131, C-13-003132, C-13-003323, C-13-008793
 C-13-033615 REPLACES B-36599.

C-42729 CHARTED

13-003134