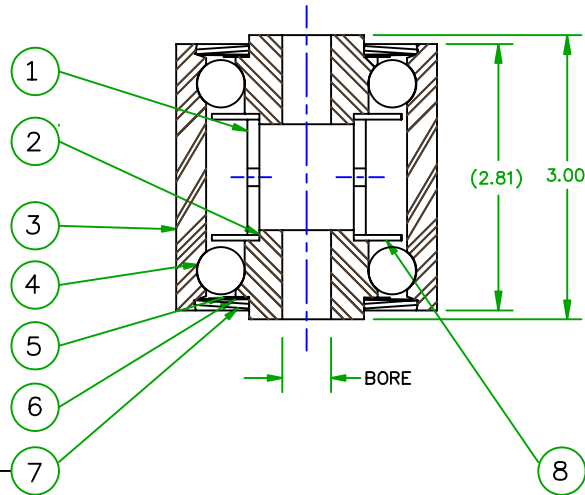
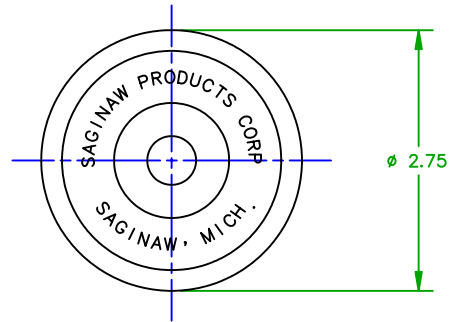


SYM	REVISIONS	DATE	DWG BY/APP
K	UPDATED AND REDRAWN IN AUTOCAD; (ENG UPDATE)	5-8-98	JCE/RCW



PRESS INTO PLACE,  
FLUSH WITH ITEM 3.

**NOTE:**

- FULLY COAT BALLS AT ASS'Y WITH SUNAPLEX 992 E.P. GREASE. WIPE OFF EXCESS GREASE AFTER ASS'Y.

QTY REQD	ITEM	DWG SIZE	PART OR IDENTIFYING NO.	NOMENCLATURE OR DESCRIPTION	CODE IDENT	MATERIAL OR NOTE	SPECIFICATION
2	8	B	13-045288	WASHER			
2	7	B	01-042125	COVER			
2	6	B	01-042124	SHIM			
2	5	B	01-042123	WASHER, PLASTIC			
22	4	~	JJ .500 SB 1000	BALL, STEEL, CARBON		1/2 DIA, GRADE 1000	
1	3	C	13-041448-6	SHELL			
2	2	C	SEE CHART	CONE			
1	1	C	13-044227-6	TUBE			

UNLESS OTHERWISE SPECIFIED DIMENSIONS ARE IN INCHES	DRAWN BY	OLZEWSKI
FRACTION ± 1/16	CHECKED BY	GMS
DECIMALS .X ± .06 .XX ± .03 .XXX ± .010	ENGR APPROVAL	
ANGLES ± 1°	CHEF ENGR APPROVAL	RCW
	ORIG DATE DRAWN	10-7-29
MATERIAL	SEE DETAILS	
FINISH		
SAGINAW PRODUCTS CORPORATION 88 WILLIAMSON ST. SAGINAW, MICHIGAN 48601 817-783-1411 FAX 817-783-4388		ROLLER TURN ROLLER
CODE IDENT NO. 52793		FILE NAME: 3132.DWG
DWG C		13-003132
SCALE FULL		SHEET

PART NO.	BORE	ITEM 2 (CONE)	REMARKS	NEXT ASSY	USED ON	QTY
13-003132-4	.765	13-044226-4				
13-003132-3	.640	13-044226-3				
13-003132-2	.578	13-044226-2				
13-003132-1	.515	13-044226-1				