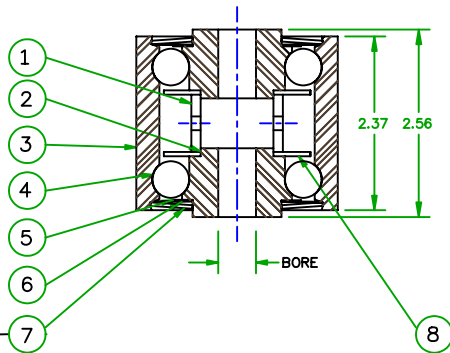
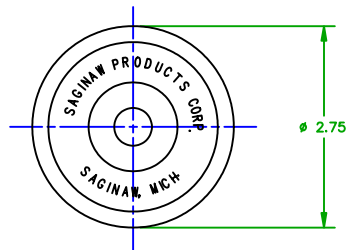


SYM	REVISIONS	DATE	DWG BY/APP
N	REDRAWN & PUT ON AUTOCAD	10/17/97	RCG/ RCW




PRESS INTO PLACE,
FLUSH WITH ITEM 3

NOTE:
1. FULLY COAT BALLS AT ASS'Y WITH SUNAPLEX 992 E.P.
GREASE. WIPE OFF EXCESS GREASE AFRER ASS'Y.

QTY	REQD	ITEM	DWG	SIZE	PART OR IDENTIFYING NO.	NOMENCLATURE OR DESCRIPTION	CODE IDENT	MATERIAL OR NOTE	SPECIFICATION
2	8	B	13-045288			WASHER			
2	7	B	01-042125			COVER			
2	6	B	01-042124			SHIM			
2	5	B	01-042123			WASHER, PLASTIC			
22	4	~	JJ .500 SB 1000			BALL, STEEL, CARBON		1/2 DIA, GRADE 1000	
1	3	C	13-041448-2			SHELL			
2	2	C	SEE CHART			CONE			
1	1	C	13-044227-2			TUBE			

13-003131-4	.765	13-044226-4				
13-003131-3	.640	13-044226-3				
13-003131-2	.578	13-044226-2				
13-003131-1	.515	13-044226-1				
PART NO.	BORE	ITEM 2 (CONE)	REMARKS	NEXT ASSY	USED ON	QTY

UNLESS OTHERWISE SPECIFIED DIMENSIONS ARE IN INCHES			DESIGNED BY	GJS
FRACTION	DECIMALS	ANGLES	CHECKED BY	GMS
* 1/16	.001	* 1°	DATE	
	.002		APPROVAL	
	.003		DATE	
	.010			
MATERIAL			RCW	
SEE DETAILS			10-8-29	
FINISH				



SAGINAW PRODUCTS CORPORATION
800 MILLBURN ST. SAGINAW, MICHIGAN 48601 915-788-1011 FAX 915-788-1000

(N) **ROLLER TURN ROLLER**
FILE NAME: 3131.DWG

CODE IDENT NO. **52793** **C** **13-003131**

SCALE **FULL** SHEET

REPLACES A-16819

REF. C-13-003112, C-13-003132, C-13-003134
 C-13-003323, C-13-008793, C-13-033615

CHARTED

13-003131