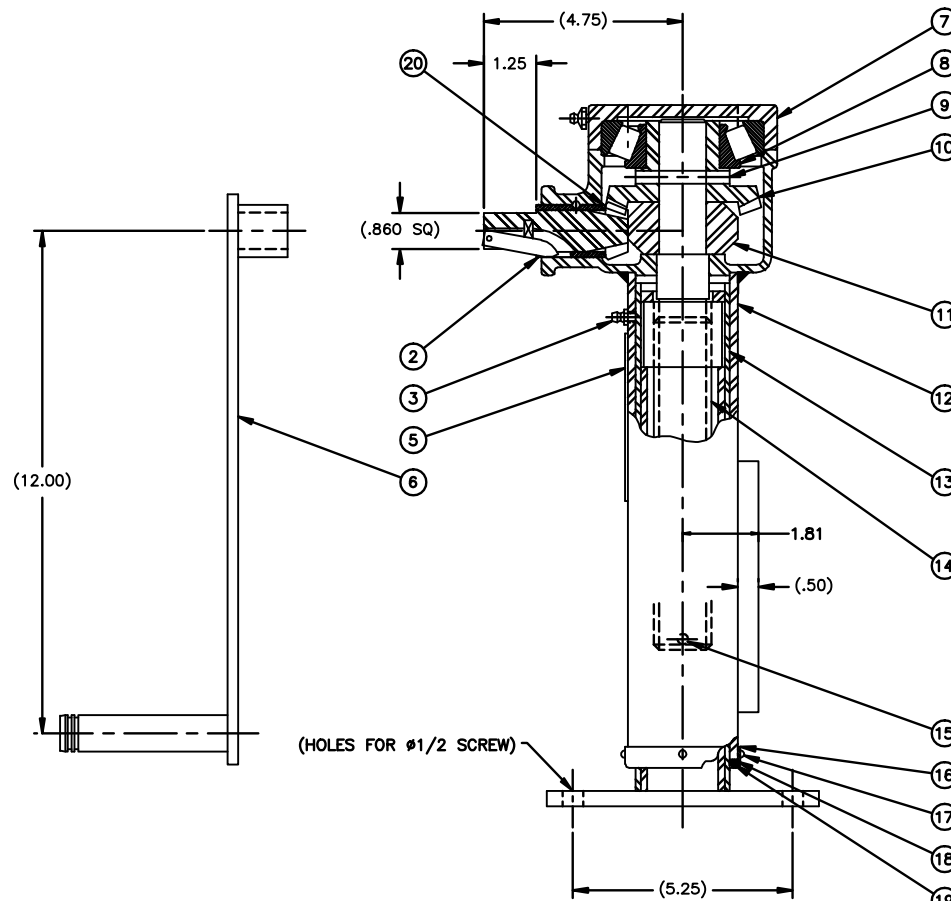
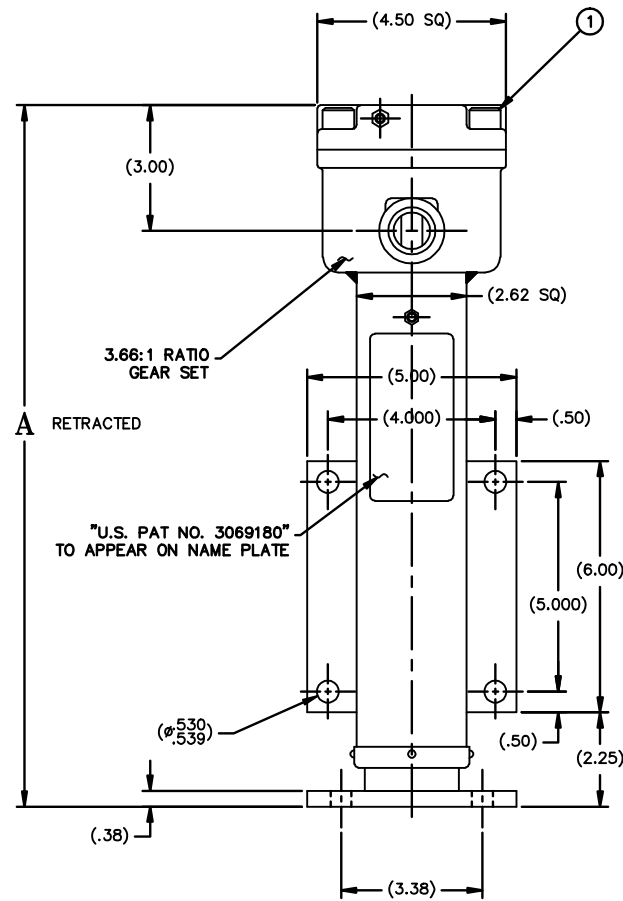


PART NO.	STROKE	A RETRACTED	OUTER TUBE ITEM #12	INNER TUBE ITEM #13	SCREW ITEM #14	SIDE LOAD	WEIGHT
31038-3	3	13.75	D-07-031031-5	C-07-043982-1	D-07-014091-41	725	37
31038-6	6	16.75	D-07-031031-1	C-07-043982-2	D-07-014091-31	600	45
31038-6WOH	6	16.75	D-07-031031-1	C-07-055678	D-07-014091-31	600	45
31038-12	12	22.75	D-07-031031-2	C-07-043982-3	D-07-014091-27	450	52
31038-18	18	28.75	D-07-031031-3	C-07-043982-4	D-07-014091-35	350	59

SYM	REVISIONS	DATE	BY	APP.
E	E, REVISED & REDRAWN ONTO AUTOCAD; E ₂ ADDED P/N 31038-6WOH.	12/09/03	KLK	MRS
F	WAS "PHOS COAT PER DOD-P-16232 TYPE Z, CLASS 1 OR TT-C-490".	12/18/03	KLK	MRS
G	ITEM 15 WAS LL 1/4 X 1 3/8, TYPE 3.	02/02/04	KLK	MRS
H	H ₁ UPDATED NOTES & REMOVED PHOS COAT; H ₂ ADDED JACK DATA	8/15/06	RWN	MRS



NOTES:

1. FINISH:

1.1 PRIMER: 1-COAT PER TT-P-636 (RED OXIDE), UNLESS OTHERWISE SPECIFIED ON SALES ORDER.

1.2 FINISH PER SALES ORDER.

1.3 PRIMER AND PAINT UNIT IN RETRACTED POSITION.

2. GREASE PER CIGNYS LUBE SPEC DOC 413-23. PACK BEARINGS, AND COAT SCREW & NUT. SPRAY CONTACT PORTION OF INNER TUBE WITH LUBRIBOND 220 PRIOR TO ASSY.

3. PLATING: ALL EXTERIOR HARDWARE ITEMS ZINC PLATE PER ASTM B-633-85, CLASS FE/ZN (.002 THK.) TYPE III (CLEAR)

4. SEE D-07-031039 FOR SAME JACK EXCEPT FOR THRUST BEARING IN GEAR HEAD (TEN. & COMP.)

A SAME AS 31038-6 LESS 4 CASTER MOUNTING HOLES IN BASE PLATE.

JACK DATA:

- 14.6 REVS. INPUT FOR 1 INCH OF STROKE
- 22,000 LB MAXIMUM STATIC COMPRESSION TO YIELD
- APPROX. 285 INCH LB. TORQUE INPUT AT MAXIMUM OPERATING LOAD

ITEM NO.	PART NO.	QTY.	DESCRIPTION	MATERIAL OR NOTE	CODE IDENT	SPECIFICATION
20	07-007578-18	1	THRUST WASHER	-	-	80200716
19	07-013398	2	SCRAPER SEAL	-	-	-
18	07-013397	1	JACK SEAL	-	-	-
17	6-32 X 3/16 PH	4	PAN HD MACHINE SCREW	#6-32NC X 3/16 LG	-	MS35225-25
16	07-013396	1	SEAL RETAINER	-	-	-
15	LL 1/4 X 1 1/2 GP	1	GROOVE PIN	#1/4 X 1 1/2 LG	-	-
14	SEE CHART	1	ACME SCREW	1 3/8-4 THD	-	-
13	SEE CHART	1	INNER TUBE WELDMENT	-	-	-
12	SEE CHART	1	OUTER TUBE WELDMENT	-	-	-
11	07-007578-14P	1	THRUST COLLAR	-	-	-
10	07-007578-2C	1	GEAR BEVEL	-	-	-
9	LL 5/16 X 2 1/4	1	SPRING PIN	#5/16 X 2 1/4 LG	-	MS09048-272
8	53177	1	CONE, BEARING	TIMKEN OR EQUAL	60038	-
7	07-010725	1	CAP ASSEMBLY	-	-	-
6	07-010882-H	1	HANDLE 12" CRANK	-	-	-
5	07-014468	1	NAME PLATE	-	-	-
4						
3	1641-B	1	LUBE FITTING	1/4-28 THD	95879	MS15001-1
2	07-007578-E	1	PINION GEAR	-	-	-
1	1/2-13 X 1 1/4 SHCS	4	SOCKET HEAD CAP SCREW	1/2-13 X 1 1/4 LG	-	MS16997-142

MATERIAL: SEE DETAILS		DRAWN BY: R. KAISER	
FINISH: SEE NOTES		CHECKED BY: GMS	
		DATE DRAWN: 2-13-73	
		CUSTOMER: -	
DIMENSIONS ARE IN INCHES UNLESS OTHERWISE SPECIFIED			
TOLERANCES UNLESS OTHERWISE SPECIFIED			
MACHINING & STAMPING OPERATIONS		WELDMENTS & SHEET METAL FABRICATIONS	
FRACTION	DECIMALS	ANGULAR	FRACTION
* 1/16	.001	* 5'	* 1/8
	.002		
	.005		
	.010		
	.015		
	.020		
	.030		
	.040		
	.050		
	.060		
	.070		
	.080		
	.090		
	.100		
	.125		
	.150		
	.175		
	.200		
	.250		
	.300		
	.375		
	.400		
	.500		
	.625		
	.750		
	.875		
	1.000		
	1.250		
	1.500		
	1.750		
	2.000		
	2.500		
	3.000		
	3.750		
	4.000		
	5.000		
	6.000		
	7.000		
	8.000		
	9.000		
	10.000		
	12.000		
	15.000		
	20.000		
	25.000		
	30.000		
	37.500		
	45.000		
	50.000		
	60.000		
	75.000		
	90.000		
	100.000		
	125.000		
	150.000		
	175.000		
	200.000		
	250.000		
	300.000		
	375.000		
	450.000		
	500.000		
	600.000		
	750.000		
	900.000		
	1000.000		
	1250.000		
	1500.000		
	1750.000		
	2000.000		
	2500.000		
	3000.000		
	3750.000		
	4500.000		
	5000.000		
	6000.000		
	7500.000		
	9000.000		
	10000.000		
	12500.000		
	15000.000		
	17500.000		
	20000.000		
	25000.000		
	30000.000		
	37500.000		
	45000.000		
	50000.000		
	60000.000		
	75000.000		
	90000.000		
	100000.000		
	125000.000		
	150000.000		
	175000.000		
	200000.000		
	250000.000		
	300000.000		
	375000.000		
	450000.000		
	500000.000		
	600000.000		
	750000.000		
	900000.000		
	1000000.000		
	1250000.000		
	1500000.000		
	1750000.000		
	2000000.000		
	2500000.000		
	3000000.000		
	3750000.000		
	4500000.000		
	5000000.000		
	6000000.000		
	7500000.000		
	9000000.000		
	10000000.000		
	12500000.000		
	15000000.000		
	17500000.000		
	20000000.000		
	25000000.000		
	30000000.000		
	37500000.000		
	45000000.000		
	50000000.000		
	60000000.000		
	75000000.000		
	90000000.000		
	100000000.000		
	125000000.000		
	150000000.000		
	175000000.000		
	200000000.000		
	250000000.000		
	300000000.000		
	375000000.000		
	450000000.000		
	500000000.000		
	600000000.000		
	750000000.000		
	900000000.000		
	1000000000.000		
	1250000000.000		
	1500000000.000		
	1750000000.000		
	2000000000.000		
	2500000000.000		
	3000000000.000		
	3750000000.000		
	4500000000.000		
	5000000000.000		
	6000000000.000		
	7500000000.000		
	9000000000.000		
	10000000000.000		
	12500000000.000		
	15000000000.000		
	17500000000.000		
	20000000000.000		
	25000000000.000		
	30000000000.000		
	37500000000.000		
	45000000000.000		
	50000000000.000		
	60000000000.000		
	75000000000.000		
	90000000000.000		
	100000000000.000		
	125000000000.000		
	150000000000.000		
	175000000000.000		
	200000000000.000		
	250000000000.000		
	300000000000.000		
	375000000000.000		
	450000000000.000		
	500000000000.000		
	600000000000.000		
	750000000000.000		
	900000000000.000		
	1000000000000.000		
	1250000000000.000		
	1500000000000.000		
	1750000000000.000		
	2000000000000.000		
	2500000000000.000		
	3000000000000.000		
	3750000000000.000		
	4500000000000.000		
	5000000000000.000		
	6000000000000.000		
	7500000000000.000		
	9000000000000.000		
	10000000000000.000		
	12500000000000.000		
	15000000000000.000		
	17500000000000.000		
	20000000000000.000		
	25000000000000.000		
	30000000000000.000		
	37500000000000.000		
	45000000000000.000		
	50000000000000.000		
	60000000000000.000		
	75000000000000.000		
	90000000000000.000		
	100000000000000.000		
	125000000000000.000		
	150000000000000.000		
	175000000000000.000		
	200000000000000.000		
	250000000000000.000		
	300000000000000.000		
	375000000		